

NOTICE!!

These documents have been scanned!

Do not place un-scanned documents beneath this notice!

Do not remove this notice from this file!

GPO Jacket No. 560-102
Print Order 61540
Rise Business Services, LLC
Job=AZ15 6/24/2019



Box Number= AZ15128



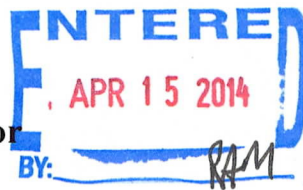
Claim Begin-End: AMC427718-AMC427725

1 Initial Receipt



AZ15128-24

AMC427444-AMC427733



United States Department of the Interior
Bureau of Land Management
 LANDS/RECREATION & PLANNING
 ONE N CENTRAL AVE
 PHOENIX, AZ 85004 -2203
 Phone: 602-417-9200

Receipt

No: 3005839

Transaction #: 3095528	
Date of Transaction: 04/08/2014	
CUSTOMER:	
LA CUESTA INTERNATIONAL INC. 3349 S STALLION DR KINGMAN, AZ 86401-8722 US	

LINE #	QTY	DESCRIPTION	REMARKS	UNIT PRICE	TOTAL
1	8.00	LOCATABLE MINERALS / MINING CLAIMS-NEW, UNADJUD, ONE OR MORE AUTH NOS / NEW MINING CLAIM LOCATION FEE \$34 CASES: AMC427718/\$34.00, AMC427719/\$34.00, AMC427720/\$34.00, AMC427721/\$34.00, AMC427722/\$34.00, AMC427723/\$34.00, AMC427724/\$34.00, AMC427725/\$34.00		- n/a -	272.00
2	8.00	LOCATABLE MINERALS / MINING CLAIMS-NEW, UNADJUD, ONE OR MORE AUTH NOS / NEW MINING CLAIM PROCESSING FEE CASES: AMC427718/\$20.00, AMC427719/\$20.00, AMC427720/\$20.00, AMC427721/\$20.00, AMC427722/\$20.00, AMC427723/\$20.00, AMC427724/\$20.00, AMC427725/\$20.00		- n/a -	160.00
3	8.00	LOCATABLE MINERALS / MINING CLAIMS-NEW, UNADJUD, ONE OR MORE AUTH NOS / NEW MINING CLAIM MAINT FEE \$140 CASES: AMC427718/\$140.00, AMC427719/\$140.00, AMC427720/\$140.00, AMC427721/\$140.00, AMC427722/\$140.00, AMC427723/\$140.00, AMC427724/\$140.00, AMC427725/\$140.00		- n/a -	1120.00
TOTAL:					\$1,552.00

PAYMENT INFORMATION				
1	AMOUNT:	1552.00	POSTMARKED:	04/04/2014
	TYPE:	CHECK	RECEIVED:	04/07/2014
	CHECK NO:	3880		
	NAME:	LA CUESTA INTERNATIONAL INC		

	3349 S STALLION DR KINGMAN AZ 86401-8722 US
--	--

REMARKS

This receipt was generated by the automated BLM Collections and Billing System and is a paper representation of a portion of the official electronic record contained therein.

NOTICE!!

These documents have been scanned!

Do not place un-scanned documents beneath this notice!

Do not remove this notice from this file!

GPO Jacket No. 560-102
Print Order 61540
Rise Business Services, LLC
Job=AZ15 6/24/2019



Box Number= AZ15128



Claim Begin-End: AMC427718-AMC427725

2 Correspondence



AZ15128-24

AMC427444-AMC427733

**NO
DOCUMENTS
FOUND**

NO DOCUMENTS FOUND
NO DOCUMENTS FOUND

NOTICE!!

These documents have been scanned!

Do not place un-scanned documents beneath this notice!

Do not remove this notice from this file!

GPO Jacket No. 560-102
Print Order 61540
Rise Business Services, LLC
Job=AZ15 6/24/2019



Box Number= AZ15128



Claim Begin-End: AMC427718-AMC427725

3 Transfers



AZ15128-24

AMC427444-AMC427733

**NO
DOCUMENTS
FOUND**

NO DOCUMENTS FOUND
NO DOCUMENTS FOUND

NOTICE!!

These documents have been scanned!

Do not place un-scanned documents beneath this notice!

Do not remove this notice from this file!

GPO Jacket No. 560-102
Print Order 61540
Rise Business Services, LLC
Job=AZ15 6/24/2019



Box Number= AZ15128



Claim Begin-End: AMC427718-AMC427725

4 Annual Filings



AZ15128-24

AMC427444-AMC427733

Lead File Numbers (maintenance fee payments – receipt number 4239449) Golden Vertex

AMC361998

AMC398978

AMC407863

AMC408939

AMC410214

AMC413137

AMC416914

AMC420117

AMC427718

AMC428270

AMC432054

AMC433744

AMC450547

AMC450693

AMC451761

GOLDEN VERTEX CORP

August 2, 2018

Bureau of Land Management
Mining Claims
One North Central Avenue, Suite 800
Phoenix, Arizona 85004-4427

RECEIVED
BLM AZ STATE OFFICE
2018 AUG 16 P 2:35
PHOENIX, ARIZONA

Hello -

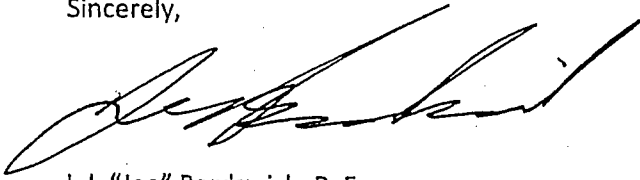
Enclosed is our check # in the amount of \$55,335 for fiscal year 2019 yearly maintenance fees for 357 lode claims in the name of Golden Vertex Corp at the rate of \$155 per claim.

Also enclosed is our check # in the amount of \$28,365 for fiscal year 2019 yearly maintenance fees for 183 lode claims in the name of La Cuesta International at the rate of \$155 per claim.

Listings of the two groups of claims are attached to each check.

Please don't hesitate to contact me at 928-234-5227 should you have any questions or need further information.


Sincerely,



L.J. "Joe" Bardswich, P. E.
President
Golden Vertex Corp.

Cc: File

4239449

ENTERED
AUG 28 2018
BY: 

	A	B	C
1	Date and Time Run:		
2	8/1/2018 2:05:43 PM		Page 1 of 1
3	DEPARTMENT OF THE INTERIOR		
4	BUREAU OF LAND MANAGEMENT		
5			
6	Mining Claims		
7	CUSTOMER INFORMATION		
8			
9	Admin State:	AZ	
10	Geo State:	AZ	
11	Claimant Name:	LA CUESTA INTERNATIONAL INC	
12	Address:	3349 S STALLION DR	
13	City:	KINGMAN	2354577
14	Serial Number	Lead Serial Number	Claim Name
15	AMC407863	AMC407863	SILVER CREEK 1
16	AMC407864	AMC407863	SILVER CREEK 2
17	AMC407865	AMC407863	SILVER CREEK 3
18	AMC407866	AMC407863	SILVER CREEK 4
19	AMC407867	AMC407863	SILVER CREEK 5
20			
21	AMC407868	AMC407863	SILVER CREEK 6
22			
23	AMC407869	AMC407863	SILVER CREEK 7
24	AMC407870	AMC407863	SILVER CREEK 8
25	AMC407871	AMC407863	SILVER CREEK 9
26	AMC407872	AMC407863	SILVER CREEK 10
27	AMC407873	AMC407863	SILVER CREEK 11
28	AMC407874	AMC407863	SILVER CREEK 12
29	AMC407875	AMC407863	SILVER CREEK 13
30	AMC407876	AMC407863	SILVER CREEK 14
31	AMC407877	AMC407863	SILVER CREEK 15
32	AMC407878	AMC407863	SILVER CREEK 16
33	AMC407879	AMC407863	SILVER CREEK 17
34	AMC407880	AMC407863	SILVER CREEK 18
35	AMC407881	AMC407863	SILVER CREEK 19
36	AMC407882	AMC407863	SILVER CREEK 20
37	AMC407883	AMC407863	SILVER CREEK 21
38	AMC407884	AMC407863	SILVER CREEK 22
39	AMC407893	AMC407863	SILVER CREEK 31
40			
41	AMC407894	AMC407863	SILVER CREEK 32
42	AMC407895	AMC407863	SILVER CREEK 33
43	AMC407896	AMC407863	SILVER CREEK 34

PHOENIX, ARIZONA

2018 AUG 16 P 2:35

RECEIVED
BLM AZ STATE OFFICE

	A	B	C
44			
45	AMC407897	AMC407863	SILVER CREEK 35
46	AMC407898	AMC407863	SILVER CREEK 36
47			
48	AMC407899	AMC407863	SILVER CREEK 37
49			
50	AMC407900	AMC407863	SILVER CREEK 38
51			
52			
53			
54	AMC407901	AMC407863	SILVER CREEK 39
55	AMC407902	AMC407863	SILVER CREEK 40
56			
57	AMC407903	AMC407863	SILVER CREEK 41
58	AMC407904	AMC407863	SILVER CREEK 42
59			
60	AMC407905	AMC407863	SILVER CREEK 43
61	AMC407906	AMC407863	SILVER CREEK 44
62			
63	AMC407907	AMC407863	SILVER CREEK 45
64	AMC407908	AMC407863	SILVER CREEK 46
65			
66	AMC407909	AMC407863	SILVER CREEK 47
67	AMC407910	AMC407863	SILVER CREEK 48
68			
69	AMC407911	AMC407863	SILVER CREEK 49
70	AMC407912	AMC407863	SILVER CREEK 50
71			
72	AMC407913	AMC407863	SILVER CREEK 51
73	AMC407914	AMC407863	SILVER CREEK 52
74			
75	AMC407915	AMC407863	SILVER CREEK 53
76	AMC407916 ✓	AMC407863	SILVER CREEK 54
77			
78	AMC407925 ✓	AMC407863	SILVER CREEK 63
79			
80	AMC407926	AMC407863	SILVER CREEK 64
81			
82	AMC407927	AMC407863	SILVER CREEK 65
83	AMC407928	AMC407863	SILVER CREEK 66
84	AMC407929	AMC407863	SILVER CREEK 67
85	AMC407930	AMC407863	SILVER CREEK 68
86	AMC407931	AMC407863	SILVER CREEK 69
87	AMC407932	AMC407863	SILVER CREEK 70
88	AMC407933	AMC407863	SILVER CREEK 71
89	AMC407934	AMC407863	SILVER CREEK 72

PHOENIX, ARIZONA

2010 AUG 16 P 2:30

RECEIVED
BLM AZ STATE OFFICE

	A	B	C
90	AMC407935	AMC407863	SILVER CREEK 73
91	AMC407936	AMC407863	SILVER CREEK 74
92	AMC407937	AMC407863	SILVER CREEK 75
93	AMC407938	AMC407863	SILVER CREEK 76
94	AMC407939	AMC407863	SILVER CREEK 77
95	AMC407940	AMC407863	SILVER CREEK 78
96	AMC407941	AMC407863	SILVER CREEK 79
97	AMC407942	AMC407863	SILVER CREEK 80
98	AMC407943	AMC407863	SILVER CREEK 81
99			
100	AMC407944	AMC407863	SILVER CREEK 82
101			
102	AMC407945	AMC407863	SILVER CREEK 83
103	AMC407946	AMC407863	SILVER CREEK 84
104	AMC407947	AMC407863	SILVER CREEK 85
105	AMC407948	AMC407863	SILVER CREEK 86
106	AMC407949	AMC407863	SILVER CREEK 87
107			
108	AMC407950	AMC407863	SILVER CREEK 88
109			
110	AMC407951	AMC407863	SILVER CREEK 89
111			
112	AMC407952	AMC407863	SILVER CREEK 90
113			
114	AMC407953	AMC407863	SILVER CREEK 91
115			
116	AMC407954	AMC407863	SILVER CREEK 92
117	AMC407955	AMC407863	SILVER CREEK 93
118	AMC407956	AMC407863	SILVER CREEK 94
119			
120	AMC407957	AMC407863	SILVER CREEK 95
121	AMC407958	AMC407863	SILVER CREEK 96
122	AMC407959	AMC407863	SILVER CREEK 97
123	AMC407970	AMC407863	SILVER CREEK 108
124	AMC407971	AMC407863	SILVER CREEK 109
125			
126	AMC407972	AMC407863	SILVER CREEK 110
127	AMC407973	AMC407863	SILVER CREEK 111
128	AMC407974	AMC407863	SILVER CREEK 112
129	AMC407975	AMC407863	SILVER CREEK 113
130	AMC407976	AMC407863	SILVER CREEK 114
131			
132	AMC407977	AMC407863	SILVER CREEK 115
133	AMC410214	AMC410214	SILVER CREEK 116
134			
135	AMC410215	AMC410214	SILVER CREEK 117

PHOENIX, ARIZONA

RECEIVED
 BLM AZ STATE OFFICE
 2018 AUG 16 P 2:36

	A	B	C
136			
137	AMC410216	AMC410214	SILVER CREEK 118
138	AMC410217	AMC410214	SILVER CREEK 119
139	AMC410218	AMC410214	SILVER CREEK 120
140	AMC410219	AMC410214	SILVER CREEK 121
141	AMC410220	AMC410214	SILVER CREEK 122
142			
143	AMC410221	AMC410214	SILVER CREEK 123
144			
145	AMC410222	AMC410214	SILVER CREEK 124
146	AMC410223	AMC410214	SILVER CREEK 125
147	AMC410224	AMC410214	SILVER CREEK 126
148	AMC410225	AMC410214	SILVER CREEK 127
149	AMC410226	AMC410214	SILVER CREEK 128
150	AMC410227	AMC410214	SILVER CREEK 129
151	AMC410228	AMC410214	SILVER CREEK 130
152	AMC410229	AMC410214	SILVER CREEK 131
153	AMC410230	AMC410214	SILVER CREEK 132
154	AMC410231	AMC410214	SILVER CREEK 133
155	AMC410232	AMC410214	SILVER CREEK 134
156	AMC410233	AMC410214	SILVER CREEK 135
157			
158	AMC410234	AMC410214	SILVER CREEK 136
159	AMC410235	AMC410214	SILVER CREEK 137
160			
161	AMC410236	AMC410214	SILVER CREEK 138
162	AMC410237	AMC410214	SILVER CREEK 139
163			
164	AMC410238	AMC410214	SILVER CREEK 140
165	AMC410239	AMC410214	SILVER CREEK 141
166			
167	AMC410240	AMC410214	SILVER CREEK 142
168	AMC410241	AMC410214	SILVER CREEK 143
169			
170	AMC410242	AMC410214	SILVER CREEK 144
171	AMC410243	AMC410214	SILVER CREEK 145
172			
173	AMC410244	AMC410214	SILVER CREEK 146
174	AMC410245	AMC410214	SILVER CREEK 147
175			
176	AMC410246	AMC410214	SILVER CREEK 148
177	AMC410247	AMC410214	SILVER CREEK 149
178			
179	AMC410248	AMC410214	SILVER CREEK 150
180	AMC410249	AMC410214	SILVER CREEK 151
181			

PHOENIX, ARIZONA

2018 AUG 16 P 2:36

RECEIVED
BLM AZ STATE OFFICE

	A	B	C
182	AMC410250	AMC410214	SILVER CREEK 152
183			
184	AMC410251	AMC410214	SILVER CREEK 153
185			
186			
187			
188	AMC410252	AMC410214	SILVER CREEK 154
189	AMC410253	AMC410214	SILVER CREEK 155
190			
191	AMC410254	AMC410214	SILVER CREEK 156
192			
193	AMC410255	AMC410214	SILVER CREEK 157
194	AMC410256	AMC410214	SILVER CREEK 158
195	AMC410257	AMC410214	SILVER CREEK 159
196	AMC410258	AMC410214	SILVER CREEK 160
197	AMC410259	AMC410214	SILVER CREEK 161
198	AMC410260	AMC410214	SILVER CREEK 162
199	AMC410261	AMC410214	SILVER CREEK 163
200	AMC410262	AMC410214	SILVER CREEK 164
201	AMC410263	AMC410214	SILVER CREEK 165
202	AMC410264	AMC410214	SILVER CREEK 166
203	AMC410265	AMC410214	SILVER CREEK 167
204			
205	AMC410266	AMC410214	SILVER CREEK 168
206			
207	AMC410267	AMC410214	SILVER CREEK 169
208	AMC410268	AMC410214	SILVER CREEK 170
209	AMC410269	AMC410214	SILVER CREEK 171
210	AMC410270	AMC410214	SILVER CREEK 172
211	AMC410271	AMC410214	SILVER CREEK 173
212	AMC410272	AMC410214	SILVER CREEK 174
213	AMC410273	AMC410214	SILVER CREEK 175
214	AMC410274	AMC410214	SILVER CREEK 176
215	AMC410275	AMC410214	SILVER CREEK 177
216			
217	AMC410276	AMC410214	SILVER CREEK 178
218			
219	AMC410277	AMC410214	SILVER CREEK 179
220			
221			
222			
223	AMC410278	AMC410214	SILVER CREEK 180
224			
225	AMC410279	AMC410214	SILVER CREEK 181
226			
227	AMC410280	AMC410214	SILVER CREEK 182

PHOENIX, ARIZONA

RECEIVED
 BLM AT STATE OFFICE
 2018 AUG 16 P 2:36

	A	B	C
228			
229	AMC410281	AMC410214	SILVER CREEK 183
230			
231	AMC410282	AMC410214	SILVER CREEK 184
232	AMC413137	AMC413137	SILVER CREEK 185
233			
234			
235			
236	AMC413138	AMC413137	SILVER CREEK 186
237			
238	AMC413139	AMC413137	SILVER CREEK 187
239			
240	AMC413140	AMC413137	SILVER CREEK 188
241			
242	AMC413141	AMC413137	SILVER CREEK 189
243			
244	AMC413142	AMC413137	SILVER CREEK 190
245			
246	AMC413143	AMC413137	SILVER CREEK 191
247			
248	AMC413144	AMC413137	SILVER CREEK 192
249			
250	AMC413145	AMC413137	SILVER CREEK 193
251			
252			
253			
254	AMC427718	AMC427718	SILVER CREEK 194
255	AMC427719	AMC427718	SILVER CREEK 195
256	AMC427720	AMC427718	SILVER CREEK 196
257	AMC427721	AMC427718	SILVER CREEK 197
258	AMC427722	AMC427718	SILVER CREEK 198
259	AMC427723	AMC427718	SILVER CREEK 199
260	AMC427724	AMC427718	SILVER CREEK 200
261	AMC427725	AMC427718	SILVER CREEK 201
262	AMC428270	AMC428270	SILVER CREEK 202
263	AMC428271	AMC428270	SILVER CREEK 203
264	AMC428272	AMC428270	SILVER CREEK 204
265	AMC428273	AMC428270	SILVER CREEK 205
266			
267	AMC428274	AMC428270	SILVER CREEK 206
268	AMC428275	AMC428270	SILVER CREEK 207
269			
270	AMC428276	AMC428270	SILVER CREEK 208
271	AMC428277	AMC428270	SILVER CREEK 209
272			

PHOENIX, ARIZONA

2018 AUG 16 P 2:36

RECEIVED
BLM AZ STATE OFFICE

	A	B	C
1	Admin State:	AZ	
2	Geo State:	AZ	
3	Claimant Name:	GOLDEN VERTEX CORP	
4	Address:	2440 ADOBE RD STE 101	
5	City:	BULLHEAD CITY	2317154
6			
7	Serial Number	Claim Name	Lead Serial Number
8			
9	AMC361998	MOSS 11	AMC361998
10	AMC361999	MOSS 12	AMC361998
11	AMC362000	MOSS 13	AMC361998
12	AMC362001	MOSS 14	AMC361998
13	AMC362002	MOSS 15	AMC361998
14	AMC362003	MOSS 16	AMC361998
15	AMC362004	MOSS 17	AMC361998
16	AMC362005	MOSS 18	AMC361998
17	AMC362006	MOSS 19	AMC361998
18	AMC362007	MOSS 20	AMC361998
19	AMC362008	MOSS 21	AMC361998
20	AMC362009	MOSS 22	AMC361998
21	AMC362010	MOSS 23	AMC361998
22	AMC362011	MOSS 24	AMC361998
23	AMC362012	MOSS 25	AMC361998
24	AMC362013	MOSS 26	AMC361998
25	AMC362014	MOSS 27	AMC361998
26	AMC362015	MOSS 28	AMC361998
27	AMC362016	MOSS 29	AMC361998
28	AMC362017	MOSS 30	AMC361998
29	AMC362018	MOSS 31	AMC361998
30	AMC362019	MOSS 32	AMC361998
31	AMC362022	MOSS 34	AMC361998
32	AMC362023	MOSS 35	AMC361998
33	AMC362024	MOSS 36	AMC361998
34	AMC362025	MOSS 37	AMC361998
35	AMC362026	MOSS 38	AMC361998
36	AMC362027	MOSS 39	AMC361998
37	AMC362028	MOSS 39F	AMC361998
38	AMC362029	MOSS 40	AMC361998
39	AMC362030	MOSS 41	AMC361998
40	AMC362031	MOSS 42	AMC361998
41	AMC362032	MOSS 43	AMC361998
42	AMC362033	MOSS 44	AMC361998
43	AMC362034	MOSS 45	AMC361998
44	AMC362035	MOSS 46	AMC361998
45	AMC362036	MOSS 47	AMC361998

PHOENIX, ARIZONA

2018 AUG 16 P 2:36

RECEIVED
BLM AZ STATE OFFICE

	A	B	C
46	AMC362037	MOSS 47B	AMC361998
47	AMC362038	MOSS 48	AMC361998
48	AMC362039	MOSS 49	AMC361998
49	AMC362040	MOSS 50	AMC361998
50	AMC362041	MOSS 51	AMC361998
51	AMC362042	MOSS 52	AMC361998
52	AMC362043	MOSS 53	AMC361998
53	AMC362044	MOSS 54	AMC361998
54	AMC362045	MOSS 55	AMC361998
55	AMC362046	MOSS 56	AMC361998
56	AMC362047	MOSS 57	AMC361998
57	AMC362048	MOSS 58	AMC361998
58	AMC362049	MOSS 59	AMC361998
59	AMC362050	MOSS 60	AMC361998
60	AMC362051	MOSS 61	AMC361998
61	AMC362052	MOSS 62	AMC361998
62	AMC362053	MOSS 63	AMC361998
63	AMC362054	MOSS 64	AMC361998
64	AMC362055	MOSS 65	AMC361998
65	AMC362056	MOSS 66	AMC361998
66	AMC362057	MOSS 67	AMC361998
67	AMC362058	MOSS 68	AMC361998
68	AMC362059	MOSS 69	AMC361998
69	AMC362060	MOSS 70	AMC361998
70	AMC398978	MOSS 1	AMC398978
71	AMC398979	MOSS 2	AMC398978
72	AMC398980	MOSS 3	AMC398978
73	AMC398981	MOSS 4	AMC398978
74	AMC398982	MOSS 5	AMC398978
75	AMC398983	MOSS 6	AMC398978
76	AMC398984	MOSS 7	AMC398978
77	AMC398985	MOSS 8	AMC398978
78	AMC398986	MOSS 9	AMC398978
79	AMC398987	MOSS 10	AMC398978
80	AMC398988	MOSS 118	AMC398978
81	AMC398989	MOSS 119	AMC398978
82	AMC398990	MOSS 120	AMC398978
83	AMC398991	MOSS 121	AMC398978
84	AMC398992	MOSS 122	AMC398978
85	AMC398993	MOSS 123	AMC398978
86	AMC398994	MOSS 124	AMC398978
87	AMC398995	MOSS 125	AMC398978
88	AMC398996	MOSS 126	AMC398978
89	AMC398997	MOSS 127	AMC398978
90	AMC398998	MOSS 128	AMC398978
91	AMC398999	MOSS 129	AMC398978

PHOENIX, ARIZONA

2018 AUG 16 P 2:36

RECEIVED
BLM AZ STATE OFFICE

	A	B	C
92	AMC399000	MOSS 130	AMC398978
93	AMC399001	MOSS 131	AMC398978
94	AMC399002	MOSS 132	AMC398978
95	AMC399003	MOSS 133	AMC398978
96	AMC399004	MOSS 134	AMC398978
97	AMC399005	MOSS 135	AMC398978
98	AMC399006	MOSS 136	AMC398978
99	AMC399007	MOSS 137	AMC398978
100	AMC399008	MOSS 138	AMC398978
101	AMC399009	MOSS 139	AMC398978
102	AMC399010	MOSS 140	AMC398978
103	AMC399011	MOSS 141	AMC398978
104	AMC399012	MOSS 142	AMC398978
105	AMC399013	MOSS 143	AMC398978
106	AMC399014	MOSS 144	AMC398978
107	AMC399015	MOSS 145	AMC398978
108	AMC399016	MOSS 146	AMC398978
109	AMC399017	MOSS 147	AMC398978
110	AMC399018	MOSS 148	AMC398978
111	AMC408939	GVC 1	AMC408939
112	AMC408940	GVC 2	AMC408939
113	AMC408941	GVC 3	AMC408939
114	AMC408942	GVC 4	AMC408939
115	AMC408943	GVC 5	AMC408939
116	AMC408944	GVC 6	AMC408939
117	AMC408945	GVC 7	AMC408939
118	AMC408946	GVC 8	AMC408939
119	AMC408947	GVC 9	AMC408939
120	AMC408948	GVC 10	AMC408939
121	AMC408949	GVC 11	AMC408939
122	AMC408950	GVC 12	AMC408939
123	AMC408951	GVC 13	AMC408939
124	AMC408952	GVC 14	AMC408939
125	AMC408953	GVC 15	AMC408939
126	AMC408954	GVC 16	AMC408939
127	AMC408955	GVC 17	AMC408939
128	AMC408956	GVC 18	AMC408939
129	AMC408957	GVC 19	AMC408939
130	AMC408958	GVC 20	AMC408939
131	AMC408959	GVC 21	AMC408939
132	AMC408960	GVC 22	AMC408939
133	AMC408961	GVC 23	AMC408939
134	AMC408962	GVC 24	AMC408939
135	AMC408963	GVC 25	AMC408939
136	AMC408964	GVC 26	AMC408939
137	AMC408965	GVC 27	AMC408939

RECEIVED
BLM AZ STATE OFFICE
2018 AUG 16 P 2:36
PHOENIX, ARIZONA

	A	B	C
138	AMC408966	GVC 28	AMC408939
139	AMC408967	GVC 29	AMC408939
140	AMC408968	GVC 30	AMC408939
141	AMC408969	GVC 31	AMC408939
142	AMC408971	GVC 33	AMC408939
143	AMC408972	GVC 34	AMC408939
144	AMC408973	GVC 35	AMC408939
145	AMC408974	GVC 36	AMC408939
146	AMC408975	GVC 37	AMC408939
147	AMC408976	GVC 38	AMC408939
148	AMC408977	GVC 39	AMC408939
149	AMC408978	GVC 40	AMC408939
150	AMC408979	GVC 41	AMC408939
151	AMC408980	GVC 42	AMC408939
152	AMC408981	GVC 43	AMC408939
153	AMC408982	GVC 44	AMC408939
154	AMC408983	GVC 45	AMC408939
155	AMC408984	GVC 46	AMC408939
156	AMC408985	GVC 47	AMC408939
157	AMC408986	GVC 48	AMC408939
158	AMC408987	GVC 49	AMC408939
159	AMC408988	GVC 50	AMC408939
160	AMC408989	GVC 51	AMC408939
161	AMC408990	GVC 52	AMC408939
162	AMC408991	GVC 53	AMC408939
163	AMC408992	GVC 54	AMC408939
164	AMC408993	GVC 55	AMC408939
165	AMC408994	GVC 56	AMC408939
166	AMC408995	GVC 57	AMC408939
167	AMC408996	GVC 58	AMC408939
168	AMC408997	GVC 59	AMC408939
169	AMC408998	GVC 60	AMC408939
170	AMC408999	GVC 61	AMC408939
171	AMC409000	GVC 62	AMC408939
172	AMC409001	GVC 63	AMC408939
173	AMC409002	GVC 64	AMC408939
174	AMC409003	GVC 65	AMC408939
175	AMC409004	GVC 67	AMC408939
176	AMC409005	GVC 68	AMC408939
177	AMC409006	GVC 69	AMC408939
178	AMC409007	GVC 70	AMC408939
179	AMC409008	GVC 71	AMC408939
180	AMC409009	GVC 72	AMC408939
181	AMC409010	GVC 73	AMC408939
182	AMC409011	GVC 74	AMC408939
183	AMC409012	GVC 75	AMC408939

RECEIVED
 PLM AZ STATE OFFICE
 2018 AUG 16 P 2:31
 PHOENIX, ARIZONA

	A	B	C
184	AMC409013	GVC 76	AMC408939
185	AMC409014	GVC 77	AMC408939
186	AMC409015	GVC 78	AMC408939
187	AMC409016	GVC 79	AMC408939
188	AMC409017	GVC 80	AMC408939
189	AMC409018	GVC 81	AMC408939
190	AMC409019	GVC 82	AMC408939
191	AMC409020	GVC 83	AMC408939
192	AMC409021	GVC 84	AMC408939
193	AMC409022	GVC 85	AMC408939
194	AMC409023	GVC 86	AMC408939
195	AMC409024	GVC 87	AMC408939
196	AMC409025	GVC 88	AMC408939
197	AMC409026	GVC 89	AMC408939
198	AMC409027	GVC 90	AMC408939
199	AMC409028	GVC 91	AMC408939
200	AMC409029	GVC 92	AMC408939
201	AMC409030	GVC 93	AMC408939
202	AMC409031	GVC 94	AMC408939
203	AMC409032	GVC 95	AMC408939
204	AMC409033	GVC 96	AMC408939
205	AMC409034	GVC 97	AMC408939
206	AMC409035	GVC 98	AMC408939
207	AMC409036	GVC 99	AMC408939
208	AMC409037	GVC 100	AMC408939
209	AMC409038	GVC 101	AMC408939
210	AMC409039	GVC 102	AMC408939
211	AMC409040	GVC 103	AMC408939
212	AMC409041	GVC 104	AMC408939
213	AMC409042	GVC 105	AMC408939
214	AMC409043	GVC 106	AMC408939
215	AMC409044	GVC 107	AMC408939
216	AMC409045	GVC 108	AMC408939
217	AMC409046	GVC 109	AMC408939
218	AMC409047	GVC 110	AMC408939
219	AMC409048	GVC 111	AMC408939
220	AMC409049	GVC 112	AMC408939
221	AMC409050	GVC 113	AMC408939
222	AMC409051	GVC 114	AMC408939
223	AMC409052	GVC 115	AMC408939
224	AMC409053	GVC 116	AMC408939
225	AMC409054	GVC 117	AMC408939
226	AMC409055	GVC 118	AMC408939
227	AMC409056	GVC 119	AMC408939
228	AMC409057	GVC 120	AMC408939
229	AMC409058	GVC 121	AMC408939

PHOENIX, ARIZONA

2018 AUG 16 P 2:37

RECEIVED
BLM AZ STATE OFFICE

	A	B	C
230	AMC409059	GVC 122	AMC408939
231	AMC409060	GVC 123	AMC408939
232	AMC409061	GVC 124	AMC408939
233	AMC409062	GVC 125	AMC408939
234	AMC409063	GVC 126	AMC408939
235	AMC409064	GVC 127	AMC408939
236	AMC409065	GVC 128	AMC408939
237	AMC409066	GVC 129	AMC408939
238	AMC409067	GVC 130	AMC408939
239	AMC409068	GVC 131	AMC408939
240	AMC409069	GVC 132	AMC408939
241	AMC409070	GVC 133	AMC408939
242	AMC409071	GVC 134	AMC408939
243	AMC409072	GVC 135	AMC408939
244	AMC409073	GVC 136	AMC408939
245	AMC409074	GVC 137	AMC408939
246	AMC409075	GVC 138	AMC408939
247	AMC409076	GVC 139	AMC408939
248	AMC409085	GVC 149	AMC408939
249	AMC409086	GVC 150	AMC408939
250	AMC409091	GVC 162	AMC408939
251	AMC409093	GVC 164	AMC408939
252	AMC409094	GVC 165	AMC408939
253	AMC409095	GVC 166	AMC408939
254	AMC409096	GVC 167	AMC408939
255	AMC409097	GVC 168	AMC408939
256	AMC409101	GVC 172	AMC408939
257	AMC409102	GVC 173	AMC408939
258	AMC409103	GVC 174	AMC408939
259	AMC409104	GVC 175	AMC408939
260	AMC409105	GVC 176	AMC408939
261	AMC409106	GVC 177	AMC408939
262	AMC409107	GVC 178	AMC408939
263	AMC409108	GVC 179	AMC408939
264	AMC409109	GVC 180	AMC408939
265	AMC409110	GVC 181	AMC408939
266	AMC409111	GVC 182	AMC408939
267	AMC409112	GVC 183	AMC408939
268	AMC409113	GVC 184	AMC408939
269	AMC409114	GVC 185	AMC408939
270	AMC409115	GVC 186	AMC408939
271	AMC409116	GVC 187	AMC408939
272	AMC409117	GVC 188	AMC408939
273	AMC409118	GVC 189	AMC408939
274	AMC409119	GVC 190	AMC408939
275	AMC409120	GVC 191	AMC408939

PHOENIX, ARIZONA

2018 AUG 16 P 2:37

RECEIVED
BLM AT STATE OFFICE

	A	B	C
276	AMC409121	GVC 192	AMC408939
277	AMC409122	GVC 193	AMC408939
278	AMC416914	MOSS 201	AMC416914
279	AMC416915	MOSS 202	AMC416914
280	AMC416916	MOSS 203	AMC416914
281	AMC416917	MOSS 204	AMC416914
282	AMC416918	MOSS 205	AMC416914
283	AMC416919	MOSS 206	AMC416914
284	AMC416920	MOSS 207	AMC416914
285	AMC416921	MOSS 208	AMC416914
286	AMC416922	MOSS 209	AMC416914
287	AMC420117	MOSS 210	AMC420117
288	AMC420118	MOSS 211	AMC420117
289	AMC432054	GVC 301	AMC432054
290	AMC433744	MOSS 33X	AMC433744
291	AMC450547	GVC 452	AMC450547
292	AMC450548	GVC 453	AMC450547
293	AMC450549	GVC 454	AMC450547
294	AMC450550	GVC 456	AMC450547
295	AMC450551	GVC 457	AMC450547
296	AMC450552	GVC 458	AMC450547
297	AMC450553	GVC 459	AMC450547
298	AMC450554	GVC 460	AMC450547
299	AMC450555	GVC 461	AMC450547
300	AMC450556	GVC 462	AMC450547
301	AMC450557	GVC 463	AMC450547
302	AMC450558	GVC 464	AMC450547
303	AMC450559	GVC 465	AMC450547
304	AMC450560	GVC 466	AMC450547
305	AMC450561	GVC 467	AMC450547
306	AMC450562	GVC 468	AMC450547
307	AMC450693	GVC 415	AMC450693
308	AMC450694	GVC 416	AMC450693
309	AMC450695	GVC 417	AMC450693
310	AMC450696	GVC 418	AMC450693
311	AMC450697	GVC 419	AMC450693
312	AMC450698	GVC 420	AMC450693
313	AMC450699	GVC 421	AMC450693
314	AMC450700	GVC 422	AMC450693
315	AMC450701	GVC 423	AMC450693
316	AMC450702	GVC 424	AMC450693
317	AMC450703	GVC 425	AMC450693
318	AMC450704	GVC 426	AMC450693
319	AMC450705	GVC 427	AMC450693
320	AMC450706	GVC 428	AMC450693
321	AMC450707	GVC 429	AMC450693

PHOENIX, ARIZONA

2010 AUG 16 P 2:37

RECEIVED
BLM AT STATE OFFICE

	A	B	C
322	AMC450708	GVC 430	AMC450693
323	AMC450709	GVC 431	AMC450693
324	AMC450710	GVC 432	AMC450693
325	AMC450711	GVC 433	AMC450693
326	AMC450712	GVC 434	AMC450693
327	AMC450713	GVC 435	AMC450693
328	AMC450714	GVC 436	AMC450693
329	AMC450715	GVC 437	AMC450693
330	AMC450716	GVC 438	AMC450693
331	AMC450717	GVC 439	AMC450693
332	AMC450718	GVC 440	AMC450693
333	AMC450719	GVC 441	AMC450693
334	AMC450720	GVC 442	AMC450693
335	AMC450721	GVC 443	AMC450693
336	AMC450722	GVC 444	AMC450693
337	AMC450723	GVC 445	AMC450693
338	AMC450724	GVC 446	AMC450693
339	AMC450725	GVC 447	AMC450693
340	AMC450726	GVC 448	AMC450693
341	AMC450727	GVC 449	AMC450693
342	AMC450728	GVC 450	AMC450693
343	AMC450729	GVC 451	AMC450693
344	AMC450730	GVC 469	AMC450693
345	AMC450731	GVC 470	AMC450693
346	AMC450732	GVC 471	AMC450693
347	AMC450733	GVC 472	AMC450693
348	AMC450734	GVC 473	AMC450693
349	AMC450735	GVC 474	AMC450693
350	AMC450736	GVC 475	AMC450693
351	AMC450737	GVC 476	AMC450693
352	AMC451761	GVC 302	AMC451761
353	AMC451762	GVC 303	AMC451761
354	AMC451763	GVC 304	AMC451761
355	AMC451764	GVC 305	AMC451761
356	AMC451765	GVC 306	AMC451761
357	AMC451766	GVC 307	AMC451761
358	AMC451767	GVC 308	AMC451761
359	AMC451768	GVC 309	AMC451761
360	AMC451769	GVC 310	AMC451761
361	AMC451770	GVC 311	AMC451761
362	AMC451771	GVC 312	AMC451761
363	AMC451772	GVC 313	AMC451761
364	AMC451773	GVC 314	AMC451761
365	AMC451774	GVC 315	AMC451761
366			
367			

PHOENIX, ARIZONA

2018 AUG 16 P 2:37

RECEIVED
BLM AZ STATE OFFICE

	A	B	C
368			

RECEIVED
BLM AT STATE OFFICE

2018 AUG 16 P 2:37

PHOENIX, ARIZONA

FedEx® Express

ORIGIN ID: JFPA (928) 783-6252
JOE BARDSWICH
GOLDEN VERTEX CORP
2440 ADOBE ROAD
SUITE 101
BUHLHEAD CITY, AZ 85042
UNITED STATES US

SHIP DATE: 14-AUG-18
ACTWGT: 1.00 LB
CAD: 110401431/NET4:340

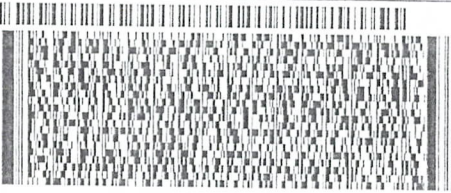
BILL SENDER

TO MINING CLAIMS
BUREAU OF LAND MANAGEMENT
ONE NORTH CENTRAL AVE
SUITE 800
PHOENIX AZ 85004

992110000046

(802) 417-9334 REF BLM
NY
PC

DEPT



RECEIVED
BLM AZ STATE OFFICE
2018 AUG 16 P 2:35
PHOENIX, ARIZONA

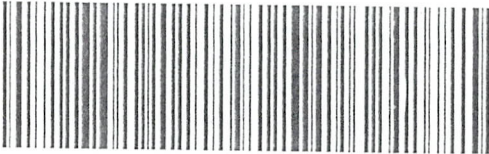
THU - 16 AUG 4:30P

** 2DAY **

TRK# 7729 7630 1540
0201

SH ZSYA

85004
AZ-US PHX



15:30
08:15

16:30

08:16

15:40

D

7

RT 277
ST 28.2

ely Urgent

United States Department of the Interior
Bureau of Land Management
 DIV OF LANDS, MINRLS & ENERGY
 ONE N CENTRAL AVE
 PHOENIX, AZ 85004 -4427
 Phone: 602-417-9200

Receipt

No: 4239449

Transaction #: 4354847	
Date of Transaction: 08/20/2018	
CUSTOMER:	
GOLDEN VERTEX CORP 2440 ADOBE RD STE 101 BULLHEAD CITY, AZ 86442-4485 US	

LINE #	QTY	DESCRIPTION	REMARKS	UNIT PRICE	TOTAL
1	1.00	LOCATABLE MINERALS / MINING CLAIMS- NOT NEW-UNADJUD, ONE AUTH NO. ONLY / MINING CLAIM MONEY RECEIVED CASES: AMC407863/\$83700.00	MAINT 2019/504 <i>540</i>	- n/a -	83700.00
TOTAL:					\$83,700.00

PAYMENT INFORMATION			
1	AMOUNT:	55335.00	POSTMARKED: N/A
	TYPE:	CHECK	RECEIVED: 08/16/2018
	CHECK NO:	6448	
	NAME:	GOLDEN VERTEX CORP 2440 ADOBE RD STE 101 BULLHEAD CITY AZ 86442-4485 US	
2	AMOUNT:	28365.00	POSTMARKED: N/A
	TYPE:	CHECK	RECEIVED: 08/16/2018
	CHECK NO:	6449	
	NAME:	GOLDEN VERTEX CORP 2440 ADOBE RD STE 101 BULLHEAD CITY AZ 86442-4485 US	

REMARKS

9

361998
398978
408939

VERTEX - MOHAVE COUNTY CLAIMS

433744
407863

Admin State: AZ
Geo State: AZ
GOLDEN VERTEX CORP

CUSTOMER ID: 2317154 2440 ADOBE RD STE

101
"BULLHEAD CITY, AZ 86442-4486"
Serial No. Claim Name/Number

416914
420117
432054

Serial No Claim Name/Number Mc Lead Case Ser Nr Disposition

AMC361998	MOSS 11	AMC361998	ACTIVE
AMC361999	MOSS 12	AMC361998	ACTIVE
AMC362000	MOSS 13	AMC361998	ACTIVE
AMC362001	MOSS 14	AMC361998	ACTIVE
AMC362002	MOSS 15	AMC361998	ACTIVE
AMC362003	MOSS 16	AMC361998	ACTIVE
AMC362004	MOSS 17	AMC361998	ACTIVE
AMC362005	MOSS 18	AMC361998	ACTIVE
AMC362006	MOSS 19	AMC361998	ACTIVE
AMC362007	MOSS 20	AMC361998	ACTIVE
AMC362008	MOSS 21	AMC361998	ACTIVE
AMC362009	MOSS 22	AMC361998	ACTIVE
AMC362010	MOSS 23	AMC361998	ACTIVE
AMC362011	MOSS 24	AMC361998	ACTIVE
AMC362012	MOSS 25	AMC361998	ACTIVE
AMC362013	MOSS 26	AMC361998	ACTIVE
AMC362014	MOSS 27	AMC361998	ACTIVE
AMC362015	MOSS 28	AMC361998	ACTIVE
AMC362016	MOSS 29	AMC361998	ACTIVE
AMC362017	MOSS 30	AMC361998	ACTIVE
AMC362018	MOSS 31	AMC361998	ACTIVE
AMC362019	MOSS 32	AMC361998	ACTIVE
AMC362022	MOSS 34	AMC361998	ACTIVE
AMC362023	MOSS 35	AMC361998	ACTIVE
AMC362024	MOSS 36	AMC361998	ACTIVE
AMC362025	MOSS 37	AMC361998	ACTIVE
AMC362026	MOSS 38	AMC361998	ACTIVE
AMC362027	MOSS 39	AMC361998	ACTIVE
AMC362028	MOSS 39F	AMC361998	ACTIVE
AMC362029	MOSS 40	AMC361998	ACTIVE
AMC362030	MOSS 41	AMC361998	ACTIVE
AMC362031	MOSS 42	AMC361998	ACTIVE
AMC362032	MOSS 43	AMC361998	ACTIVE
AMC362033	MOSS 44	AMC361998	ACTIVE
AMC362034	MOSS 45	AMC361998	ACTIVE
AMC362035	MOSS 46	AMC361998	ACTIVE
AMC362036	MOSS 47	AMC361998	ACTIVE
AMC362037	MOSS 47B	AMC361998	ACTIVE
AMC362038	MOSS 48	AMC361998	ACTIVE
AMC362039	MOSS 49	AMC361998	ACTIVE
AMC362040	MOSS 50	AMC361998	ACTIVE
AMC362041	MOSS 51	AMC361998	ACTIVE
AMC362042	MOSS 52	AMC361998	ACTIVE
AMC362043	MOSS 53	AMC361998	ACTIVE
AMC362044	MOSS 54	AMC361998	ACTIVE
AMC362045	MOSS 55	AMC361998	ACTIVE
AMC362046	MOSS 56	AMC361998	ACTIVE
AMC362047	MOSS 57	AMC361998	ACTIVE
AMC362048	MOSS 58	AMC361998	ACTIVE
AMC362049	MOSS 59	AMC361998	ACTIVE
AMC362050	MOSS 60	AMC361998	ACTIVE
AMC362051	MOSS 61	AMC361998	ACTIVE
AMC362052	MOSS 62	AMC361998	ACTIVE

410214
413137
427718
428270

RECEIVED
FLM AZ STATE OFFICE
2011 AUG 24 P 2:49
PHOENIX, ARIZONA

AT 9/6/17 # 3960166

VERTEX - MOHAVE COUNTY CLAIMS

AMC362053	MOSS 63	AMC361998	ACTIVE
AMC362054	MOSS 64	AMC361998	ACTIVE
AMC362055	MOSS 65	AMC361998	ACTIVE
AMC362056	MOSS 66	AMC361998	ACTIVE
AMC362057	MOSS 67	AMC361998	ACTIVE
AMC362058	MOSS 68	AMC361998	ACTIVE
AMC362059	MOSS 69	AMC361998	ACTIVE
AMC362060	MOSS 70	AMC361998	ACTIVE
AMC398978	MOSS 1	AMC398978	ACTIVE
AMC398979	MOSS 2	AMC398978	ACTIVE
AMC398980	MOSS 3	AMC398978	ACTIVE
AMC398981	MOSS 4	AMC398978	ACTIVE
AMC398982	MOSS 5	AMC398978	ACTIVE
AMC398983	MOSS 6	AMC398978	ACTIVE
AMC398984	MOSS 7	AMC398978	ACTIVE
AMC398985	MOSS 8	AMC398978	ACTIVE
AMC398986	MOSS 9	AMC398978	ACTIVE
AMC398987	MOSS 10	AMC398978	ACTIVE
AMC398988	MOSS 118	AMC398978	ACTIVE
AMC398989	MOSS 119	AMC398978	ACTIVE
AMC398990	MOSS 120	AMC398978	ACTIVE
AMC398991	MOSS 121	AMC398978	ACTIVE
AMC398992	MOSS 122	AMC398978	ACTIVE
AMC398993	MOSS 123	AMC398978	ACTIVE
AMC398994	MOSS 124	AMC398978	ACTIVE
AMC398995	MOSS 125	AMC398978	ACTIVE
AMC398996	MOSS 126	AMC398978	ACTIVE
AMC398997	MOSS 127	AMC398978	ACTIVE
AMC398998	MOSS 128	AMC398978	ACTIVE
AMC398999	MOSS 129	AMC398978	ACTIVE
AMC399000	MOSS 130	AMC398978	ACTIVE
AMC399001	MOSS 131	AMC398978	ACTIVE
AMC399002	MOSS 132	AMC398978	ACTIVE
AMC399003	MOSS 133	AMC398978	ACTIVE
AMC399004	MOSS 134	AMC398978	ACTIVE
AMC399005	MOSS 135	AMC398978	ACTIVE
AMC399006	MOSS 136	AMC398978	ACTIVE
AMC399007	MOSS 137	AMC398978	ACTIVE
AMC399008	MOSS 138	AMC398978	ACTIVE
AMC399009	MOSS 139	AMC398978	ACTIVE
AMC399010	MOSS 140	AMC398978	ACTIVE
AMC399011	MOSS 141	AMC398978	ACTIVE
AMC399012	MOSS 142	AMC398978	ACTIVE
AMC399013	MOSS 143	AMC398978	ACTIVE
AMC399014	MOSS 144	AMC398978	ACTIVE
AMC399015	MOSS 145	AMC398978	ACTIVE
AMC399016	MOSS 146	AMC398978	ACTIVE
AMC399017	MOSS 147	AMC398978	ACTIVE
AMC399018	MOSS 148	AMC398978	ACTIVE
AMC408939	GVC 1	AMC408939	ACTIVE
AMC408940	GVC 2	AMC408939	ACTIVE
AMC408941	GVC 3	AMC408939	ACTIVE
AMC408942	GVC 4	AMC408939	ACTIVE
AMC408943	GVC 5	AMC408939	ACTIVE
AMC408944	GVC 6	AMC408939	ACTIVE
AMC408945	GVC 7	AMC408939	ACTIVE
AMC408946	GVC 8	AMC408939	ACTIVE
AMC408947	GVC 9	AMC408939	ACTIVE
AMC408948	GVC 10	AMC408939	ACTIVE
AMC408949	GVC 11	AMC408939	ACTIVE
AMC408950	GVC 12	AMC408939	ACTIVE
AMC408951	GVC 13	AMC408939	ACTIVE
AMC408952	GVC 14	AMC408939	ACTIVE

RECEIVED
 BLM AZ STATE OFFICE
 2011 AUG 24 P 2:49
 PHOENIX, ARIZONA

VERTEX - MOHAVE COUNTY CLAIMS

AMC408953	GVC 15	AMC408939	ACTIVE
AMC408954	GVC 16	AMC408939	ACTIVE
AMC408955	GVC 17	AMC408939	ACTIVE
AMC408956	GVC 18	AMC408939	ACTIVE
AMC408957	GVC 19	AMC408939	ACTIVE
AMC408958	GVC 20	AMC408939	ACTIVE
AMC408959	GVC 21	AMC408939	ACTIVE
AMC408960	GVC 22	AMC408939	ACTIVE
AMC408961	GVC 23	AMC408939	ACTIVE
AMC408962	GVC 24	AMC408939	ACTIVE
AMC408963	GVC 25	AMC408939	ACTIVE
AMC408964	GVC 26	AMC408939	ACTIVE
AMC408965	GVC 27	AMC408939	ACTIVE
AMC408966	GVC 28	AMC408939	ACTIVE
AMC408967	GVC 29	AMC408939	ACTIVE
AMC408968	GVC 30	AMC408939	ACTIVE
AMC408969	GVC 31	AMC408939	ACTIVE
AMC408971	GVC 33	AMC408939	ACTIVE
AMC408972	GVC 34	AMC408939	ACTIVE
AMC408973	GVC 35	AMC408939	ACTIVE
AMC408974	GVC 36	AMC408939	ACTIVE
AMC408975	GVC 37	AMC408939	ACTIVE
AMC408976	GVC 38	AMC408939	ACTIVE
AMC408977	GVC 39	AMC408939	ACTIVE
AMC408978	GVC 40	AMC408939	ACTIVE
AMC408979	GVC 41	AMC408939	ACTIVE
AMC408980	GVC 42	AMC408939	ACTIVE
AMC408981	GVC 43	AMC408939	ACTIVE
AMC408982	GVC 44	AMC408939	ACTIVE
AMC408983	GVC 45	AMC408939	ACTIVE
AMC408984	GVC 46	AMC408939	ACTIVE
AMC408985	GVC 47	AMC408939	ACTIVE
AMC408986	GVC 48	AMC408939	ACTIVE
AMC408987	GVC 49	AMC408939	ACTIVE
AMC408988	GVC 50	AMC408939	ACTIVE
AMC408989	GVC 51	AMC408939	ACTIVE
AMC408990	GVC 52	AMC408939	ACTIVE
AMC408991	GVC 53	AMC408939	ACTIVE
AMC408992	GVC 54	AMC408939	ACTIVE
AMC408993	GVC 55	AMC408939	ACTIVE
AMC408994	GVC 56	AMC408939	ACTIVE
AMC408995	GVC 57	AMC408939	ACTIVE
AMC408996	GVC 58	AMC408939	ACTIVE
AMC408997	GVC 59	AMC408939	ACTIVE
AMC408998	GVC 60	AMC408939	ACTIVE
AMC408999	GVC 61	AMC408939	ACTIVE
AMC409000	GVC 62	AMC408939	ACTIVE
AMC409001	GVC 63	AMC408939	ACTIVE
AMC409002	GVC 64	AMC408939	ACTIVE
AMC409003	GVC 65	AMC408939	ACTIVE
AMC409004	GVC 67	AMC408939	ACTIVE
AMC409005	GVC 68	AMC408939	ACTIVE
AMC409006	GVC 69	AMC408939	ACTIVE
AMC409007	GVC 70	AMC408939	ACTIVE
AMC409008	GVC 71	AMC408939	ACTIVE
AMC409009	GVC 72	AMC408939	ACTIVE
AMC409010	GVC 73	AMC408939	ACTIVE
AMC409011	GVC 74	AMC408939	ACTIVE
AMC409012	GVC 75	AMC408939	ACTIVE
AMC409013	GVC 76	AMC408939	ACTIVE
AMC409014	GVC 77	AMC408939	ACTIVE
AMC409015	GVC 78	AMC408939	ACTIVE
AMC409016	GVC 79	AMC408939	ACTIVE

RECEIVED
 DLH AZ STATE OFFICE
 2011 AUG 24 P 2:49
 PHOENIX, ARIZONA

VERTEX - MOHAVE COUNTY CLAIMS

AMC409017	GVC 80	AMC408939	ACTIVE
AMC409018	GVC 81	AMC408939	ACTIVE
AMC409019	GVC 82	AMC408939	ACTIVE
AMC409020	GVC 83	AMC408939	ACTIVE
AMC409021	GVC 84	AMC408939	ACTIVE
AMC409022	GVC 85	AMC408939	ACTIVE
AMC409023	GVC 86	AMC408939	ACTIVE
AMC409024	GVC 87	AMC408939	ACTIVE
AMC409025	GVC 88	AMC408939	ACTIVE
AMC409026	GVC 89	AMC408939	ACTIVE
AMC409027	GVC 90	AMC408939	ACTIVE
AMC409028	GVC 91	AMC408939	ACTIVE
AMC409029	GVC 92	AMC408939	ACTIVE
AMC409030	GVC 93	AMC408939	ACTIVE
AMC409031	GVC 94	AMC408939	ACTIVE
AMC409032	GVC 95	AMC408939	ACTIVE
AMC409033	GVC 96	AMC408939	ACTIVE
AMC409034	GVC 97	AMC408939	ACTIVE
AMC409035	GVC 98	AMC408939	ACTIVE
AMC409036	GVC 99	AMC408939	ACTIVE
AMC409037	GVC 100	AMC408939	ACTIVE
AMC409038	GVC 101	AMC408939	ACTIVE
AMC409039	GVC 102	AMC408939	ACTIVE
AMC409040	GVC 103	AMC408939	ACTIVE
AMC409041	GVC 104	AMC408939	ACTIVE
AMC409042	GVC 105	AMC408939	ACTIVE
AMC409043	GVC 106	AMC408939	ACTIVE
AMC409044	GVC 107	AMC408939	ACTIVE
AMC409045	GVC 108	AMC408939	ACTIVE
AMC409046	GVC 109	AMC408939	ACTIVE
AMC409047	GVC 110	AMC408939	ACTIVE
AMC409048	GVC 111	AMC408939	ACTIVE
AMC409049	GVC 112	AMC408939	ACTIVE
AMC409050	GVC 113	AMC408939	ACTIVE
AMC409051	GVC 114	AMC408939	ACTIVE
AMC409052	GVC 115	AMC408939	ACTIVE
AMC409053	GVC 116	AMC408939	ACTIVE
AMC409054	GVC 117	AMC408939	ACTIVE
AMC409055	GVC 118	AMC408939	ACTIVE
AMC409056	GVC 119	AMC408939	ACTIVE
AMC409057	GVC 120	AMC408939	ACTIVE
AMC409058	GVC 121	AMC408939	ACTIVE
AMC409059	GVC 122	AMC408939	ACTIVE
AMC409060	GVC 123	AMC408939	ACTIVE
AMC409061	GVC 124	AMC408939	ACTIVE
AMC409062	GVC 125	AMC408939	ACTIVE
AMC409063	GVC 126	AMC408939	ACTIVE
AMC409064	GVC 127	AMC408939	ACTIVE
AMC409065	GVC 128	AMC408939	ACTIVE
AMC409066	GVC 129	AMC408939	ACTIVE
AMC409067	GVC 130	AMC408939	ACTIVE
AMC409068	GVC 131	AMC408939	ACTIVE
AMC409069	GVC 132	AMC408939	ACTIVE
AMC409070	GVC 133	AMC408939	ACTIVE
AMC409071	GVC 134	AMC408939	ACTIVE
AMC409072	GVC 135	AMC408939	ACTIVE
AMC409073	GVC 136	AMC408939	ACTIVE
AMC409074	GVC 137	AMC408939	ACTIVE
AMC409075	GVC 138	AMC408939	ACTIVE
AMC409076	GVC 139	AMC408939	ACTIVE
AMC409085	GVC 149	AMC408939	ACTIVE
AMC409086	GVC 150	AMC408939	ACTIVE
AMC409091	GVC 162	AMC408939	ACTIVE

RECEIVED
BLM AZ STATE OFFICE
2011 AUG 24 P 2 49
PHOENIX, ARIZONA

VERTEX - MOHAVE COUNTY CLAIMS

AMC409093	GVC 164	AMC408939	ACTIVE
AMC409094	GVC 165	AMC408939	ACTIVE
AMC409095	GVC 166	AMC408939	ACTIVE
AMC409096	GVC 167	AMC408939	ACTIVE
AMC409097	GVC 168	AMC408939	ACTIVE
AMC409101	GVC 172	AMC408939	ACTIVE
AMC409102	GVC 173	AMC408939	ACTIVE
AMC409103	GVC 174	AMC408939	ACTIVE
AMC409104	GVC 175	AMC408939	ACTIVE
AMC409105	GVC 176	AMC408939	ACTIVE
AMC409106	GVC 177	AMC408939	ACTIVE
AMC409107	GVC 178	AMC408939	ACTIVE
AMC409108	GVC 179	AMC408939	ACTIVE
AMC409109	GVC 180	AMC408939	ACTIVE
AMC409110	GVC 181	AMC408939	ACTIVE
AMC409111	GVC 182	AMC408939	ACTIVE
AMC409112	GVC 183	AMC408939	ACTIVE
AMC409113	GVC 184	AMC408939	ACTIVE
AMC409114	GVC 185	AMC408939	ACTIVE
AMC409115	GVC 186	AMC408939	ACTIVE
AMC409116	GVC 187	AMC408939	ACTIVE
AMC409117	GVC 188	AMC408939	ACTIVE
AMC409118	GVC 189	AMC408939	ACTIVE
AMC409119	GVC 190	AMC408939	ACTIVE
AMC409120	GVC 191	AMC408939	ACTIVE
AMC409121	GVC 192	AMC408939	ACTIVE
AMC409122	GVC 193	AMC408939	ACTIVE
AMC416914	MOSS 201	AMC416914	ACTIVE
AMC416915	MOSS 202	AMC416914	ACTIVE
AMC416916	MOSS 203	AMC416914	ACTIVE
AMC416917	MOSS 204	AMC416914	ACTIVE
AMC416918	MOSS 205	AMC416914	ACTIVE
AMC416919	MOSS 206	AMC416914	ACTIVE
AMC416920	MOSS 207	AMC416914	ACTIVE
AMC416921	MOSS 208	AMC416914	ACTIVE
AMC416922	MOSS 209	AMC416914	ACTIVE
AMC420117	MOSS 210	AMC420117	ACTIVE
AMC420118	MOSS 211	AMC420117	ACTIVE
AMC432054	GVC 301	AMC432054	ACTIVE
AMC433744	MOSS 33X	AMC433744	ACTIVE

282 155 43710

CLAIMS \$155 PER CL. "\$43,710.00 "

RECEIVED
 BLM AZ STATE OFFICE
 2017 AUG 24 P 2:49
 PHOENIX, ARIZONA

VERTEX - MOHAVE COUNTY CLAIMS

TextLabel
Number of ACTIVE cases: 282

RECEIVED
BLM AZ STATE OFFICE
2011 AUG 24 P 2 20
PHOENIX, ARIZONA

LA CUESTA - SILVER CREEK CLAIMS - VERTEX

LA CUESTA INTERNATIONAL INC

CUSTOMER ID: 2354577

3349 S STALLION DR

"KINGMAN, AZ 86401-8722"

Serial No. Claim Name/Number Lead Serial No. Disposition

Serial No Claim Name/Number Mc Lead Case Ser Nr Disposition

AMC407863	SILVER CREEK 1	AMC407863	ACTIVE
AMC407864	SILVER CREEK 2	AMC407863	ACTIVE
AMC407865	SILVER CREEK 3	AMC407863	ACTIVE
AMC407866	SILVER CREEK 4	AMC407863	ACTIVE
AMC407867	SILVER CREEK 5	AMC407863	ACTIVE
AMC407868	SILVER CREEK 6	AMC407863	ACTIVE
AMC407869	SILVER CREEK 7	AMC407863	ACTIVE
AMC407870	SILVER CREEK 8	AMC407863	ACTIVE
AMC407871	SILVER CREEK 9	AMC407863	ACTIVE
AMC407872	SILVER CREEK 10	AMC407863	ACTIVE
AMC407873	SILVER CREEK 11	AMC407863	ACTIVE
AMC407874	SILVER CREEK 12	AMC407863	ACTIVE
AMC407875	SILVER CREEK 13	AMC407863	ACTIVE
AMC407876	SILVER CREEK 14	AMC407863	ACTIVE
AMC407877	SILVER CREEK 15	AMC407863	ACTIVE
AMC407878	SILVER CREEK 16	AMC407863	ACTIVE
AMC407879	SILVER CREEK 17	AMC407863	ACTIVE
AMC407880	SILVER CREEK 18	AMC407863	ACTIVE
AMC407881	SILVER CREEK 19	AMC407863	ACTIVE
AMC407882	SILVER CREEK 20	AMC407863	ACTIVE
AMC407883	SILVER CREEK 21	AMC407863	ACTIVE
AMC407884	SILVER CREEK 22	AMC407863	ACTIVE
AMC407893	SILVER CREEK 31	AMC407863	ACTIVE
AMC407894	SILVER CREEK 32	AMC407863	ACTIVE
AMC407895	SILVER CREEK 33	AMC407863	ACTIVE
AMC407896	SILVER CREEK 34	AMC407863	ACTIVE
AMC407897	SILVER CREEK 35	AMC407863	ACTIVE
AMC407898	SILVER CREEK 36	AMC407863	ACTIVE
AMC407899	SILVER CREEK 37	AMC407863	ACTIVE
AMC407900	SILVER CREEK 38	AMC407863	ACTIVE
AMC407901	SILVER CREEK 39	AMC407863	ACTIVE
AMC407902	SILVER CREEK 40	AMC407863	ACTIVE
AMC407903	SILVER CREEK 41	AMC407863	ACTIVE
AMC407904	SILVER CREEK 42	AMC407863	ACTIVE
AMC407905	SILVER CREEK 43	AMC407863	ACTIVE
AMC407906	SILVER CREEK 44	AMC407863	ACTIVE
AMC407907	SILVER CREEK 45	AMC407863	ACTIVE
AMC407908	SILVER CREEK 46	AMC407863	ACTIVE
AMC407909	SILVER CREEK 47	AMC407863	ACTIVE
AMC407910	SILVER CREEK 48	AMC407863	ACTIVE
AMC407911	SILVER CREEK 49	AMC407863	ACTIVE
AMC407912	SILVER CREEK 50	AMC407863	ACTIVE
AMC407913	SILVER CREEK 51	AMC407863	ACTIVE
AMC407914	SILVER CREEK 52	AMC407863	ACTIVE
AMC407915	SILVER CREEK 53	AMC407863	ACTIVE
AMC407916	SILVER CREEK 54	AMC407863	ACTIVE
AMC407925	SILVER CREEK 63	AMC407863	ACTIVE
AMC407926	SILVER CREEK 64	AMC407863	ACTIVE
AMC407927	SILVER CREEK 65	AMC407863	ACTIVE
AMC407928	SILVER CREEK 66	AMC407863	ACTIVE
AMC407929	SILVER CREEK 67	AMC407863	ACTIVE
AMC407930	SILVER CREEK 68	AMC407863	ACTIVE
AMC407931	SILVER CREEK 69	AMC407863	ACTIVE
AMC407932	SILVER CREEK 70	AMC407863	ACTIVE
AMC407933	SILVER CREEK 71	AMC407863	ACTIVE
AMC407934	SILVER CREEK 72	AMC407863	ACTIVE

RECEIVED
BLM AZ STATE OFFICE
2011 AUG 24 P 2:49
PHOENIX, ARIZONA

LA CUESTA - SILVER CREEK CLAIMS - VERTEX

AMC407935	SILVER CREEK 73	AMC407863	ACTIVE
AMC407936	SILVER CREEK 74	AMC407863	ACTIVE
AMC407937	SILVER CREEK 75	AMC407863	ACTIVE
AMC407938	SILVER CREEK 76	AMC407863	ACTIVE
AMC407939	SILVER CREEK 77	AMC407863	ACTIVE
AMC407940	SILVER CREEK 78	AMC407863	ACTIVE
AMC407941	SILVER CREEK 79	AMC407863	ACTIVE
AMC407942	SILVER CREEK 80	AMC407863	ACTIVE
AMC407943	SILVER CREEK 81	AMC407863	ACTIVE
AMC407944	SILVER CREEK 82	AMC407863	ACTIVE
AMC407945	SILVER CREEK 83	AMC407863	ACTIVE
AMC407946	SILVER CREEK 84	AMC407863	ACTIVE
AMC407947	SILVER CREEK 85	AMC407863	ACTIVE
AMC407948	SILVER CREEK 86	AMC407863	ACTIVE
AMC407949	SILVER CREEK 87	AMC407863	ACTIVE
AMC407950	SILVER CREEK 88	AMC407863	ACTIVE
AMC407951	SILVER CREEK 89	AMC407863	ACTIVE
AMC407952	SILVER CREEK 90	AMC407863	ACTIVE
AMC407953	SILVER CREEK 91	AMC407863	ACTIVE
AMC407954	SILVER CREEK 92	AMC407863	ACTIVE
AMC407955	SILVER CREEK 93	AMC407863	ACTIVE
AMC407956	SILVER CREEK 94	AMC407863	ACTIVE
AMC407957	SILVER CREEK 95	AMC407863	ACTIVE
AMC407958	SILVER CREEK 96	AMC407863	ACTIVE
AMC407959	SILVER CREEK 97	AMC407863	ACTIVE
AMC407970	SILVER CREEK 108	AMC407863	ACTIVE
AMC407971	SILVER CREEK 109	AMC407863	ACTIVE
AMC407972	SILVER CREEK 110	AMC407863	ACTIVE
AMC407973	SILVER CREEK 111	AMC407863	ACTIVE
AMC407974	SILVER CREEK 112	AMC407863	ACTIVE
AMC407975	SILVER CREEK 113	AMC407863	ACTIVE
AMC407976	SILVER CREEK 114	AMC407863	ACTIVE
AMC407977	SILVER CREEK 115	AMC407863	ACTIVE
AMC410214	SILVER CREEK 116	AMC410214	ACTIVE
AMC410215	SILVER CREEK 117	AMC410214	ACTIVE
AMC410216	SILVER CREEK 118	AMC410214	ACTIVE
AMC410217	SILVER CREEK 119	AMC410214	ACTIVE
AMC410218	SILVER CREEK 120	AMC410214	ACTIVE
AMC410219	SILVER CREEK 121	AMC410214	ACTIVE
AMC410220	SILVER CREEK 122	AMC410214	ACTIVE
AMC410221	SILVER CREEK 123	AMC410214	ACTIVE
AMC410222	SILVER CREEK 124	AMC410214	ACTIVE
AMC410223	SILVER CREEK 125	AMC410214	ACTIVE
AMC410224	SILVER CREEK 126	AMC410214	ACTIVE
AMC410225	SILVER CREEK 127	AMC410214	ACTIVE
AMC410226	SILVER CREEK 128	AMC410214	ACTIVE
AMC410227	SILVER CREEK 129	AMC410214	ACTIVE
AMC410228	SILVER CREEK 130	AMC410214	ACTIVE
AMC410229	SILVER CREEK 131	AMC410214	ACTIVE
AMC410230	SILVER CREEK 132	AMC410214	ACTIVE
AMC410231	SILVER CREEK 133	AMC410214	ACTIVE
AMC410232	SILVER CREEK 134	AMC410214	ACTIVE
AMC410233	SILVER CREEK 135	AMC410214	ACTIVE
AMC410234	SILVER CREEK 136	AMC410214	ACTIVE
AMC410235	SILVER CREEK 137	AMC410214	ACTIVE
AMC410236	SILVER CREEK 138	AMC410214	ACTIVE
AMC410237	SILVER CREEK 139	AMC410214	ACTIVE
AMC410238	SILVER CREEK 140	AMC410214	ACTIVE
AMC410239	SILVER CREEK 141	AMC410214	ACTIVE
AMC410240	SILVER CREEK 142	AMC410214	ACTIVE
AMC410241	SILVER CREEK 143	AMC410214	ACTIVE
AMC410242	SILVER CREEK 144	AMC410214	ACTIVE
AMC410243	SILVER CREEK 145	AMC410214	ACTIVE

RECEIVED
 BLM AZ STATE OFFICE
 2017 AUG 24 P 2:49
 PHOENIX, ARIZONA

LA CUESTA - SILVER CREEK CLAIMS - VERTEX

AMC410244	SILVER CREEK 146	AMC410214	ACTIVE
AMC410245	SILVER CREEK 147	AMC410214	ACTIVE
AMC410246	SILVER CREEK 148	AMC410214	ACTIVE
AMC410247	SILVER CREEK 149	AMC410214	ACTIVE
AMC410248	SILVER CREEK 150	AMC410214	ACTIVE
AMC410249	SILVER CREEK 151	AMC410214	ACTIVE
AMC410250	SILVER CREEK 152	AMC410214	ACTIVE
AMC410251	SILVER CREEK 153	AMC410214	ACTIVE
AMC410252	SILVER CREEK 154	AMC410214	ACTIVE
AMC410253	SILVER CREEK 155	AMC410214	ACTIVE
AMC410254	SILVER CREEK 156	AMC410214	ACTIVE
AMC410255	SILVER CREEK 157	AMC410214	ACTIVE
AMC410256	SILVER CREEK 158	AMC410214	ACTIVE
AMC410257	SILVER CREEK 159	AMC410214	ACTIVE
AMC410258	SILVER CREEK 160	AMC410214	ACTIVE
AMC410259	SILVER CREEK 161	AMC410214	ACTIVE
AMC410260	SILVER CREEK 162	AMC410214	ACTIVE
AMC410261	SILVER CREEK 163	AMC410214	ACTIVE
AMC410262	SILVER CREEK 164	AMC410214	ACTIVE
AMC410263	SILVER CREEK 165	AMC410214	ACTIVE
AMC410264	SILVER CREEK 166	AMC410214	ACTIVE
AMC410265	SILVER CREEK 167	AMC410214	ACTIVE
AMC410266	SILVER CREEK 168	AMC410214	ACTIVE
AMC410267	SILVER CREEK 169	AMC410214	ACTIVE
AMC410268	SILVER CREEK 170	AMC410214	ACTIVE
AMC410269	SILVER CREEK 171	AMC410214	ACTIVE
AMC410270	SILVER CREEK 172	AMC410214	ACTIVE
AMC410271	SILVER CREEK 173	AMC410214	ACTIVE
AMC410272	SILVER CREEK 174	AMC410214	ACTIVE
AMC410273	SILVER CREEK 175	AMC410214	ACTIVE
AMC410274	SILVER CREEK 176	AMC410214	ACTIVE
AMC410275	SILVER CREEK 177	AMC410214	ACTIVE
AMC410276	SILVER CREEK 178	AMC410214	ACTIVE
AMC410277	SILVER CREEK 179	AMC410214	ACTIVE
AMC410278	SILVER CREEK 180	AMC410214	ACTIVE
AMC410279	SILVER CREEK 181	AMC410214	ACTIVE
AMC410280	SILVER CREEK 182	AMC410214	ACTIVE
AMC410281	SILVER CREEK 183	AMC410214	ACTIVE
AMC410282	SILVER CREEK 184	AMC410214	ACTIVE
AMC413137	SILVER CREEK 185	AMC413137	ACTIVE
AMC413138	SILVER CREEK 186	AMC413137	ACTIVE
AMC413139	SILVER CREEK 187	AMC413137	ACTIVE
AMC413140	SILVER CREEK 188	AMC413137	ACTIVE
AMC413141	SILVER CREEK 189	AMC413137	ACTIVE
AMC413142	SILVER CREEK 190	AMC413137	ACTIVE
AMC413143	SILVER CREEK 191	AMC413137	ACTIVE
AMC413144	SILVER CREEK 192	AMC413137	ACTIVE
AMC413145	SILVER CREEK 193	AMC413137	ACTIVE
AMC427718	SILVER CREEK 194	AMC427718	ACTIVE
AMC427719	SILVER CREEK 195	AMC427718	ACTIVE
AMC427720	SILVER CREEK 196	AMC427718	ACTIVE
AMC427721	SILVER CREEK 197	AMC427718	ACTIVE
AMC427722	SILVER CREEK 198	AMC427718	ACTIVE
AMC427723	SILVER CREEK 199	AMC427718	ACTIVE
AMC427724	SILVER CREEK 200	AMC427718	ACTIVE
AMC427725	SILVER CREEK 201	AMC427718	ACTIVE
AMC428270	SILVER CREEK 202	AMC428270	ACTIVE
AMC428271	SILVER CREEK 203	AMC428270	ACTIVE
AMC428272	SILVER CREEK 204	AMC428270	ACTIVE
AMC428273	SILVER CREEK 205	AMC428270	ACTIVE
AMC428274	SILVER CREEK 206	AMC428270	ACTIVE
AMC428275	SILVER CREEK 207	AMC428270	ACTIVE
AMC428276	SILVER CREEK 208	AMC428270	ACTIVE

RECEIVED
BLM AZ STATE OFFICE
2011 AUG 24 P 2:49
PHOENIX, ARIZONA

AMC428277 LA CUESTA - SILVER CREEK CLAIMS - VERTEX
 SILVER CREEK 209 AMC428270 ACTIVE

TOTAL 183 155 28365
 183 CLAIMS \$155 PER CLAIM "\$28,365.00 "

TextLabel

TextLabel
Number of ACTIVE cases: 183

RECEIVED
BLM AZ STATE OFFICE
2011 AUG 24 P 2 49
PHOENIX, ARIZONA

GOLDEN VERTEX CORP

August 23, 2017

Bureau of Land Management
Mining Claims
One North Central Avenue, Suite 800
Phoenix, Arizona 85004-4427

RECEIVED
BLM AZ STATE OFFICE
2017 AUG 24 P 2:48
PHOENIX, ARIZONA

Hello -

Enclosed is our check # 6149 in the amount of \$43,710 for fiscal 2018 yearly maintenance fees for 282 lode claims in the name of Golden Vertex Corp at the rate of \$155 per claim.

Also enclosed is our check #6148 in the amount of \$28,365 for fiscal 2018 yearly maintenance fees for 183 lode claims in the name of La Cuesta International at the rate of \$155 per claim.

Listings of the two groups of claims are attached to each check.

Please don't hesitate to contact me should you have any questions or need further information.

CELL 928-234 5227

Sincerely,



L.J. "Joe" Bardswich, P. E.
President
Golden Vertex Corp.

Cc: File

RECEIVED
BLM AZ STATE OFFICE
2017 AUG 24 P 241
PHOENIX, ARIZONA



ORIGIN ID: EPA (928) 763 6252
JOE BARDSWICH
GOLDEN VERTEX
244 ADAMS ROAD
SUITE 101
BULLHEAD CITY, AZ 85442
UNITED STATES US

SHIP DATE: 23AUG17
ACTWGT: 0.50 LB
CAD: 11040451/NET3920
BILL SENDER

TO ARIZONA STATE OFFICE
BUREAU OF LAND MANAGEMENT
1 NORTH CENTRAL AVENUE
SUITE 800
PHOENIX AZ 85004

(602) 417-9200



THU - 24 AUG 10:30A
PRIORITY OVERNIGHT

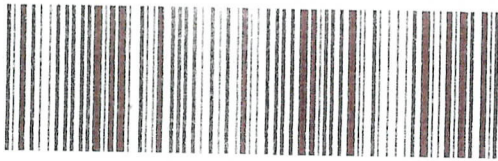
TRK# 0201 7700 9739 0586

FedEx
TRK# 0201 7700 9739 0586

THU - 24 AUG 10:30A
PRIORITY OVERNIGHT

XH ZSYA

85004
AZ-US
PHX



FTD 448382 23AUG17 11PA 546C1/577E/8C8A

Warning: Use only the printed original label for shipping. Using a photocopy of this label for shipping purposes is fraudulent and could result in additional billing. Use of this system constitutes your agreement to the terms conditions in the current FedEx Service Guide, available on FedEx.com. FedEx will not be responsible for loss or damage to contents, whether the reason is due to an error in the shipping process or a delay in delivery, unless you declare a higher value, pay an additional charge for insurance, or purchase a higher level of service. Your right to recover from FedEx for any loss, including intrinsic value, is limited to the declared value. Recoverable losses include items of extraordinary value up to \$1,000, e.g. jewelry, precious metals, negotiable instruments and other items listed in our ServiceGuide. With the exception of items of extraordinary value, the maximum amount of loss for items of ordinary value is \$1,000. For more information, see current FedEx Service Guide.

Extremely Urgent

s Only
th the
our
vable
the
ditions
press
tact

Insert shipping document here.

United States Department of the Interior
Bureau of Land Management
 DIV OF LANDS, MINRLS & ENERGY
 ONE N CENTRAL AVE
 PHOENIX, AZ 85004 -4427
 Phone: 602-417-9200

Receipt

No: 3960166

Transaction #: 4069985	
Date of Transaction: 08/25/2017	
CUSTOMER:	
GOLDEN VERTEX CORP 2440 ADOBE RD STE 101 BULLHEAD CITY, AZ 86442-4485 US	

LINE #	QTY	DESCRIPTION	REMARKS	UNIT PRICE	TOTAL
1	1.00	LOCATABLE MINERALS / MINING CLAIMS- NOT NEW-UNADJUD, ONE AUTH NO. ONLY / MINING CLAIM MONEY RECEIVED CASES: AMC361998/\$72075.00	MAINT 2018/465	- n/a -	72075.00
TOTAL:					\$72,075.00

PAYMENT INFORMATION					
1	AMOUNT:	28365.00	POSTMARKED:	08/23/2017	
	TYPE:	CHECK	RECEIVED:	08/24/2017	
	CHECK NO:	6148			
	NAME:	GOLDEN VERTEX CORP 2440 ADOBE RD STE 101 BULLHEAD CITY AZ 86442-4485 US			
2	AMOUNT:	43710.00	POSTMARKED:	08/23/2017	
	TYPE:	CHECK	RECEIVED:	08/24/2017	
	CHECK NO:	6149			
	NAME:	GOLDEN VERTEX CORP 2440 ADOBE RD STE 101 BULLHEAD CITY AZ 86442-4485 US			

This receipt was generated by the automated BLM Collections and Billing System and is a paper representation of a portion

DEPARTMENT OF THE INTERIOR
BUREAU OF LAND MANAGEMENT
MINING CLAIMS

Customer Information - WITH Serial No. and Claim Name

ACTIVE CLAIMS

407863
410214
413137

Admin State: AZ
Geo State: AZ

A CUESTA INTERNATIONAL INC
1349 S STALLION DR
KINGMAN, AZ 86401-8722

RECEIPT # 3635100

427718
428270

CUSTOMER ID: 2354577

<u>Serial No.</u>	<u>Claim Name/Number</u>	<u>Lead Serial No.</u>	<u>Disposition</u>
AMC407863	SILVER CREEK 1	AMC407863	ACTIVE
AMC407864	SILVER CREEK 2	AMC407863	ACTIVE
AMC407865	SILVER CREEK 3	AMC407863	ACTIVE
AMC407866	SILVER CREEK 4	AMC407863	ACTIVE
AMC407867	SILVER CREEK 5	AMC407863	ACTIVE
AMC407868	SILVER CREEK 6	AMC407863	ACTIVE
AMC407869	SILVER CREEK 7	AMC407863	ACTIVE
AMC407870	SILVER CREEK 8	AMC407863	ACTIVE
AMC407871	SILVER CREEK 9	AMC407863	ACTIVE
AMC407872	SILVER CREEK 10	AMC407863	ACTIVE
AMC407873	SILVER CREEK 11	AMC407863	ACTIVE
AMC407874	SILVER CREEK 12	AMC407863	ACTIVE
AMC407875	SILVER CREEK 13	AMC407863	ACTIVE
AMC407876	SILVER CREEK 14	AMC407863	ACTIVE
AMC407877	SILVER CREEK 15	AMC407863	ACTIVE
AMC407878	SILVER CREEK 16	AMC407863	ACTIVE
AMC407879	SILVER CREEK 17	AMC407863	ACTIVE
AMC407880	SILVER CREEK 18	AMC407863	ACTIVE
AMC407881	SILVER CREEK 19	AMC407863	ACTIVE
AMC407882	SILVER CREEK 20	AMC407863	ACTIVE
AMC407883	SILVER CREEK 21	AMC407863	ACTIVE
AMC407884	SILVER CREEK 22	AMC407863	ACTIVE
AMC407893	SILVER CREEK 31	AMC407863	ACTIVE
AMC407894	SILVER CREEK 32	AMC407863	ACTIVE
AMC407895	SILVER CREEK 33	AMC407863	ACTIVE
AMC407896	SILVER CREEK 34	AMC407863	ACTIVE
AMC407897	SILVER CREEK 35	AMC407863	ACTIVE
AMC407898	SILVER CREEK 36	AMC407863	ACTIVE
AMC407899	SILVER CREEK 37	AMC407863	ACTIVE
AMC407900	SILVER CREEK 38	AMC407863	ACTIVE
AMC407901	SILVER CREEK 39	AMC407863	ACTIVE
AMC407902	SILVER CREEK 40	AMC407863	ACTIVE
AMC407903	SILVER CREEK 41	AMC407863	ACTIVE
AMC407904	SILVER CREEK 42	AMC407863	ACTIVE
AMC407905	SILVER CREEK 43	AMC407863	ACTIVE
AMC407906	SILVER CREEK 44	AMC407863	ACTIVE
AMC407907	SILVER CREEK 45	AMC407863	ACTIVE
AMC407908	SILVER CREEK 46	AMC407863	ACTIVE
AMC407909	SILVER CREEK 47	AMC407863	ACTIVE
AMC407910	SILVER CREEK 48	AMC407863	ACTIVE
AMC407911	SILVER CREEK 49	AMC407863	ACTIVE
AMC407912	SILVER CREEK 50	AMC407863	ACTIVE
AMC407913	SILVER CREEK 51	AMC407863	ACTIVE

PHOENIX, ARIZONA
2016 AUG 18 P 2:25
RECEIVED
BLM AZ STATE OFFICE

NO WARRANTY IS MADE BY BLM
FOR USE OF THE DATA FOR
PURPOSES NOT INTENDED BY BLM

AUG 22 2016
BY: Ram

DEPARTMENT OF THE INTERIOR
 BUREAU OF LAND MANAGEMENT
 MINING CLAIMS

Run Time: 02:12 PM

Customer Information - WITH Serial No. and Claim Name

ACTIVE CLAIMS

<u>Serial No.</u>	<u>Claim Name/Number</u>	<u>Lead Serial No.</u>	<u>Disposition</u>
AMC407914	SILVER CREEK 52	AMC407863	ACTIVE
AMC407915	SILVER CREEK 53	AMC407863	ACTIVE
AMC407916	SILVER CREEK 54	AMC407863	ACTIVE
AMC407925	SILVER CREEK 63	AMC407863	ACTIVE
AMC407926	SILVER CREEK 64	AMC407863	ACTIVE
AMC407927	SILVER CREEK 65	AMC407863	ACTIVE
AMC407928	SILVER CREEK 66	AMC407863	ACTIVE
AMC407929	SILVER CREEK 67	AMC407863	ACTIVE
AMC407930	SILVER CREEK 68	AMC407863	ACTIVE
AMC407931	SILVER CREEK 69	AMC407863	ACTIVE
AMC407932	SILVER CREEK 70	AMC407863	ACTIVE
AMC407933	SILVER CREEK 71	AMC407863	ACTIVE
AMC407934	SILVER CREEK 72	AMC407863	ACTIVE
AMC407935	SILVER CREEK 73	AMC407863	ACTIVE
AMC407936	SILVER CREEK 74	AMC407863	ACTIVE
AMC407937	SILVER CREEK 75	AMC407863	ACTIVE
AMC407938	SILVER CREEK 76	AMC407863	ACTIVE
AMC407939	SILVER CREEK 77	AMC407863	ACTIVE
AMC407940	SILVER CREEK 78	AMC407863	ACTIVE
AMC407941	SILVER CREEK 79	AMC407863	ACTIVE
AMC407942	SILVER CREEK 80	AMC407863	ACTIVE
AMC407943	SILVER CREEK 81	AMC407863	ACTIVE
AMC407944	SILVER CREEK 82	AMC407863	ACTIVE
AMC407945	SILVER CREEK 83	AMC407863	ACTIVE
AMC407946	SILVER CREEK 84	AMC407863	ACTIVE
AMC407947	SILVER CREEK 85	AMC407863	ACTIVE
AMC407948	SILVER CREEK 86	AMC407863	ACTIVE
AMC407949	SILVER CREEK 87	AMC407863	ACTIVE
AMC407950	SILVER CREEK 88	AMC407863	ACTIVE
AMC407951	SILVER CREEK 89	AMC407863	ACTIVE
AMC407952	SILVER CREEK 90	AMC407863	ACTIVE
AMC407953	SILVER CREEK 91	AMC407863	ACTIVE
AMC407954	SILVER CREEK 92	AMC407863	ACTIVE
AMC407955	SILVER CREEK 93	AMC407863	ACTIVE
AMC407956	SILVER CREEK 94	AMC407863	ACTIVE
AMC407957	SILVER CREEK 95	AMC407863	ACTIVE
AMC407958	SILVER CREEK 96	AMC407863	ACTIVE
AMC407959	SILVER CREEK 97	AMC407863	ACTIVE
AMC407970	SILVER CREEK 108	AMC407863	ACTIVE
AMC407971	SILVER CREEK 109	AMC407863	ACTIVE
AMC407972	SILVER CREEK 110	AMC407863	ACTIVE
AMC407973	SILVER CREEK 111	AMC407863	ACTIVE
AMC407974	SILVER CREEK 112	AMC407863	ACTIVE
AMC407975	SILVER CREEK 113	AMC407863	ACTIVE
AMC407976	SILVER CREEK 114	AMC407863	ACTIVE
AMC407977	SILVER CREEK 115	AMC407863	ACTIVE
AMC410214	SILVER CREEK 116	AMC410214	ACTIVE
AMC410215	SILVER CREEK 117	AMC410214	ACTIVE

PHOENIX, ARIZONA
 2016 AUG 18 P 2:25
 RECEIVED
 BLM AZ STATE OFFICE

NO WARRANTY IS MADE BY BLM
 FOR USE OF THE DATA FOR
 PURPOSES NOT INTENDED BY BLM

DEPARTMENT OF THE INTERIOR
BUREAU OF LAND MANAGEMENT
MINING CLAIMS

Customer Information - WITH Serial No. and Claim Name

ACTIVE CLAIMS

Page 3 of 4

<u>Serial No.</u>	<u>Claim Name/Number</u>	<u>Lead Serial No.</u>	<u>Disposition</u>
AMC410216	SILVER CREEK 118	AMC410214	ACTIVE
AMC410217	SILVER CREEK 119	AMC410214	ACTIVE
AMC410218	SILVER CREEK 120	AMC410214	ACTIVE
AMC410219	SILVER CREEK 121	AMC410214	ACTIVE
AMC410220	SILVER CREEK 122	AMC410214	ACTIVE
AMC410221	SILVER CREEK 123	AMC410214	ACTIVE
AMC410222	SILVER CREEK 124	AMC410214	ACTIVE
AMC410223	SILVER CREEK 125	AMC410214	ACTIVE
AMC410224	SILVER CREEK 126	AMC410214	ACTIVE
AMC410225	SILVER CREEK 127	AMC410214	ACTIVE
AMC410226	SILVER CREEK 128	AMC410214	ACTIVE
AMC410227	SILVER CREEK 129	AMC410214	ACTIVE
AMC410228	SILVER CREEK 130	AMC410214	ACTIVE
AMC410229	SILVER CREEK 131	AMC410214	ACTIVE
AMC410230	SILVER CREEK 132	AMC410214	ACTIVE
AMC410231	SILVER CREEK 133	AMC410214	ACTIVE
AMC410232	SILVER CREEK 134	AMC410214	ACTIVE
AMC410233	SILVER CREEK 135	AMC410214	ACTIVE
AMC410234	SILVER CREEK 136	AMC410214	ACTIVE
AMC410235	SILVER CREEK 137	AMC410214	ACTIVE
AMC410236	SILVER CREEK 138	AMC410214	ACTIVE
AMC410237	SILVER CREEK 139	AMC410214	ACTIVE
AMC410238	SILVER CREEK 140	AMC410214	ACTIVE
AMC410239	SILVER CREEK 141	AMC410214	ACTIVE
AMC410240	SILVER CREEK 142	AMC410214	ACTIVE
AMC410241	SILVER CREEK 143	AMC410214	ACTIVE
AMC410242	SILVER CREEK 144	AMC410214	ACTIVE
AMC410243	SILVER CREEK 145	AMC410214	ACTIVE
AMC410244	SILVER CREEK 146	AMC410214	ACTIVE
AMC410245	SILVER CREEK 147	AMC410214	ACTIVE
AMC410246	SILVER CREEK 148	AMC410214	ACTIVE
AMC410247	SILVER CREEK 149	AMC410214	ACTIVE
AMC410248	SILVER CREEK 150	AMC410214	ACTIVE
AMC410249	SILVER CREEK 151	AMC410214	ACTIVE
AMC410250	SILVER CREEK 152	AMC410214	ACTIVE
AMC410251	SILVER CREEK 153	AMC410214	ACTIVE
AMC410252	SILVER CREEK 154	AMC410214	ACTIVE
AMC410253	SILVER CREEK 155	AMC410214	ACTIVE
AMC410254	SILVER CREEK 156	AMC410214	ACTIVE
AMC410255	SILVER CREEK 157	AMC410214	ACTIVE
AMC410256	SILVER CREEK 158	AMC410214	ACTIVE
AMC410257	SILVER CREEK 159	AMC410214	ACTIVE
AMC410258	SILVER CREEK 160	AMC410214	ACTIVE
AMC410259	SILVER CREEK 161	AMC410214	ACTIVE
AMC410260	SILVER CREEK 162	AMC410214	ACTIVE
AMC410261	SILVER CREEK 163	AMC410214	ACTIVE
AMC410262	SILVER CREEK 164	AMC410214	ACTIVE
AMC410263	SILVER CREEK 165	AMC410214	ACTIVE

NO WARRANTY IS MADE BY BLM
FOR USE OF THE DATA FOR
PURPOSES NOT INTENDED BY BLM

RECEIVED
LM AZ STATE OFFICE
2016 AUG 18 P 2:25
PHOENIX, ARIZONA

DEPARTMENT OF THE INTERIOR
BUREAU OF LAND MANAGEMENT
MINING CLAIMS

Run Time: 02:12 PM

Customer Information - WITH Serial No. and Claim Name

ACTIVE CLAIMS

Page 4 of 8

<u>Serial No.</u>	<u>Claim Name/Number</u>	<u>Lead Serial No.</u>	<u>Disposition</u>
AMC410264	SILVER CREEK 166	AMC410214	ACTIVE
AMC410265	SILVER CREEK 167	AMC410214	ACTIVE
AMC410266	SILVER CREEK 168	AMC410214	ACTIVE
AMC410267	SILVER CREEK 169	AMC410214	ACTIVE
AMC410268	SILVER CREEK 170	AMC410214	ACTIVE
AMC410269	SILVER CREEK 171	AMC410214	ACTIVE
AMC410270	SILVER CREEK 172	AMC410214	ACTIVE
AMC410271	SILVER CREEK 173	AMC410214	ACTIVE
AMC410272	SILVER CREEK 174	AMC410214	ACTIVE
AMC410273	SILVER CREEK 175	AMC410214	ACTIVE
AMC410274	SILVER CREEK 176	AMC410214	ACTIVE
AMC410275	SILVER CREEK 177	AMC410214	ACTIVE
AMC410276	SILVER CREEK 178	AMC410214	ACTIVE
AMC410277	SILVER CREEK 179	AMC410214	ACTIVE
AMC410278	SILVER CREEK 180	AMC410214	ACTIVE
AMC410279	SILVER CREEK 181	AMC410214	ACTIVE
AMC410280	SILVER CREEK 182	AMC410214	ACTIVE
AMC410281	SILVER CREEK 183	AMC410214	ACTIVE
AMC410282	SILVER CREEK 184	AMC410214	ACTIVE
AMC413137	SILVER CREEK 185	AMC413137	ACTIVE
AMC413138	SILVER CREEK 186	AMC413137	ACTIVE
AMC413139	SILVER CREEK 187	AMC413137	ACTIVE
AMC413140	SILVER CREEK 188	AMC413137	ACTIVE
AMC413141	SILVER CREEK 189	AMC413137	ACTIVE
AMC413142	SILVER CREEK 190	AMC413137	ACTIVE
AMC413143	SILVER CREEK 191	AMC413137	ACTIVE
AMC413144	SILVER CREEK 192	AMC413137	ACTIVE
AMC413145	SILVER CREEK 193	AMC413137	ACTIVE
AMC427718	SILVER CREEK 194	AMC427718	ACTIVE
AMC427719	SILVER CREEK 195	AMC427718	ACTIVE
AMC427720	SILVER CREEK 196	AMC427718	ACTIVE
AMC427721	SILVER CREEK 197	AMC427718	ACTIVE
AMC427722	SILVER CREEK 198	AMC427718	ACTIVE
AMC427723	SILVER CREEK 199	AMC427718	ACTIVE
AMC427724	SILVER CREEK 200	AMC427718	ACTIVE
AMC427725	SILVER CREEK 201	AMC427718	ACTIVE
AMC428270	SILVER CREEK 202	AMC428270	ACTIVE
AMC428271	SILVER CREEK 203	AMC428270	ACTIVE
AMC428272	SILVER CREEK 204	AMC428270	ACTIVE
AMC428273	SILVER CREEK 205	AMC428270	ACTIVE
AMC428274	SILVER CREEK 206	AMC428270	ACTIVE
AMC428275	SILVER CREEK 207	AMC428270	ACTIVE
AMC428276	SILVER CREEK 208	AMC428270	ACTIVE
AMC428277	SILVER CREEK 209	AMC428270	ACTIVE

Number of ACTIVE cases: 183

RECEIVED
 BLM AZ STATE OFFICE
 2016 AUG 18 P 2 25
 PHOENIX ARIZONA

A CUESTA INTERNATIONAL INC
 PO BOX 7612
 MILTON, CT 06897-7612

CUSTOMER ID: 40944

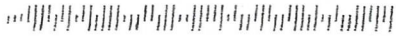
NO WARRANTY IS MADE BY BLM
 FOR USE OF THE DATA FOR
 PURPOSES NOT INTENDED BY BLM

GOLDEN VETERAN ROAD

2440

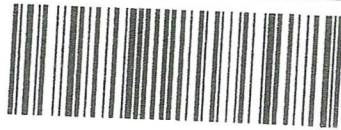
BULLHEAD CITY

AZ 86442



TOP OF ENVELOPE TO THE RIGHT
ADDRESS: FOLD AT DOTTED LINE

CERTIFIED MAIL



7016 0750 0000 3739 6945



1000



85004

U.S. POSTAGE
PAID
KINGMAN, AZ
86401
AUG 16, 16
AMOUNT

\$7.36

R2304M113658-17

RETURN RECEIPT
REQUESTED

PHOENIX, ARIZONA

2016 AUG 18 P 2 27

RECEIVED
BLM AZ STATE OFFICE

BUREAU OF LAND MANAGEMENT
mining CLAIMS mtg

1 NORTH CENTRAL AVE

SUITE 800

PHOENIX AZ

85004-4427

RETURN RECEIPT
REQUESTED

RETURN RECEIPT
REQUESTED

United States Department of the Interior
Bureau of Land Management
 DIV OF LANDS, MINRLS & ENERGY
 ONE N CENTRAL AVE
 PHOENIX, AZ 85004 -4427
 Phone: 602-417-9200

Receipt

No: 3635100

Transaction #: 3738941	
Date of Transaction: 08/19/2016	
CUSTOMER:	
GOLDEN VERTEX CORP 2440 ADOBE RD STE 101 BULLHEAD CITY, AZ 86442-4485 US	

LINE #	QTY	DESCRIPTION	REMARKS	UNIT PRICE	TOTAL
1	1.00	LOCATABLE MINERALS / MINING CLAIMS- NOT NEW-UNADJUD, ONE AUTH NO. ONLY / MINING CLAIM MONEY RECEIVED CASES: AMC407863/\$28365.00	MAINT FEE 2017 - 183	- n/a -	28365.00
TOTAL:					\$28,365.00

PAYMENT INFORMATION					
1	AMOUNT:	28365.00	POSTMARKED:	08/16/2016	
	TYPE:	CHECK	RECEIVED:	08/18/2016	
	CHECK NO:	5958			
	NAME:	GOLDEN VERTEX CORP 2440 ADOBE RD STE 101 BULLHEAD CITY AZ 86442-4485 US			

REMARKS

This receipt was generated by the automated BLM Collections and Billing System and is a paper representation of a portion of the official electronic record contained therein.

GOLDEN VERTEX CORP

407863
410214
413137
427718
428270

2440 Adobe Road, Suite 101
Phone 928-763-6252

Bullhead City, Arizona 86442
Fax 928-763-6259

August 17, 2015

Bureau of Land Management

Mining Claims

One North Central Avenue, Suite 800
Phoenix, Arizona 85004-4427

Enclosed is our check in the amount of \$28,210 for fiscal 2016 yearly maintenance fees for 182 lode claims in the name of Golden Vertex Corp at the rate of \$155 per claim.

Also enclosed is our check in the amount of \$15,965 for fiscal 2016 yearly maintenance fees for 103 lode claims in the name of Patriot Gold at the rate of \$155 per claim.

Also enclosed is our check in the amount of \$28,365 for fiscal 2016 yearly maintenance fees for 183 lode claims in the name of La Cuesta International at the rate of \$155 per claim.

Listings of the three groups of claims are attached.

Please call me in the event that there are any problems.

Thank-you.

RECEIPT # 3374988



L.J. Bardswich, P. Eng.

General Manager

Golden Vertex Corp

928-234-5227 (cell)

BLM RECEIVED
2015 AUG 21 P 2:50
PHOENIX, ARIZONA

ENTERED
AUG 26 2015
BY: le

DEPARTMENT OF THE INTERIOR
BUREAU OF LAND MANAGEMENT
MINING CLAIMS

Customer Information - WITH Serial No. and Claim Name

ACTIVE CLAIMS

183 CLAIMS @ \$155.00 = \$28,365.00

Admin State: AZ
Geo State: AZ

LA CUESTA INTERNATIONAL INC
3349 S STALLION DR
KINGMAN, AZ 86401-8722

CUSTOMER ID: 2354577

<u>Serial No.</u>	<u>Claim Name/Number</u>	<u>Lead Serial No.</u>	<u>Disposition</u>
AMC407863	SILVER CREEK 1	AMC407863	ACTIVE
AMC407864	SILVER CREEK 2	AMC407863	ACTIVE
AMC407865	SILVER CREEK 3	AMC407863	ACTIVE
AMC407866	SILVER CREEK 4	AMC407863	ACTIVE
AMC407867	SILVER CREEK 5	AMC407863	ACTIVE
AMC407868	SILVER CREEK 6	AMC407863	ACTIVE
AMC407869	SILVER CREEK 7	AMC407863	ACTIVE
AMC407870	SILVER CREEK 8	AMC407863	ACTIVE
AMC407871	SILVER CREEK 9	AMC407863	ACTIVE
AMC407872	SILVER CREEK 10	AMC407863	ACTIVE
AMC407873	SILVER CREEK 11	AMC407863	ACTIVE
AMC407874	SILVER CREEK 12	AMC407863	ACTIVE
AMC407875	SILVER CREEK 13	AMC407863	ACTIVE
AMC407876	SILVER CREEK 14	AMC407863	ACTIVE
AMC407877	SILVER CREEK 15	AMC407863	ACTIVE
AMC407878	SILVER CREEK 16	AMC407863	ACTIVE
AMC407879	SILVER CREEK 17	AMC407863	ACTIVE
AMC407880	SILVER CREEK 18	AMC407863	ACTIVE
AMC407881	SILVER CREEK 19	AMC407863	ACTIVE
AMC407882	SILVER CREEK 20	AMC407863	ACTIVE
AMC407883	SILVER CREEK 21	AMC407863	ACTIVE
AMC407884	SILVER CREEK 22	AMC407863	ACTIVE
AMC407893	SILVER CREEK 31	AMC407863	ACTIVE
AMC407894	SILVER CREEK 32	AMC407863	ACTIVE
AMC407895	SILVER CREEK 33	AMC407863	ACTIVE
AMC407896	SILVER CREEK 34	AMC407863	ACTIVE
AMC407897	SILVER CREEK 35	AMC407863	ACTIVE
AMC407898	SILVER CREEK 36	AMC407863	ACTIVE
AMC407899	SILVER CREEK 37	AMC407863	ACTIVE
AMC407900	SILVER CREEK 38	AMC407863	ACTIVE
AMC407901	SILVER CREEK 39	AMC407863	ACTIVE
AMC407902	SILVER CREEK 40	AMC407863	ACTIVE
AMC407903	SILVER CREEK 41	AMC407863	ACTIVE
AMC407904	SILVER CREEK 42	AMC407863	ACTIVE
AMC407905	SILVER CREEK 43	AMC407863	ACTIVE
AMC407906	SILVER CREEK 44	AMC407863	ACTIVE
AMC407907	SILVER CREEK 45	AMC407863	ACTIVE
AMC407908	SILVER CREEK 46	AMC407863	ACTIVE
AMC407909	SILVER CREEK 47	AMC407863	ACTIVE
AMC407910	SILVER CREEK 48	AMC407863	ACTIVE
AMC407911	SILVER CREEK 49	AMC407863	ACTIVE
AMC407912	SILVER CREEK 50	AMC407863	ACTIVE
AMC407913	SILVER CREEK 51	AMC407863	ACTIVE

RECEIVED
BLM STATE OFFICE
2015 AUG 21 P 2:51
PHOENIX, ARIZONA

NO WARRANTY IS MADE BY BLM
FOR USE OF THE DATA FOR
PURPOSES NOT INTENDED BY BLM

DEPARTMENT OF THE INTERIOR
BUREAU OF LAND MANAGEMENT
MINING CLAIMS

Customer Information - WITH Serial No. and Claim Name

ACTIVE CLAIMS

Page 2 of 5

<u>Serial No.</u>	<u>Claim Name/Number</u>	<u>Lead Serial No.</u>	<u>Disposition</u>
AMC407914	SILVER CREEK 52	AMC407863	ACTIVE
AMC407915	SILVER CREEK 53	AMC407863	ACTIVE
AMC407916	SILVER CREEK 54	AMC407863	ACTIVE
AMC407925	SILVER CREEK 63	AMC407863	ACTIVE
AMC407926	SILVER CREEK 64	AMC407863	ACTIVE
AMC407927	SILVER CREEK 65	AMC407863	ACTIVE
AMC407928	SILVER CREEK 66	AMC407863	ACTIVE
AMC407929	SILVER CREEK 67	AMC407863	ACTIVE
AMC407930	SILVER CREEK 68	AMC407863	ACTIVE
AMC407931	SILVER CREEK 69	AMC407863	ACTIVE
AMC407932	SILVER CREEK 70	AMC407863	ACTIVE
AMC407933	SILVER CREEK 71	AMC407863	ACTIVE
AMC407934	SILVER CREEK 72	AMC407863	ACTIVE
AMC407935	SILVER CREEK 73	AMC407863	ACTIVE
AMC407936	SILVER CREEK 74	AMC407863	ACTIVE
AMC407937	SILVER CREEK 75	AMC407863	ACTIVE
AMC407938	SILVER CREEK 76	AMC407863	ACTIVE
AMC407939	SILVER CREEK 77	AMC407863	ACTIVE
AMC407940	SILVER CREEK 78	AMC407863	ACTIVE
AMC407941	SILVER CREEK 79	AMC407863	ACTIVE
AMC407942	SILVER CREEK 80	AMC407863	ACTIVE
AMC407943	SILVER CREEK 81	AMC407863	ACTIVE
AMC407944	SILVER CREEK 82	AMC407863	ACTIVE
AMC407945	SILVER CREEK 83	AMC407863	ACTIVE
AMC407946	SILVER CREEK 84	AMC407863	ACTIVE
AMC407947	SILVER CREEK 85	AMC407863	ACTIVE
AMC407948	SILVER CREEK 86	AMC407863	ACTIVE
AMC407949	SILVER CREEK 87	AMC407863	ACTIVE
AMC407950	SILVER CREEK 88	AMC407863	ACTIVE
AMC407951	SILVER CREEK 89	AMC407863	ACTIVE
AMC407952	SILVER CREEK 90	AMC407863	ACTIVE
AMC407953	SILVER CREEK 91	AMC407863	ACTIVE
AMC407954	SILVER CREEK 92	AMC407863	ACTIVE
AMC407955	SILVER CREEK 93	AMC407863	ACTIVE
AMC407956	SILVER CREEK 94	AMC407863	ACTIVE
AMC407957	SILVER CREEK 95	AMC407863	ACTIVE
AMC407958	SILVER CREEK 96	AMC407863	ACTIVE
AMC407959	SILVER CREEK 97	AMC407863	ACTIVE
AMC407970	SILVER CREEK 108	AMC407863	ACTIVE
AMC407971	SILVER CREEK 109	AMC407863	ACTIVE
AMC407972	SILVER CREEK 110	AMC407863	ACTIVE
AMC407973	SILVER CREEK 111	AMC407863	ACTIVE
AMC407974	SILVER CREEK 112	AMC407863	ACTIVE
AMC407975	SILVER CREEK 113	AMC407863	ACTIVE
AMC407976	SILVER CREEK 114	AMC407863	ACTIVE
AMC407977	SILVER CREEK 115	AMC407863	ACTIVE
AMC410214	SILVER CREEK 116	AMC410214	ACTIVE
AMC410215	SILVER CREEK 117	AMC410214	ACTIVE

RECEIVED
BLM AZ STATE OFFICE
2015 AUG 21 P 2:51
PHOENIX, ARIZONA

NO WARRANTY IS MADE BY BLM
FOR USE OF THE DATA FOR
PURPOSES NOT INTENDED BY BLM

DEPARTMENT OF THE INTERIOR
BUREAU OF LAND MANAGEMENT
MINING CLAIMS

Customer Information - WITH Serial No. and Claim Name

ACTIVE CLAIMS

Page 3 of 5

<u>Serial No.</u>	<u>Claim Name/Number</u>	<u>Lead Serial No.</u>	<u>Disposition</u>
AMC410216	SILVER CREEK 118	AMC410214	ACTIVE
AMC410217	SILVER CREEK 119	AMC410214	ACTIVE
AMC410218	SILVER CREEK 120	AMC410214	ACTIVE
AMC410219	SILVER CREEK 121	AMC410214	ACTIVE
AMC410220	SILVER CREEK 122	AMC410214	ACTIVE
AMC410221	SILVER CREEK 123	AMC410214	ACTIVE
AMC410222	SILVER CREEK 124	AMC410214	ACTIVE
AMC410223	SILVER CREEK 125	AMC410214	ACTIVE
AMC410224	SILVER CREEK 126	AMC410214	ACTIVE
AMC410225	SILVER CREEK 127	AMC410214	ACTIVE
AMC410226	SILVER CREEK 128	AMC410214	ACTIVE
AMC410227	SILVER CREEK 129	AMC410214	ACTIVE
AMC410228	SILVER CREEK 130	AMC410214	ACTIVE
AMC410229	SILVER CREEK 131	AMC410214	ACTIVE
AMC410230	SILVER CREEK 132	AMC410214	ACTIVE
AMC410231	SILVER CREEK 133	AMC410214	ACTIVE
AMC410232	SILVER CREEK 134	AMC410214	ACTIVE
AMC410233	SILVER CREEK 135	AMC410214	ACTIVE
AMC410234	SILVER CREEK 136	AMC410214	ACTIVE
AMC410235	SILVER CREEK 137	AMC410214	ACTIVE
AMC410236	SILVER CREEK 138	AMC410214	ACTIVE
AMC410237	SILVER CREEK 139	AMC410214	ACTIVE
AMC410238	SILVER CREEK 140	AMC410214	ACTIVE
AMC410239	SILVER CREEK 141	AMC410214	ACTIVE
AMC410240	SILVER CREEK 142	AMC410214	ACTIVE
AMC410241	SILVER CREEK 143	AMC410214	ACTIVE
AMC410242	SILVER CREEK 144	AMC410214	ACTIVE
AMC410243	SILVER CREEK 145	AMC410214	ACTIVE
AMC410244	SILVER CREEK 146	AMC410214	ACTIVE
AMC410245	SILVER CREEK 147	AMC410214	ACTIVE
AMC410246	SILVER CREEK 148	AMC410214	ACTIVE
AMC410247	SILVER CREEK 149	AMC410214	ACTIVE
AMC410248	SILVER CREEK 150	AMC410214	ACTIVE
AMC410249	SILVER CREEK 151	AMC410214	ACTIVE
AMC410250	SILVER CREEK 152	AMC410214	ACTIVE
AMC410251	SILVER CREEK 153	AMC410214	ACTIVE
AMC410252	SILVER CREEK 154	AMC410214	ACTIVE
AMC410253	SILVER CREEK 155	AMC410214	ACTIVE
AMC410254	SILVER CREEK 156	AMC410214	ACTIVE
AMC410255	SILVER CREEK 157	AMC410214	ACTIVE
AMC410256	SILVER CREEK 158	AMC410214	ACTIVE
AMC410257	SILVER CREEK 159	AMC410214	ACTIVE
AMC410258	SILVER CREEK 160	AMC410214	ACTIVE
AMC410259	SILVER CREEK 161	AMC410214	ACTIVE
AMC410260	SILVER CREEK 162	AMC410214	ACTIVE
AMC410261	SILVER CREEK 163	AMC410214	ACTIVE
AMC410262	SILVER CREEK 164	AMC410214	ACTIVE
AMC410263	SILVER CREEK 165	AMC410214	ACTIVE

RECEIVED
BLM AZ STATE OFFICE
2015 AUG 21 P 2:51
PHOENIX, ARIZONA

NO WARRANTY IS MADE BY BLM
FOR USE OF THE DATA FOR
PURPOSES NOT INTENDED BY BLM

DEPARTMENT OF THE INTERIOR
BUREAU OF LAND MANAGEMENT
MINING CLAIMS

Customer Information - WITH Serial No. and Claim Name

ACTIVE CLAIMS

<u>Serial No.</u>	<u>Claim Name/Number</u>	<u>Lead Serial No.</u>	<u>Disposition</u>
AMC410264	SILVER CREEK 166	AMC410214	ACTIVE
AMC410265	SILVER CREEK 167	AMC410214	ACTIVE
AMC410266	SILVER CREEK 168	AMC410214	ACTIVE
AMC410267	SILVER CREEK 169	AMC410214	ACTIVE
AMC410268	SILVER CREEK 170	AMC410214	ACTIVE
AMC410269	SILVER CREEK 171	AMC410214	ACTIVE
AMC410270	SILVER CREEK 172	AMC410214	ACTIVE
AMC410271	SILVER CREEK 173	AMC410214	ACTIVE
AMC410272	SILVER CREEK 174	AMC410214	ACTIVE
AMC410273	SILVER CREEK 175	AMC410214	ACTIVE
AMC410274	SILVER CREEK 176	AMC410214	ACTIVE
AMC410275	SILVER CREEK 177	AMC410214	ACTIVE
AMC410276	SILVER CREEK 178	AMC410214	ACTIVE
AMC410277	SILVER CREEK 179	AMC410214	ACTIVE
AMC410278	SILVER CREEK 180	AMC410214	ACTIVE
AMC410279	SILVER CREEK 181	AMC410214	ACTIVE
AMC410280	SILVER CREEK 182	AMC410214	ACTIVE
AMC410281	SILVER CREEK 183	AMC410214	ACTIVE
AMC410282	SILVER CREEK 184	AMC410214	ACTIVE
AMC413137	SILVER CREEK 185	AMC413137	ACTIVE
AMC413138	SILVER CREEK 186	AMC413137	ACTIVE
AMC413139	SILVER CREEK 187	AMC413137	ACTIVE
AMC413140	SILVER CREEK 188	AMC413137	ACTIVE
AMC413141	SILVER CREEK 189	AMC413137	ACTIVE
AMC413142	SILVER CREEK 190	AMC413137	ACTIVE
AMC413143	SILVER CREEK 191	AMC413137	ACTIVE
AMC413144	SILVER CREEK 192	AMC413137	ACTIVE
AMC413145	SILVER CREEK 193	AMC413137	ACTIVE
AMC427718	SILVER CREEK 194	AMC427718	ACTIVE
AMC427719	SILVER CREEK 195	AMC427718	ACTIVE
AMC427720	SILVER CREEK 196	AMC427718	ACTIVE
AMC427721	SILVER CREEK 197	AMC427718	ACTIVE
AMC427722	SILVER CREEK 198	AMC427718	ACTIVE
AMC427723	SILVER CREEK 199	AMC427718	ACTIVE
AMC427724	SILVER CREEK 200	AMC427718	ACTIVE
AMC427725	SILVER CREEK 201	AMC427718	ACTIVE
AMC428270	SILVER CREEK 202	AMC428270	ACTIVE
AMC428271	SILVER CREEK 203	AMC428270	ACTIVE
AMC428272	SILVER CREEK 204	AMC428270	ACTIVE
AMC428273	SILVER CREEK 205	AMC428270	ACTIVE
AMC428274	SILVER CREEK 206	AMC428270	ACTIVE
AMC428275	SILVER CREEK 207	AMC428270	ACTIVE
AMC428276	SILVER CREEK 208	AMC428270	ACTIVE
AMC428277	SILVER CREEK 209	AMC428270	ACTIVE

RECEIVED
BLM PHOENIX OFFICE
2015 AUG 21 P 2:51
PHOENIX, ARIZONA

Number of ACTIVE cases: 183

~~LA CUESTA INTL INC~~
PO BOX 7612
WILTON, CT 06897-7612

~~CUSTOMER ID: 40944~~

NO WARRANTY IS MADE BY BLM
FOR USE OF THE DATA FOR
PURPOSES NOT INTENDED BY BLM

DEPARTMENT OF THE INTERIOR
BUREAU OF LAND MANAGEMENT
MINING CLAIMS

Customer Information - WITH Serial No. and Claim Name

ACTIVE CLAIMS

<u>Serial No.</u>	<u>Claim Name/Number</u>	<u>Lead Serial No.</u>	<u>Disposition</u>
AMC349367	LCI-1	AMC349367	ACTIVE
AMC349368	LCI-2	AMC349367	ACTIVE
AMC349369	LCI-3	AMC349367	ACTIVE
AMC349370	LCI-4	AMC349367	ACTIVE
AMC349373	LCI-7	AMC349367	ACTIVE
AMC6629	MACE	AMC6629	ACTIVE
AMC6630	MACE EXTENSION	AMC6629	ACTIVE

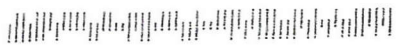
Number of ACTIVE cases: 7

RECEIVED
BLM PHOENIX OFFICE
2015 AUG 21 P 2:51
PHOENIX, ARIZONA

NO WARRANTY IS MADE BY BLM
FOR USE OF THE DATA FOR
PURPOSES NOT INTENDED BY BLM

Golden West

2440 f



Suite 101

Bullhead City, AZ 86442

RECEIVED
BLM AZ STATE OFFICE

2015 AUG 21 P 2:48

PHOENIX, ARIZONA



DEPT OF INTERIOR
BUREAU OF LAND MANAGEMENT
ONE NORTH CENTRAL AVE
Suite 800
Phoenix, AZ

85004-4427

United States Department of the Interior
Bureau of Land Management
 LANDS/RECREATION & PLANNING
 ONE N CENTRAL AVE
 PHOENIX, AZ 85004 -2203
 Phone: 602-417-9200

Receipt

No: 3374988

Transaction #: 3473208	
Date of Transaction: 08/24/2015	
CUSTOMER:	
GOLDEN VERTEX CORP 2440 ADOBE RD STE 101 BULLHEAD CITY, AZ 86442-4485 US	

LINE #	QTY	DESCRIPTION	REMARKS	UNIT PRICE	TOTAL
1	1.00	LOCATABLE MINERALS / MINING CLAIMS-NOT NEW-UNADJUD, ONE AUTH NO. ONLY / MINING CLAIM MONEY RECEIVED CASES: AMC407863/\$28365.00	MAINT FEE PYMNT - 183 2016	- n/a -	28365.00
TOTAL:					\$28,365.00

PAYMENT INFORMATION			
1	AMOUNT:	28365.00	POSTMARKED: 08/20/2015
	TYPE:	CHECK	RECEIVED: 08/21/2015
	CHECK NO:	5606	
	NAME:	GOLDEN VERTEX CORP 2440 ADOBE RD STE 101 BULLHEAD CITY AZ 86442-4485 US	

REMARKS

This receipt was generated by the automated BLM Collections and Billing System and is a paper representation of a portion of the official electronic record contained therein.

ENTERED
 AUG 26 2015
 BY: IR

GOLDEN VERTEX CORP

2440 Adobe Road, Suite 101
Phone 928-763-6252

Bullhead City, Arizona 86442
Fax 928-763-6259

AMC 408939
416914
361998
398978
407863
410214
413137
427718
428270

July 28, 2014

Bureau of Land Management

Mining Claims

One North Central Avenue, Suite 800
Phoenix, Arizona 85004-4427

Enclosed is our check in the amount of \$29,295 for yearly maintenance fees for 189 lode claims in the name of Golden Vertex Corp at the rate of \$155 per claim.

Also enclosed is our check in the amount of \$16,120 for yearly maintenance fees for 104 lode claims in the name of Patriot Gold at the rate of \$155 per claim.

Also enclosed is our check in the amount of \$28,365 for yearly maintenance fees for 183 lode claims in the name of La Cuesta International at the rate of \$155 per claim.

Listings of the three groups of claims are attached.

Please call me in the event that there are any problems.

Thank-you.



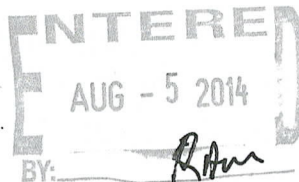
L.J. Bardswich, P. Eng.

General Manager

Golden Vertex Corp

406 579 4097 (cell)

RECEIVED
BLM AZ STATE OFFICE
2014 JUL 31 A 9:29
PHOENIX, ARIZONA



Bureau of Land Management

07 28 2014

Check No. 4870

Document No.	Document Date
JULY 2014	7/28/2014

Original Amount	Net Amount
29,295.00	29,295.00

GVC 1 to 193 Claims AND
 Moss 201 to 211 CLAIMS
 Golden VERTEX CORP CLAIMS
 LEAD SERIAL No AMC 408939 AND
 AMC 416914 AND AMC 420117

NO. OF CLAIMS 189
 AMOUNT \$29295.00
 RECEIPT NO. 3090549
 INT. CADL
 ** BLM-ASO**

Total	29,295.00
--------------	------------------

INTERE
 AUG - 5 2014
 BY: RAM

DEPARTMENT OF THE INTERIOR
 BUREAU OF LAND MANAGEMENT
 MINING CLAIMS
 Customer Information - WITH Serial No. and Claim Name

ACTIVE CLAIMS

Run Date: 07/28/2014 05:10 PM

Page 1 of 5

Admin State: AZ
Geo State: AZ

GOLDEN VERTEX CORP
 2440 ADOBE RD STE 101
 BULLHEAD CITY, AZ 86442-4486

CUSTOMER ID: 2317154

<u>Serial No.</u>	<u>Claim Name/Number</u>	<u>Lead Serial No.</u>	<u>Disposition</u>
AMC408939	GVC 1	AMC408939	ACTIVE
AMC408940	GVC 2	AMC408939	ACTIVE
AMC408941	GVC 3	AMC408939	ACTIVE
AMC408942	GVC 4	AMC408939	ACTIVE
AMC408943	GVC 5	AMC408939	ACTIVE
AMC408944	GVC 6	AMC408939	ACTIVE
AMC408945	GVC 7	AMC408939	ACTIVE
AMC408946	GVC 8	AMC408939	ACTIVE
AMC408947	GVC 9	AMC408939	ACTIVE
AMC408948	GVC 10	AMC408939	ACTIVE
AMC408949	GVC 11	AMC408939	ACTIVE
AMC408950	GVC 12	AMC408939	ACTIVE
AMC408951	GVC 13	AMC408939	ACTIVE
AMC408952	GVC 14	AMC408939	ACTIVE
AMC408953	GVC 15	AMC408939	ACTIVE
AMC408954	GVC 16	AMC408939	ACTIVE
AMC408955	GVC 17	AMC408939	ACTIVE
AMC408956	GVC 18	AMC408939	ACTIVE
AMC408957	GVC 19	AMC408939	ACTIVE
AMC408958	GVC 20	AMC408939	ACTIVE
AMC408959	GVC 21	AMC408939	ACTIVE
AMC408960	GVC 22	AMC408939	ACTIVE
AMC408961	GVC 23	AMC408939	ACTIVE
AMC408962	GVC 24	AMC408939	ACTIVE
AMC408963	GVC 25	AMC408939	ACTIVE
AMC408964	GVC 26	AMC408939	ACTIVE
AMC408965	GVC 27	AMC408939	ACTIVE
AMC408966	GVC 28	AMC408939	ACTIVE
AMC408967	GVC 29	AMC408939	ACTIVE
AMC408968	GVC 30	AMC408939	ACTIVE
AMC408969	GVC 31	AMC408939	ACTIVE
AMC408971	GVC 33	AMC408939	ACTIVE
AMC408972	GVC 34	AMC408939	ACTIVE
AMC408973	GVC 35	AMC408939	ACTIVE
AMC408974	GVC 36	AMC408939	ACTIVE
AMC408975	GVC 37	AMC408939	ACTIVE
AMC408976	GVC 38	AMC408939	ACTIVE
AMC408977	GVC 39	AMC408939	ACTIVE
AMC408978	GVC 40	AMC408939	ACTIVE
AMC408979	GVC 41	AMC408939	ACTIVE
AMC408980	GVC 42	AMC408939	ACTIVE
AMC408981	GVC 43	AMC408939	ACTIVE
AMC408982	GVC 44	AMC408939	ACTIVE

RECEIVED
 BLM AZ STATE OFFICE
 2014 JUL 31 A 9:29
 PHOENIX, ARIZONA

NO WARRANTY IS MADE BY BLM
 FOR USE OF THE DATA FOR
 PURPOSES NOT INTENDED BY BLM

DEPARTMENT OF THE INTERIOR
BUREAU OF LAND MANAGEMENT
MINING CLAIMS

Customer Information - WITH Serial No. and Claim Name

ACTIVE CLAIMS

Run Date: 07/28/2014 05:10 PM

Page 2 of 5

<u>Serial No.</u>	<u>Claim Name/Number</u>	<u>Lead Serial No.</u>	<u>Disposition</u>
AMC408983	GVC 45	AMC408939	ACTIVE
AMC408984	GVC 46	AMC408939	ACTIVE
AMC408985	GVC 47	AMC408939	ACTIVE
AMC408986	GVC 48	AMC408939	ACTIVE
AMC408987	GVC 49	AMC408939	ACTIVE
AMC408988	GVC 50	AMC408939	ACTIVE
AMC408989	GVC 51	AMC408939	ACTIVE
AMC408990	GVC 52	AMC408939	ACTIVE
AMC408991	GVC 53	AMC408939	ACTIVE
AMC408992	GVC 54	AMC408939	ACTIVE
AMC408993	GVC 55	AMC408939	ACTIVE
AMC408994	GVC 56	AMC408939	ACTIVE
AMC408995	GVC 57	AMC408939	ACTIVE
AMC408996	GVC 58	AMC408939	ACTIVE
AMC408997	GVC 59	AMC408939	ACTIVE
AMC408998	GVC 60	AMC408939	ACTIVE
AMC408999	GVC 61	AMC408939	ACTIVE
AMC409000	GVC 62	AMC408939	ACTIVE
AMC409001	GVC 63	AMC408939	ACTIVE
AMC409002	GVC 64	AMC408939	ACTIVE
AMC409003	GVC 65	AMC408939	ACTIVE
AMC409004	GVC 67	AMC408939	ACTIVE
AMC409005	GVC 68	AMC408939	ACTIVE
AMC409006	GVC 69	AMC408939	ACTIVE
AMC409007	GVC 70	AMC408939	ACTIVE
AMC409008	GVC 71	AMC408939	ACTIVE
AMC409009	GVC 72	AMC408939	ACTIVE
AMC409010	GVC 73	AMC408939	ACTIVE
AMC409011	GVC 74	AMC408939	ACTIVE
AMC409012	GVC 75	AMC408939	ACTIVE
AMC409013	GVC 76	AMC408939	ACTIVE
AMC409014	GVC 77	AMC408939	ACTIVE
AMC409015	GVC 78	AMC408939	ACTIVE
AMC409016	GVC 79	AMC408939	ACTIVE
AMC409017	GVC 80	AMC408939	ACTIVE
AMC409018	GVC 81	AMC408939	ACTIVE
AMC409019	GVC 82	AMC408939	ACTIVE
AMC409020	GVC 83	AMC408939	ACTIVE
AMC409021	GVC 84	AMC408939	ACTIVE
AMC409022	GVC 85	AMC408939	ACTIVE
AMC409023	GVC 86	AMC408939	ACTIVE
AMC409024	GVC 87	AMC408939	ACTIVE
AMC409025	GVC 88	AMC408939	ACTIVE
AMC409026	GVC 89	AMC408939	ACTIVE
AMC409027	GVC 90	AMC408939	ACTIVE
AMC409028	GVC 91	AMC408939	ACTIVE
AMC409029	GVC 92	AMC408939	ACTIVE
AMC409030	GVC 93	AMC408939	ACTIVE

PHOENIX, ARIZONA

2014 JUL 31 A 9 30

RECEIVED
BLM AZ STATE OFFICE

NO WARRANTY IS MADE BY BLM
FOR USE OF THE DATA FOR
PURPOSES NOT INTENDED BY BLM

DEPARTMENT OF THE INTERIOR
BUREAU OF LAND MANAGEMENT
MINING CLAIMS
Customer Information - WITH Serial No. and Claim Name

ACTIVE CLAIMS

Run Date: 07/28/2014 05:10 PM

Page 3 of 5

<u>Serial No.</u>	<u>Claim Name/Number</u>	<u>Lead Serial No.</u>	<u>Disposition</u>
AMC409031	GVC 94	AMC408939	ACTIVE
AMC409032	GVC 95	AMC408939	ACTIVE
AMC409033	GVC 96	AMC408939	ACTIVE
AMC409034	GVC 97	AMC408939	ACTIVE
AMC409035	GVC 98	AMC408939	ACTIVE
AMC409036	GVC 99	AMC408939	ACTIVE
AMC409037	GVC 100	AMC408939	ACTIVE
AMC409038	GVC 101	AMC408939	ACTIVE
AMC409039	GVC 102	AMC408939	ACTIVE
AMC409040	GVC 103	AMC408939	ACTIVE
AMC409041	GVC 104	AMC408939	ACTIVE
AMC409042	GVC 105	AMC408939	ACTIVE
AMC409043	GVC 106	AMC408939	ACTIVE
AMC409044	GVC 107	AMC408939	ACTIVE
AMC409045	GVC 108	AMC408939	ACTIVE
AMC409046	GVC 109	AMC408939	ACTIVE
AMC409047	GVC 110	AMC408939	ACTIVE
AMC409048	GVC 111	AMC408939	ACTIVE
AMC409049	GVC 112	AMC408939	ACTIVE
AMC409050	GVC 113	AMC408939	ACTIVE
AMC409051	GVC 114	AMC408939	ACTIVE
AMC409052	GVC 115	AMC408939	ACTIVE
AMC409053	GVC 116	AMC408939	ACTIVE
AMC409054	GVC 117	AMC408939	ACTIVE
AMC409055	GVC 118	AMC408939	ACTIVE
AMC409056	GVC 119	AMC408939	ACTIVE
AMC409057	GVC 120	AMC408939	ACTIVE
AMC409058	GVC 121	AMC408939	ACTIVE
AMC409059	GVC 122	AMC408939	ACTIVE
AMC409060	GVC 123	AMC408939	ACTIVE
AMC409061	GVC 124	AMC408939	ACTIVE
AMC409062	GVC 125	AMC408939	ACTIVE
AMC409063	GVC 126	AMC408939	ACTIVE
AMC409064	GVC 127	AMC408939	ACTIVE
AMC409065	GVC 128	AMC408939	ACTIVE
AMC409066	GVC 129	AMC408939	ACTIVE
AMC409067	GVC 130	AMC408939	ACTIVE
AMC409068	GVC 131	AMC408939	ACTIVE
AMC409069	GVC 132	AMC408939	ACTIVE
AMC409070	GVC 133	AMC408939	ACTIVE
AMC409071	GVC 134	AMC408939	ACTIVE
AMC409072	GVC 135	AMC408939	ACTIVE
AMC409073	GVC 136	AMC408939	ACTIVE
AMC409074	GVC 137	AMC408939	ACTIVE
AMC409075	GVC 138	AMC408939	ACTIVE
AMC409076	GVC 139	AMC408939	ACTIVE
AMC409082	GVC 146	AMC408939	ACTIVE
AMC409083	GVC 147	AMC408939	ACTIVE

RECEIVED
BLM AZ STATE OFFICE
2014 JUL 31 A 9 30
PHOENIX, ARIZONA

NO WARRANTY IS MADE BY BLM
FOR USE OF THE DATA FOR
PURPOSES NOT INTENDED BY BLM

DEPARTMENT OF THE INTERIOR
BUREAU OF LAND MANAGEMENT
MINING CLAIMS

Customer Information - WITH Serial No. and Claim Name

ACTIVE CLAIMS

Run Date: 07/28/2014 05:10 PM

Page 4 of 5

<u>Serial No.</u>	<u>Claim Name/Number</u>	<u>Lead Serial No.</u>	<u>Disposition</u>
AMC409084	GVC 148	AMC408939	ACTIVE
AMC409085	GVC 149	AMC408939	ACTIVE
AMC409086	GVC 150	AMC408939	ACTIVE
AMC409087	GVC 158	AMC408939	ACTIVE
AMC409088	GVC 159	AMC408939	ACTIVE
AMC409089	GVC 160	AMC408939	ACTIVE
AMC409090	GVC 161	AMC408939	ACTIVE
AMC409091	GVC 162	AMC408939	ACTIVE
AMC409092	GVC 163	AMC408939	ACTIVE
AMC409093	GVC 164	AMC408939	ACTIVE
AMC409094	GVC 165	AMC408939	ACTIVE
AMC409095	GVC 166	AMC408939	ACTIVE
AMC409096	GVC 167	AMC408939	ACTIVE
AMC409097	GVC 168	AMC408939	ACTIVE
AMC409098	GVC 169	AMC408939	ACTIVE
AMC409099	GVC 170	AMC408939	ACTIVE
AMC409100	GVC 171	AMC408939	ACTIVE
AMC409101	GVC 172	AMC408939	ACTIVE
AMC409102	GVC 173	AMC408939	ACTIVE
AMC409103	GVC 174	AMC408939	ACTIVE
AMC409104	GVC 175	AMC408939	ACTIVE
AMC409105	GVC 176	AMC408939	ACTIVE
AMC409106	GVC 177	AMC408939	ACTIVE
AMC409107	GVC 178	AMC408939	ACTIVE
AMC409108	GVC 179	AMC408939	ACTIVE
AMC409109	GVC 180	AMC408939	ACTIVE
AMC409110	GVC 181	AMC408939	ACTIVE
AMC409111	GVC 182	AMC408939	ACTIVE
AMC409112	GVC 183	AMC408939	ACTIVE
AMC409113	GVC 184	AMC408939	ACTIVE
AMC409114	GVC 185	AMC408939	ACTIVE
AMC409115	GVC 186	AMC408939	ACTIVE
AMC409116	GVC 187	AMC408939	ACTIVE
AMC409117	GVC 188	AMC408939	ACTIVE
AMC409118	GVC 189	AMC408939	ACTIVE
AMC409119	GVC 190	AMC408939	ACTIVE
AMC409120	GVC 191	AMC408939	ACTIVE
AMC409121	GVC 192	AMC408939	ACTIVE
AMC409122	GVC 193	AMC408939	ACTIVE

Number of ACTIVE cases: 178

GOLDEN VERTEX CORP
2670 SANCTUARY DR
BULLHEAD CITY, AZ 86442-8440

PHOENIX, ARIZONA

CUSTOMER ID: 2335699

<u>Serial No.</u>	<u>Claim Name/Number</u>	<u>Lead Serial No.</u>	<u>Disposition</u>
AMC416914	MOSS 201	AMC416914	ACTIVE
AMC416915	MOSS 202	AMC416914	ACTIVE
AMC416916	MOSS 203	AMC416914	ACTIVE

RECEIVED
BLM AZ STATE OFFICE
2014 JUL 31 10:30 AM

NO WARRANTY IS MADE BY BLM
FOR USE OF THE DATA FOR
PURPOSES NOT INTENDED BY BLM

DEPARTMENT OF THE INTERIOR
BUREAU OF LAND MANAGEMENT
MINING CLAIMS
Customer Information - WITH Serial No. and Claim Name

ACTIVE CLAIMS

Run Date: 07/28/2014 05:10 PM

Page 5 of 5

<u>Serial No.</u>	<u>Claim Name/Number</u>	<u>Lead Serial No.</u>	<u>Disposition</u>
AMC416917	MOSS 204	AMC416914	ACTIVE
AMC416918	MOSS 205	AMC416914	ACTIVE
AMC416919	MOSS 206	AMC416914	ACTIVE
AMC416920	MOSS 207	AMC416914	ACTIVE
AMC416921	MOSS 208	AMC416914	ACTIVE
AMC416922	MOSS 209	AMC416914	ACTIVE
AMC420117	MOSS 210	AMC420117	ACTIVE
AMC420118	MOSS 211	AMC420117	ACTIVE

Number of ACTIVE cases: 11

RECEIVED
BLM AZ STATE OFFICE
2014 JUL 31 A 9 30
PHOENIX, ARIZONA

NO WARRANTY IS MADE BY BLM
FOR USE OF THE DATA FOR
PURPOSES NOT INTENDED BY BLM

United States Department of the Interior
Bureau of Land Management
 LANDS/RECREATION & PLANNING
 ONE N CENTRAL AVE
 PHOENIX, AZ 85004 -2203
 Phone: 602-417-9200

ENTERED
 AUG - 5 2014
 BY: *RAM*

Receipt

No: 3090549

Transaction #: 3181939	
Date of Transaction: 08/01/2014	
CUSTOMER:	
GOLDEN VERTEX CORP 2440 ADOBE RD STE 101 BULLHEAD CITY, AZ 86442-4485 US	

LINE #	QTY	DESCRIPTION	REMARKS	UNIT PRICE	TOTAL
1	1.00	LOCATABLE MINERALS / MINING CLAIMS-NOT NEW-UNADJUD, ONE AUTH NO. ONLY / MINING CLAIM MONEY RECEIVED CASES: AMC408939/\$29295.00	MAINT FEE PYMNT (189) 2015	- n/a -	29295.00
TOTAL:					\$29,295.00

PAYMENT INFORMATION					
1	AMOUNT:	29295.00	POSTMARKED:	07/30/2014	
	TYPE:	CHECK	RECEIVED:	07/31/2014	
	CHECK NO:	4870			
	NAME:	GOLDEN VERTEX CORP 2440 ADOBE RD STE 101 BULLHEAD CITY AZ 86442-4485 US			

REMARKS

This receipt was generated by the automated BLM Collections and Billing System and is a paper representation of a portion of the official electronic record contained therein.

Bureau of Land Management

07 28 2014

Check No. 4871

Document No.	Document Date	Original Amount	Net Amount
JULY 2014	7/28/2014	16,120.00	16,120.00

Moss 1 to 70 and Moss 118 to 148 Claims

Patriot Gold Claims

Lead Serial No AMC 361998 AND 398978

NO. OF CLAIMS 104
 AMOUNT \$16,120.00
 RECEIPT NO. 3090553
 INIT. D.A.

** BLM-ASO**

Total 16,120.00

ENTERED
 AUG - 5 2014
 BY: Ram

DEPARTMENT OF THE INTERIOR
BUREAU OF LAND MANAGEMENT
MINING CLAIMS
Customer Information - WITH Serial No. and Claim Name

ACTIVE CLAIMS

Run Date: 07/28/2014 05:36 PM

Admin State: AZ
Geo State: AZ

PATRIOT GOLD CORP
3651 LINDELL RD STE D165
LAS VEGAS, NV 89103-1254

CUSTOMER ID: 2348704

<u>Serial No.</u>	<u>Claim Name/Number</u>	<u>Lead Serial No.</u>	<u>Disposition</u>
AMC361998	MOSS 11	AMC361998	ACTIVE
AMC361999	MOSS 12	AMC361998	ACTIVE
AMC362000	MOSS 13	AMC361998	ACTIVE
AMC362001	MOSS 14	AMC361998	ACTIVE
AMC362002	MOSS 15	AMC361998	ACTIVE
AMC362003	MOSS 16	AMC361998	ACTIVE
AMC362004	MOSS 17	AMC361998	ACTIVE
AMC362005	MOSS 18	AMC361998	ACTIVE
AMC362006	MOSS 19	AMC361998	ACTIVE
AMC362007	MOSS 20	AMC361998	ACTIVE
AMC362008	MOSS 21	AMC361998	ACTIVE
AMC362009	MOSS 22	AMC361998	ACTIVE
AMC362010	MOSS 23	AMC361998	ACTIVE
AMC362011	MOSS 24	AMC361998	ACTIVE
AMC362012	MOSS 25	AMC361998	ACTIVE
AMC362013	MOSS 26	AMC361998	ACTIVE
AMC362014	MOSS 27	AMC361998	ACTIVE
AMC362015	MOSS 28	AMC361998	ACTIVE
AMC362016	MOSS 29	AMC361998	ACTIVE
AMC362017	MOSS 30	AMC361998	ACTIVE
AMC362018	MOSS 31	AMC361998	ACTIVE
AMC362019	MOSS 32	AMC361998	ACTIVE
AMC362020	MOSS 33	AMC361998	ACTIVE
AMC362021	MOSS 33F	AMC361998	ACTIVE
AMC362022	MOSS 34	AMC361998	ACTIVE
AMC362023	MOSS 35	AMC361998	ACTIVE
AMC362024	MOSS 36	AMC361998	ACTIVE
AMC362025	MOSS 37	AMC361998	ACTIVE
AMC362026	MOSS 38	AMC361998	ACTIVE
AMC362027	MOSS 39	AMC361998	ACTIVE
AMC362028	MOSS 39F	AMC361998	ACTIVE
AMC362029	MOSS 40	AMC361998	ACTIVE
AMC362030	MOSS 41	AMC361998	ACTIVE
AMC362031	MOSS 42	AMC361998	ACTIVE
AMC362032	MOSS 43	AMC361998	ACTIVE
AMC362033	MOSS 44	AMC361998	ACTIVE
AMC362034	MOSS 45	AMC361998	ACTIVE
AMC362035	MOSS 46	AMC361998	ACTIVE
AMC362036	MOSS 47	AMC361998	ACTIVE
AMC362037	MOSS 47B	AMC361998	ACTIVE
AMC362038	MOSS 48	AMC361998	ACTIVE
AMC362039	MOSS 49	AMC361998	ACTIVE
AMC362040	MOSS 50	AMC361998	ACTIVE

PHOENIX, ARIZONA

2014 JUL 31 A 9 30

RECEIVED
BLM AZ STATE OFFICE

NO WARRANTY IS MADE BY BLM
FOR USE OF THE DATA FOR
PURPOSES NOT INTENDED BY BLM

DEPARTMENT OF THE INTERIOR
 BUREAU OF LAND MANAGEMENT
 MINING CLAIMS

Customer Information - WITH Serial No. and Claim Name

ACTIVE CLAIMS

Run Date: 07/28/2014 05:36 PM

Page 2 of 3

<u>Serial No.</u>	<u>Claim Name/Number</u>	<u>Lead Serial No.</u>	<u>Disposition</u>
AMC362041	MOSS 51	AMC361998	ACTIVE
AMC362042	MOSS 52	AMC361998	ACTIVE
AMC362043	MOSS 53	AMC361998	ACTIVE
AMC362044	MOSS 54	AMC361998	ACTIVE
AMC362045	MOSS 55	AMC361998	ACTIVE
AMC362046	MOSS 56	AMC361998	ACTIVE
AMC362047	MOSS 57	AMC361998	ACTIVE
AMC362048	MOSS 58	AMC361998	ACTIVE
AMC362049	MOSS 59	AMC361998	ACTIVE
AMC362050	MOSS 60	AMC361998	ACTIVE
AMC362051	MOSS 61	AMC361998	ACTIVE
AMC362052	MOSS 62	AMC361998	ACTIVE
AMC362053	MOSS 63	AMC361998	ACTIVE
AMC362054	MOSS 64	AMC361998	ACTIVE
AMC362055	MOSS 65	AMC361998	ACTIVE
AMC362056	MOSS 66	AMC361998	ACTIVE
AMC362057	MOSS 67	AMC361998	ACTIVE
AMC362058	MOSS 68	AMC361998	ACTIVE
AMC362059	MOSS 69	AMC361998	ACTIVE
AMC362060	MOSS 70	AMC361998	ACTIVE
AMC398978	MOSS 1	AMC398978	ACTIVE
AMC398979	MOSS 2	AMC398978	ACTIVE
AMC398980	MOSS 3	AMC398978	ACTIVE
AMC398981	MOSS 4	AMC398978	ACTIVE
AMC398982	MOSS 5	AMC398978	ACTIVE
AMC398983	MOSS 6	AMC398978	ACTIVE
AMC398984	MOSS 7	AMC398978	ACTIVE
AMC398985	MOSS 8	AMC398978	ACTIVE
AMC398986	MOSS 9	AMC398978	ACTIVE
AMC398987	MOSS 10	AMC398978	ACTIVE
AMC398988	MOSS 118	AMC398978	ACTIVE
AMC398989	MOSS 119	AMC398978	ACTIVE
AMC398990	MOSS 120	AMC398978	ACTIVE
AMC398991	MOSS 121	AMC398978	ACTIVE
AMC398992	MOSS 122	AMC398978	ACTIVE
AMC398993	MOSS 123	AMC398978	ACTIVE
AMC398994	MOSS 124	AMC398978	ACTIVE
AMC398995	MOSS 125	AMC398978	ACTIVE
AMC398996	MOSS 126	AMC398978	ACTIVE
AMC398997	MOSS 127	AMC398978	ACTIVE
AMC398998	MOSS 128	AMC398978	ACTIVE
AMC398999	MOSS 129	AMC398978	ACTIVE
AMC399000	MOSS 130	AMC398978	ACTIVE
AMC399001	MOSS 131	AMC398978	ACTIVE
AMC399002	MOSS 132	AMC398978	ACTIVE
AMC399003	MOSS 133	AMC398978	ACTIVE
AMC399004	MOSS 134	AMC398978	ACTIVE
AMC399005	MOSS 135	AMC398978	ACTIVE

RECEIVED
 BLM AZ STATE OFFICE
 2014 JUL 31 A 9 30
 PHOENIX, ARIZONA

DEPARTMENT OF THE INTERIOR
BUREAU OF LAND MANAGEMENT
MINING CLAIMS
Customer Information - WITH Serial No. and Claim Name

ACTIVE CLAIMS

Run Date: 07/28/2014 05:36 PM

Page 3 of 3

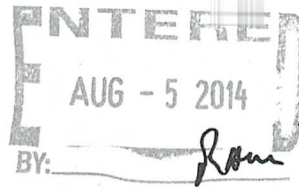
<u>Serial No.</u>	<u>Claim Name/Number</u>	<u>Lead Serial No.</u>	<u>Disposition</u>
AMC399006	MOSS 136	AMC398978	ACTIVE
AMC399007	MOSS 137	AMC398978	ACTIVE
AMC399008	MOSS 138	AMC398978	ACTIVE
AMC399009	MOSS 139	AMC398978	ACTIVE
AMC399010	MOSS 140	AMC398978	ACTIVE
AMC399011	MOSS 141	AMC398978	ACTIVE
AMC399012	MOSS 142	AMC398978	ACTIVE
AMC399013	MOSS 143	AMC398978	ACTIVE
AMC399014	MOSS 144	AMC398978	ACTIVE
AMC399015	MOSS 145	AMC398978	ACTIVE
AMC399016	MOSS 146	AMC398978	ACTIVE
AMC399017	MOSS 147	AMC398978	ACTIVE
AMC399018	MOSS 148	AMC398978	ACTIVE

Number of ACTIVE cases: 104

PHOENIX, ARIZONA
2014 JUL 31 4 30
RECEIVED
BLM AZ STATE OFFICE

NO WARRANTY IS MADE BY BLM
FOR USE OF THE DATA FOR
PURPOSES NOT INTENDED BY BLM

United States Department of the Interior
Bureau of Land Management
 LANDS/RECREATION & PLANNING
 ONE N CENTRAL AVE
 PHOENIX, AZ 85004 -2203
 Phone: 602-417-9200



Receipt

No:

3090553

Transaction #: 3181942	
Date of Transaction: 08/01/2014	
CUSTOMER:	
GOLDEN VERTEX CORP 2440 ADOBE RD STE 101 BULLHEAD CITY, AZ 86442-4485 US	

LINE #	QTY	DESCRIPTION	REMARKS	UNIT PRICE	TOTAL
1	1.00	LOCATABLE MINERALS / MINING CLAIMS-NOT NEW-UNADJUD, ONE AUTH NO. ONLY / MINING CLAIM MONEY RECEIVED CASES: AMC361998/\$16120.00	MAINT FEE PYMNT (104) 2015	- n/a -	16120.00
TOTAL:					\$16,120.00

PAYMENT INFORMATION					
1	AMOUNT:	16120.00	POSTMARKED:	08/30/2014	
	TYPE:	CHECK	RECEIVED:	07/31/2014	
	CHECK NO:	4871			
	NAME:	GOLDEN VERTEX CORP 2440 ADOBE RD STE 101 BULLHEAD CITY AZ 86442-4485 US			

REMARKS

This receipt was generated by the automated BLM Collections and Billing System and is a paper representation of a portion of the official electronic record contained therein.

Bureau of Land Management

07 28 2014

Check No. 4872

Document No.
JULY 2014

Document Date
7/28/2014

Original Amount
28,365.00

Net Amount
28,365.00

SILVER CREEK 1 to SILVER CREEK 209 CLAIMS

LA CURSTA INTERNATIONAL

LEAD SERIAL No AMC 407863 AND 410214

AND AMC 413137 NO. OF CLAIMS 427718 AND 428270

AMOUNT

28365.00 183

RECEIPT NO.

3090554

INIT.

AM

** BLM-ASO**

Total

28,365.00

ENTERED
AUG - 5 2014
BY: RAM

DEPARTMENT OF THE INTERIOR
BUREAU OF LAND MANAGEMENT
MINING CLAIMS

Customer Information - WITH Serial No. and Claim Name

ACTIVE CLAIMS

Run Date: 07/28/2014 05:19 PM

Admin State: AZ

Geo State: AZ

LA CUESTA INTERNATIONAL INC

3349 S STALLION DR
KINGMAN, AZ 86401-8722

CUSTOMER ID: 2354577

<u>Serial No.</u>	<u>Claim Name/Number</u>	<u>Lead Serial No.</u>	<u>Disposition</u>
AMC407863	SILVER CREEK 1	AMC407863	ACTIVE
AMC407864	SILVER CREEK 2	AMC407863	ACTIVE
AMC407865	SILVER CREEK 3	AMC407863	ACTIVE
AMC407866	SILVER CREEK 4	AMC407863	ACTIVE
AMC407867	SILVER CREEK 5	AMC407863	ACTIVE
AMC407868	SILVER CREEK 6	AMC407863	ACTIVE
AMC407869	SILVER CREEK 7	AMC407863	ACTIVE
AMC407870	SILVER CREEK 8	AMC407863	ACTIVE
AMC407871	SILVER CREEK 9	AMC407863	ACTIVE
AMC407872	SILVER CREEK 10	AMC407863	ACTIVE
AMC407873	SILVER CREEK 11	AMC407863	ACTIVE
AMC407874	SILVER CREEK 12	AMC407863	ACTIVE
AMC407875	SILVER CREEK 13	AMC407863	ACTIVE
AMC407876	SILVER CREEK 14	AMC407863	ACTIVE
AMC407877	SILVER CREEK 15	AMC407863	ACTIVE
AMC407878	SILVER CREEK 16	AMC407863	ACTIVE
AMC407879	SILVER CREEK 17	AMC407863	ACTIVE
AMC407880	SILVER CREEK 18	AMC407863	ACTIVE
AMC407881	SILVER CREEK 19	AMC407863	ACTIVE
AMC407882	SILVER CREEK 20	AMC407863	ACTIVE
AMC407883	SILVER CREEK 21	AMC407863	ACTIVE
AMC407884	SILVER CREEK 22	AMC407863	ACTIVE
AMC407893	SILVER CREEK 31	AMC407863	ACTIVE
AMC407894	SILVER CREEK 32	AMC407863	ACTIVE
AMC407895	SILVER CREEK 33	AMC407863	ACTIVE
AMC407896	SILVER CREEK 34	AMC407863	ACTIVE
AMC407897	SILVER CREEK 35	AMC407863	ACTIVE
AMC407898	SILVER CREEK 36	AMC407863	ACTIVE
AMC407899	SILVER CREEK 37	AMC407863	ACTIVE
AMC407900	SILVER CREEK 38	AMC407863	ACTIVE
AMC407901	SILVER CREEK 39	AMC407863	ACTIVE
AMC407902	SILVER CREEK 40	AMC407863	ACTIVE
AMC407903	SILVER CREEK 41	AMC407863	ACTIVE
AMC407904	SILVER CREEK 42	AMC407863	ACTIVE
AMC407905	SILVER CREEK 43	AMC407863	ACTIVE
AMC407906	SILVER CREEK 44	AMC407863	ACTIVE
AMC407907	SILVER CREEK 45	AMC407863	ACTIVE
AMC407908	SILVER CREEK 46	AMC407863	ACTIVE
AMC407909	SILVER CREEK 47	AMC407863	ACTIVE
AMC407910	SILVER CREEK 48	AMC407863	ACTIVE
AMC407911	SILVER CREEK 49	AMC407863	ACTIVE
AMC407912	SILVER CREEK 50	AMC407863	ACTIVE
AMC407913	SILVER CREEK 51	AMC407863	ACTIVE

NO WARRANTY IS MADE BY BLM
FOR USE OF THE DATA FOR
PURPOSES NOT INTENDED BY BLM

DEPARTMENT OF THE INTERIOR
 BUREAU OF LAND MANAGEMENT
 MINING CLAIMS

Customer Information - WITH Serial No. and Claim Name

ACTIVE CLAIMS

Run Date: 07/28/2014 05:19 PM

Page 2 of 4

<u>Serial No.</u>	<u>Claim Name/Number</u>	<u>Lead Serial No.</u>	<u>Disposition</u>
AMC407914	SILVER CREEK 52	AMC407863	ACTIVE
AMC407915	SILVER CREEK 53	AMC407863	ACTIVE
AMC407916	SILVER CREEK 54	AMC407863	ACTIVE
AMC407925	SILVER CREEK 63	AMC407863	ACTIVE
AMC407926	SILVER CREEK 64	AMC407863	ACTIVE
AMC407927	SILVER CREEK 65	AMC407863	ACTIVE
AMC407928	SILVER CREEK 66	AMC407863	ACTIVE
AMC407929	SILVER CREEK 67	AMC407863	ACTIVE
AMC407930	SILVER CREEK 68	AMC407863	ACTIVE
AMC407931	SILVER CREEK 69	AMC407863	ACTIVE
AMC407932	SILVER CREEK 70	AMC407863	ACTIVE
AMC407933	SILVER CREEK 71	AMC407863	ACTIVE
AMC407934	SILVER CREEK 72	AMC407863	ACTIVE
AMC407935	SILVER CREEK 73	AMC407863	ACTIVE
AMC407936	SILVER CREEK 74	AMC407863	ACTIVE
AMC407937	SILVER CREEK 75	AMC407863	ACTIVE
AMC407938	SILVER CREEK 76	AMC407863	ACTIVE
AMC407939	SILVER CREEK 77	AMC407863	ACTIVE
AMC407940	SILVER CREEK 78	AMC407863	ACTIVE
AMC407941	SILVER CREEK 79	AMC407863	ACTIVE
AMC407942	SILVER CREEK 80	AMC407863	ACTIVE
AMC407943	SILVER CREEK 81	AMC407863	ACTIVE
AMC407944	SILVER CREEK 82	AMC407863	ACTIVE
AMC407945	SILVER CREEK 83	AMC407863	ACTIVE
AMC407946	SILVER CREEK 84	AMC407863	ACTIVE
AMC407947	SILVER CREEK 85	AMC407863	ACTIVE
AMC407948	SILVER CREEK 86	AMC407863	ACTIVE
AMC407949	SILVER CREEK 87	AMC407863	ACTIVE
AMC407950	SILVER CREEK 88	AMC407863	ACTIVE
AMC407951	SILVER CREEK 89	AMC407863	ACTIVE
AMC407952	SILVER CREEK 90	AMC407863	ACTIVE
AMC407953	SILVER CREEK 91	AMC407863	ACTIVE
AMC407954	SILVER CREEK 92	AMC407863	ACTIVE
AMC407955	SILVER CREEK 93	AMC407863	ACTIVE
AMC407956	SILVER CREEK 94	AMC407863	ACTIVE
AMC407957	SILVER CREEK 95	AMC407863	ACTIVE
AMC407958	SILVER CREEK 96	AMC407863	ACTIVE
AMC407959	SILVER CREEK 97	AMC407863	ACTIVE
AMC407970	SILVER CREEK 108	AMC407863	ACTIVE
AMC407971	SILVER CREEK 109	AMC407863	ACTIVE
AMC407972	SILVER CREEK 110	AMC407863	ACTIVE
AMC407973	SILVER CREEK 111	AMC407863	ACTIVE
AMC407974	SILVER CREEK 112	AMC407863	ACTIVE
AMC407975	SILVER CREEK 113	AMC407863	ACTIVE
AMC407976	SILVER CREEK 114	AMC407863	ACTIVE
AMC407977	SILVER CREEK 115	AMC407863	ACTIVE
AMC410214	SILVER CREEK 116	AMC410214	ACTIVE
AMC410215	SILVER CREEK 117	AMC410214	ACTIVE

RECEIVED
 BLM AZ STATE OFFICE

NO WARRANTY IS MADE BY BLM
 FOR USE OF THE DATA FOR
 PURPOSES NOT INTENDED BY BLM

DEPARTMENT OF THE INTERIOR
 BUREAU OF LAND MANAGEMENT
 MINING CLAIMS

Customer Information - WITH Serial No. and Claim Name

ACTIVE CLAIMS

Run Date: 07/28/2014 05:19 PM

Page 3 of 4

<u>Serial No.</u>	<u>Claim Name/Number</u>	<u>Lead Serial No.</u>	<u>Disposition</u>
AMC410216	SILVER CREEK 118	AMC410214	ACTIVE
AMC410217	SILVER CREEK 119	AMC410214	ACTIVE
AMC410218	SILVER CREEK 120	AMC410214	ACTIVE
AMC410219	SILVER CREEK 121	AMC410214	ACTIVE
AMC410220	SILVER CREEK 122	AMC410214	ACTIVE
AMC410221	SILVER CREEK 123	AMC410214	ACTIVE
AMC410222	SILVER CREEK 124	AMC410214	ACTIVE
AMC410223	SILVER CREEK 125	AMC410214	ACTIVE
AMC410224	SILVER CREEK 126	AMC410214	ACTIVE
AMC410225	SILVER CREEK 127	AMC410214	ACTIVE
AMC410226	SILVER CREEK 128	AMC410214	ACTIVE
AMC410227	SILVER CREEK 129	AMC410214	ACTIVE
AMC410228	SILVER CREEK 130	AMC410214	ACTIVE
AMC410229	SILVER CREEK 131	AMC410214	ACTIVE
AMC410230	SILVER CREEK 132	AMC410214	ACTIVE
AMC410231	SILVER CREEK 133	AMC410214	ACTIVE
AMC410232	SILVER CREEK 134	AMC410214	ACTIVE
AMC410233	SILVER CREEK 135	AMC410214	ACTIVE
AMC410234	SILVER CREEK 136	AMC410214	ACTIVE
AMC410235	SILVER CREEK 137	AMC410214	ACTIVE
AMC410236	SILVER CREEK 138	AMC410214	ACTIVE
AMC410237	SILVER CREEK 139	AMC410214	ACTIVE
AMC410238	SILVER CREEK 140	AMC410214	ACTIVE
AMC410239	SILVER CREEK 141	AMC410214	ACTIVE
AMC410240	SILVER CREEK 142	AMC410214	ACTIVE
AMC410241	SILVER CREEK 143	AMC410214	ACTIVE
AMC410242	SILVER CREEK 144	AMC410214	ACTIVE
AMC410243	SILVER CREEK 145	AMC410214	ACTIVE
AMC410244	SILVER CREEK 146	AMC410214	ACTIVE
AMC410245	SILVER CREEK 147	AMC410214	ACTIVE
AMC410246	SILVER CREEK 148	AMC410214	ACTIVE
AMC410247	SILVER CREEK 149	AMC410214	ACTIVE
AMC410248	SILVER CREEK 150	AMC410214	ACTIVE
AMC410249	SILVER CREEK 151	AMC410214	ACTIVE
AMC410250	SILVER CREEK 152	AMC410214	ACTIVE
AMC410251	SILVER CREEK 153	AMC410214	ACTIVE
AMC410252	SILVER CREEK 154	AMC410214	ACTIVE
AMC410253	SILVER CREEK 155	AMC410214	ACTIVE
AMC410254	SILVER CREEK 156	AMC410214	ACTIVE
AMC410255	SILVER CREEK 157	AMC410214	ACTIVE
AMC410256	SILVER CREEK 158	AMC410214	ACTIVE
AMC410257	SILVER CREEK 159	AMC410214	ACTIVE
AMC410258	SILVER CREEK 160	AMC410214	ACTIVE
AMC410259	SILVER CREEK 161	AMC410214	ACTIVE
AMC410260	SILVER CREEK 162	AMC410214	ACTIVE
AMC410261	SILVER CREEK 163	AMC410214	ACTIVE
AMC410262	SILVER CREEK 164	AMC410214	ACTIVE
AMC410263	SILVER CREEK 165	AMC410214	ACTIVE

NO WARRANTY IS MADE BY BLM
 FOR USE OF THE DATA FOR
 PURPOSES NOT INTENDED BY BLM

DEPARTMENT OF THE INTERIOR
BUREAU OF LAND MANAGEMENT
MINING CLAIMS
Customer Information - WITH Serial No. and Claim Name

ACTIVE CLAIMS

Run Date: 07/28/2014 05:19 PM

<u>Serial No.</u>	<u>Claim Name/Number</u>	<u>Lead Serial No.</u>	<u>Disposition</u>
AMC410264	SILVER CREEK 166	AMC410214	ACTIVE
AMC410265	SILVER CREEK 167	AMC410214	ACTIVE
AMC410266	SILVER CREEK 168	AMC410214	ACTIVE
AMC410267	SILVER CREEK 169	AMC410214	ACTIVE
AMC410268	SILVER CREEK 170	AMC410214	ACTIVE
AMC410269	SILVER CREEK 171	AMC410214	ACTIVE
AMC410270	SILVER CREEK 172	AMC410214	ACTIVE
AMC410271	SILVER CREEK 173	AMC410214	ACTIVE
AMC410272	SILVER CREEK 174	AMC410214	ACTIVE
AMC410273	SILVER CREEK 175	AMC410214	ACTIVE
AMC410274	SILVER CREEK 176	AMC410214	ACTIVE
AMC410275	SILVER CREEK 177	AMC410214	ACTIVE
AMC410276	SILVER CREEK 178	AMC410214	ACTIVE
AMC410277	SILVER CREEK 179	AMC410214	ACTIVE
AMC410278	SILVER CREEK 180	AMC410214	ACTIVE
AMC410279	SILVER CREEK 181	AMC410214	ACTIVE
AMC410280	SILVER CREEK 182	AMC410214	ACTIVE
AMC410281	SILVER CREEK 183	AMC410214	ACTIVE
AMC410282	SILVER CREEK 184	AMC410214	ACTIVE
AMC413137	SILVER CREEK 185	AMC413137	ACTIVE
AMC413138	SILVER CREEK 186	AMC413137	ACTIVE
AMC413139	SILVER CREEK 187	AMC413137	ACTIVE
AMC413140	SILVER CREEK 188	AMC413137	ACTIVE
AMC413141	SILVER CREEK 189	AMC413137	ACTIVE
AMC413142	SILVER CREEK 190	AMC413137	ACTIVE
AMC413143	SILVER CREEK 191	AMC413137	ACTIVE
AMC413144	SILVER CREEK 192	AMC413137	ACTIVE
AMC413145	SILVER CREEK 193	AMC413137	ACTIVE
AMC427718	SILVER CREEK 194	AMC427718	ACTIVE
AMC427719	SILVER CREEK 195	AMC427718	ACTIVE
AMC427720	SILVER CREEK 196	AMC427718	ACTIVE
AMC427721	SILVER CREEK 197	AMC427718	ACTIVE
AMC427722	SILVER CREEK 198	AMC427718	ACTIVE
AMC427723	SILVER CREEK 199	AMC427718	ACTIVE
AMC427724	SILVER CREEK 200	AMC427718	ACTIVE
AMC427725	SILVER CREEK 201	AMC427718	ACTIVE
AMC428270	SILVER CREEK 202	AMC428270	ACTIVE
AMC428271	SILVER CREEK 203	AMC428270	ACTIVE
AMC428272	SILVER CREEK 204	AMC428270	ACTIVE
AMC428273	SILVER CREEK 205	AMC428270	ACTIVE
AMC428274	SILVER CREEK 206	AMC428270	ACTIVE
AMC428275	SILVER CREEK 207	AMC428270	ACTIVE
AMC428276	SILVER CREEK 208	AMC428270	ACTIVE
AMC428277	SILVER CREEK 209	AMC428270	ACTIVE

Number of ACTIVE cases: 133

PHOENIX, ARIZONA
BLM CLAIMS OFFICE

FedEx®

Express

RECEIVED
BLM AZ STATE OFFICE

2614 JUL 31 AM 9:31

PHOENIX, ARIZONA

RT 275
ST 3.4
D 6585
07 31

Extremely Urgent

Page 1 of 1

From: (928) 763-8252
Larry Crank
Golden Verlex
2440 Adobe Road
Suite 101
BULLHEAD CITY, AZ 86442

Origin ID: #FPA



Ship Date: 30.JUL.14
ActWgt: 0.5 LB
CAD: 103048271@NET3550

Delivery Address Bar Code



SHIP TO: (602) 417-9255
Mining Claims
Bureau of Land Management
1 N CENTRAL AVE
STE 800
PHOENIX, AZ 85004

BILL SENDER

Ref #
Invoice #
PO #
Dept #

THU - 31 JUL AA
STANDARD OVERNIGHT

TRK# 7707 2423 5859
[0287]



XH ZSYA

85004
AZ US
PHX



3220EDW6A29

After printing this label:

1. Use the "Print" button on this page to print your label to your laser or inkjet printer.
2. Fold the printed page along the horizontal line.
3. Place label in shipping pouch and affix it to your shipment so that the barcode portion of the label can be read and scanned.

Warning: Use only the printed original label for shipping. Using a photocopy of this label for shipping purposes is fraudulent and could result in additional billing charges, along with the cancellation of your FedEx account number.

Use of this system constitutes your agreement to the service conditions in the current FedEx Service Guide, available on fedex.com. FedEx will not be responsible for any claim in excess of \$100 per package, whether the result of loss, damage, delay, non-delivery, misdelivery, or misinformation, unless you declare a higher value, pay an additional charge, document your actual loss and file a timely claim. Limitations found in the current FedEx Service Guide apply. Your right to recover from FedEx for any loss, including intrinsic value of the package, loss of sales, income, interest, profit, attorney's fees, costs, and other forms of damage whether direct, incidental, consequential, or special is limited to the greater of \$100 or the authorized declared value. Recovery cannot exceed actual documented loss. Maximum for items of extraordinary value is \$1,000, e.g. jewelry, precious metals, negotiable instruments and other items listed in our Service Guide. Written claims must be filed within strict time limits, see current FedEx Service Guide.

Insert shipping document here.

United States Department of the Interior
Bureau of Land Management
 LANDS/RECREATION & PLANNING
 ONE N CENTRAL AVE
 PHOENIX, AZ 85004 -2203
 Phone: 602-417-9200



Receipt

No: 3090554

Transaction #: 3181944	
Date of Transaction: 08/01/2014	
CUSTOMER:	
GOLDEN VERTEX CORP 2440 ADOBE RD STE 101 BULLHEAD CITY, AZ 86442-4485 US	

LINE #	QTY	DESCRIPTION	REMARKS	UNIT PRICE	TOTAL
1	1.00	LOCATABLE MINERALS / MINING CLAIMS-NOT NEW-UNADJUD, ONE AUTH NO. ONLY / MINING CLAIM MONEY RECEIVED CASES: AMC407863/\$28365.00	MAINT FEE PYMNT (183) 2015	- n/a -	28365.00
TOTAL:					\$28,365.00

PAYMENT INFORMATION					
1	AMOUNT:	28365.00	POSTMARKED:	08/30/2014	
	TYPE:	CHECK	RECEIVED:	07/31/2014	
	CHECK NO:	4872			
	NAME:	GOLDEN VERTEX CORP 2440 ADOBE RD STE 101 BULLHEAD CITY AZ 86442-4485 US			

REMARKS

This receipt was generated by the automated BLM Collections and Billing System and is a paper representation of a portion of the official electronic record contained therein.

NOTICE!!

These documents have been scanned!

Do not place un-scanned documents beneath this notice!

Do not remove this notice from this file!

GPO Jacket No. 560-102
Print Order 61540
Rise Business Services, LLC
Job=AZ15 6/24/2019



Box Number= AZ15128



Claim Begin-End: AMC427718-AMC427725

5 Miscellaneous



AZ15128-24

AMC427444-AMC427733

**NO
DOCUMENTS
FOUND**

NO DOCUMENTS FOUND
NO DOCUMENTS FOUND

NOTICE!!

These documents have been scanned!

Do not place un-scanned documents beneath this notice!

Do not remove this notice from this file!

GPO Jacket No. 560-102
Print Order 61540
Rise Business Services, LLC
Job=AZ15 6/24/2019



Box Number= AZ15128



Claim Begin-End: AMC427718-AMC427725

6 Location Notices-Amendments and Supporting Documents



AZ15128-24

AMC427444-AMC427733

MINING CLAIM STATUS REPORT

Data Entered: 04/15/14 RAM

MTP Checked By: 04/15/14 RAM
GEO Checked By: 04/15/14 RAM

LEAD SERIAL NUMBER: AMC 427718 thru AMC 427725

NUMBER OF CLAIMS & TYPE:

8 LODE
____ PLACER
____ ASSOCIATION PLACER
____ MILL SITE
____ TUNNEL SITE

CHARGES:

Location Fee @ \$34 = \$ 272
Processing Fee @ \$20 = \$ 160
Maintenance Fee @ \$140 = \$ 1120
Add'l Maint Fee for Assoc Placer = \$ _____
SUBTOTAL \$ _____
Other Fees \$ _____
Other Fees \$ _____
TOTAL \$ 1552.00

TOTAL ACREAGE: _____ Per Claim
(Placer Only)

NUMBER OF LOCATORS: _____

DOCUMENTS RECEIVED VIA: Over-the-Counter [] Mail [] **TIMELY FILED:** Yes [] No []

LEGAL DESCRIPTION: T 20N R 20W SEC 21, 28
T _____ R _____ SEC _____
T _____ R _____ SEC _____
T _____ R _____ SEC _____
T _____ R _____ SEC _____

BLM [] FOREST SERVICE [] _____ SUBJ TO PL 359: Yes [] No []
WILDERNESS AREA [] _____

SPLIT ESTATE: N/A [] SX [] PX [] OTHER [] _____
SRHA [] Was proper Notice filed if located on SHRA Land? Yes [] No []

RECONVEYED MINERALS ON BLM LAND REQUIRE OPENING ORDER FROM 1944 TO 1993:

Open to Entry On _____ N/A []

COMMENTS/STATUS: VOID [] PARTIALLY VOID [] PVT MINERALS [] WITHDRAWN LANDS []
OTHER [] _____

[] Claimant acknowledges that portions of the following claim(s) site(s) may be void or voidable.

Printed Name of Claimant _____ Signature of Claimant _____

*****FINAL ADJUDICATION*****

DATE 7/21/14 INITIALS MT

AM0427718

LCI

La Cuesta International, Inc.

FRANK L. HILMEYER
KINGMAN OFFICE
3349 S. Stallion Drive
Kingman, Arizona 86401

Telephone (928) 757-3660
Fax (928) 757-3665
E-Mail: bhillemeier@frontiernet.net

April 4, 2014

Bureau of Land Management
Arizona State Office
One North Central Avenue, Suite 800
Phoenix, AZ 85004-4427

Re: New Silver Creek 194 through 201 Lode Mining Claims

Dear Bureau of Land Management,

Please find enclosed Certificates of Location and associated maps for the following lode mining claims, Mohave County, Arizona:

Silver Creek 194-201

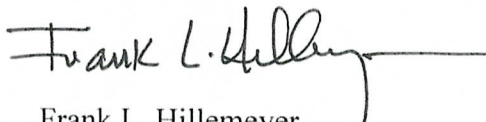
These claims were filed with the Mohave County Recorder's Office on April 3, 2014. The copy of each Location Notice shows the Recorder's document number stamp.

Please find enclosed check number 3880 in the amount of \$1,552.00 (8 X \$194.00) to cover the BLM filing fees for the claims.

Please file and return to: La Cuesta International, Inc.
3349 S. Stallion Drive
Kingman, AZ 86401

Thank you for your assistance. If you have any questions, I can be reached at the telephone numbers as shown above.

Sincerely,



Frank L. Hillemeier
Geologist

AMC427718

RECEIVED
BLM AZ STATE OFFICE
2014 APR - 7 P 3:00
PHOENIX, ARIZONA

FEE# 2014014495

OFFICIAL RECORDS OF MOHAVE COUNTY CAROL MEIER, COUNTY RECORDER



04/03/2014 02:42 PM Fee: \$10.00

PAGE: 1 of 2

LOCATION NOTICE FOR LODE MINING CLAIM

NOTICE IS HEREBY GIVEN that the SILVER CREEK 194 lode mining claim has been located

RET by LA CUESTA INTERNATIONAL, INC. whose current mailing address is 3349 S STALLION DR., KINGMAN, AZ 86401

RECEIVED BLM AZ STATE OFFICE 2014 APR - 7 P 3:00 PHOENIX, ARIZONA BLM Date Stamp

The general course of this claim is EAST - WEST and it is situated in MOHAVE County, Arizona. This claim is 1500 feet in length and 600 feet in width. This claim runs from the location monument on which this location notice is posted approximately 10 feet in a E direction to the E end line and 1490 feet in a W direction to the W end line. This claim is marked by six monuments, one at each corner and one at the center of each end line of the claim.

The location monument on which this notice is posted is situated within Section 28, Township 20N, Range 20 W, Gila Salt River Base and Meridian, Arizona and this claim encompasses portions of the following quarter section (s), section (s), Township (s) and Range (s) NW 1/4 SECTION 28, T20N, R20W, GILA SALT RIVER BASE & MERIDIAN

Gila Salt River Base and Meridian, Arizona.

The locality of this claim with reference to some natural object or permanent monument and additional information (if any) concerning its locality are as follows: THE SE CORNER OF THE CLAIM IS LOCATED 1300 FEET SOUTH AND 2460 FEET EAST OF THE NW CORNER OF SECTION 28, T20N, R20W

DATED AND POSTED on the ground this 13 day of FEBRUARY, 2014.

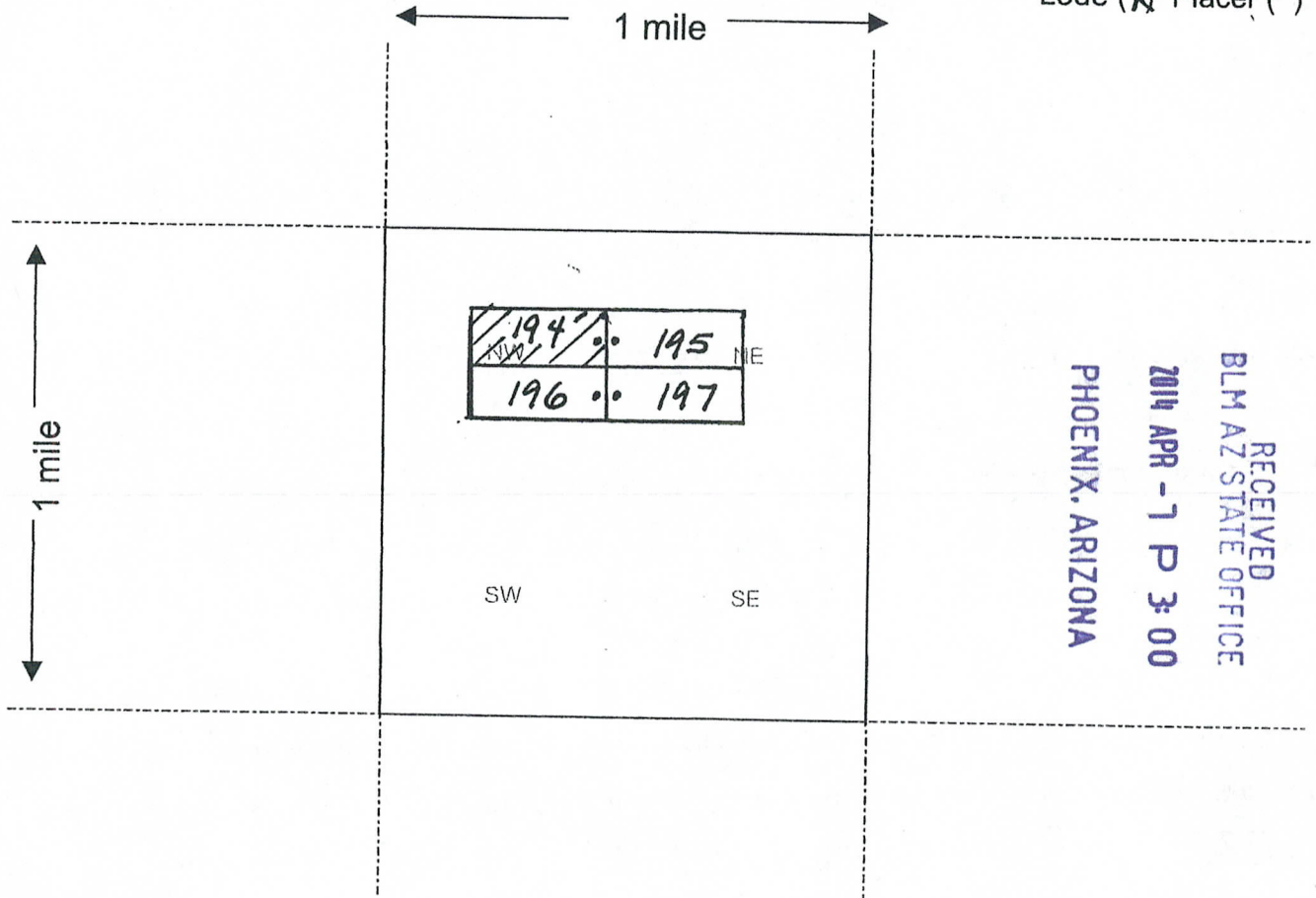
LOCATOR (s) FRANK L. HILDEMEYER - AGENT

AM0427118

Form MCF100 Revised July 2005

MINING CLAIM MAP

Lode (X) Placer ()



RECEIVED
 BLM AZ STATE OFFICE
 2014 APR - 7 P 3:00
 PHOENIX, ARIZONA

AMC427118

Scale : 1" = 2000 feet



1. The above map depicts the SILVER CREEK 194 mining claim, which is located in Section (s) 28, Township 20 N, Range 20 W, Gila and Salt River Base and Meridian, MOHAVE County, Arizona.
2. The type of corner and location monuments used are as follows: 1 1/2" X 1 1/2" WOODEN POST EXTENDING 4 FT. ABOVE THE GROUND
3. The bearings and distances in degrees and feet between claim corners are as depicted on the map.

Form MCF100a
 Revised July 2005

FEE# 2014014496

OFFICIAL RECORDS
OF MOHAVE COUNTY
CAROL MEIER,
COUNTY RECORDER



04/03/2014 02:42 PM Fee: \$10.00

PAGE: 1 of 2

LOCATION NOTICE FOR LODE MINING CLAIM

NOTICE IS HEREBY GIVEN that the SILVER

CREEK 195 lode mining claim has been located

RET by LA CUESTA INTERNATIONAL, INC. whose current mailing
address is 3349 S STALLION DR.,
KINGMAN, AZ 86401

RECEIVED
BLM AZ STATE OFFICE
2014 APR - 7 P 3:00
PHOENIX, ARIZONA
BLM
Date
Stamp

The general course of this claim is EAST - WEST and it is situated in MOHAVE

County, Arizona. This claim is 1500 feet in length and 600 feet in width. This claim runs

from the location monument on which this location notice is posted approximately 10 feet in a

W direction to the W end line and 1490 feet in a E direction to the

E end line. This claim is marked by six monuments, one at each corner and one at the center of each end line of the claim.

The location monument on which this notice is posted is situated within Section 28, Township 20N

20 W, Gila Salt River Base and Meridian, Arizona and this claim encompasses portions

of the following quarter section (s), section (s), Township (s) and Range (s) NE 1/4 + NW 1/4 SECTION 28,

T20N, R20W, GILA SALT RIVER BASE & MERIDIAN

Gila Salt River Base and Meridian, Arizona.

The locality of this claim with reference to some natural object or permanent monument and additional information

(if any) concerning its locality are as follows: THE SE CORNER OF THE CLAIM IS

LOCATED 1300 FEET SOUTH AND 2460 FEET EAST OF THE

NW CORNER OF SECTION 28, T20N, R20W

DATED AND POSTED on the ground this 13 day of FEBRUARY, 2014.

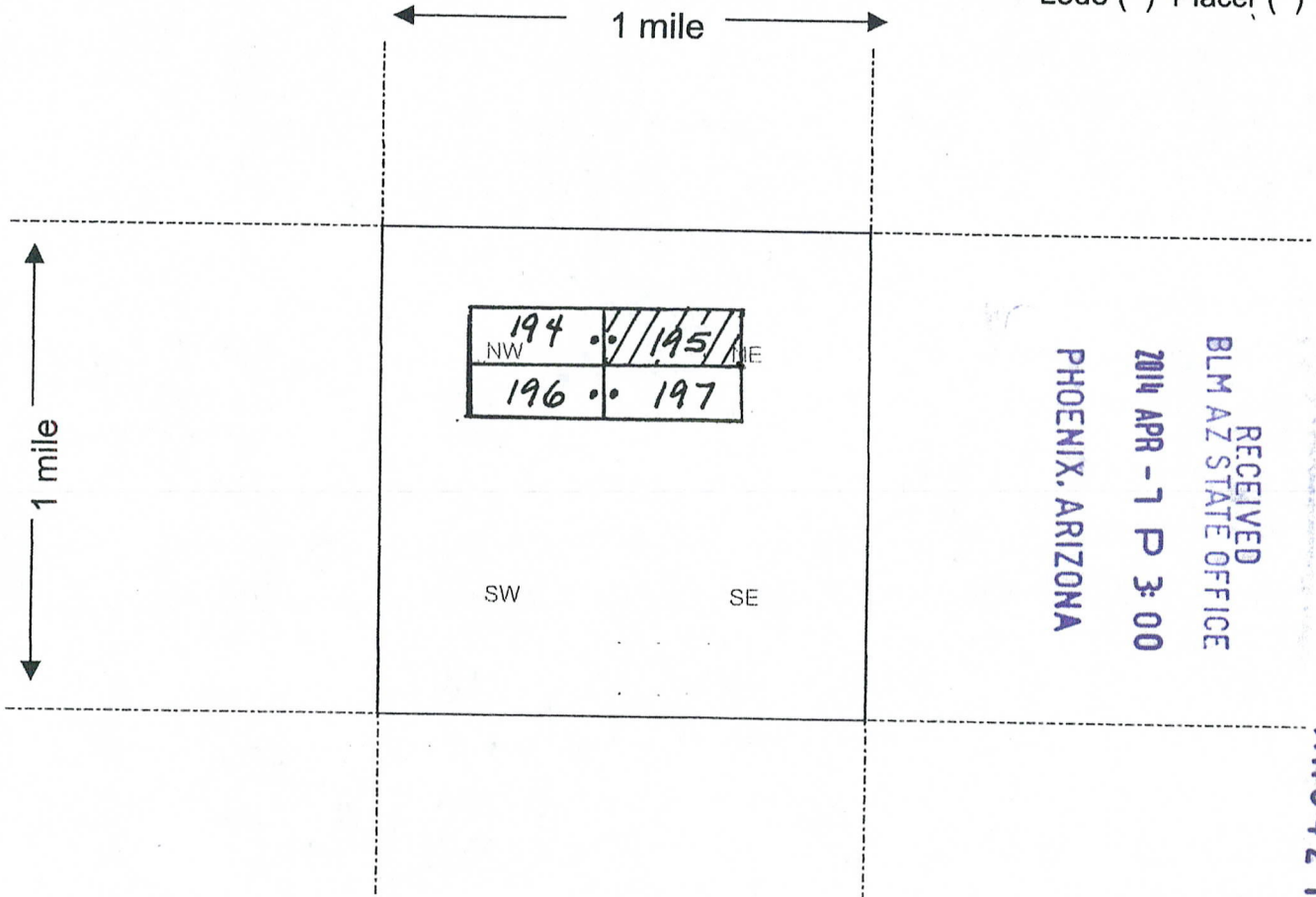
LOCATOR (s) Frank L. Hillmeyer
FRANK L. HILMEYER - AGENT

AMC427719

Form MCF100
Revised July 2005

MINING CLAIM MAP

Lode () Placer ()



RECEIVED
BLM AZ STATE OFFICE
2014 APR - 7 P 3:00
PHOENIX, ARIZONA

AM0427719

Scale : 1" = 2000 feet



- The above map depicts the SILVER CREEK 195 mining claim, which is located in Section (s) 28, Township 20 N, Range 20 W, Gila and Salt River Base and Meridian, MOHAVE County, Arizona.
- The type of corner and location monuments used are as follows: 1 1/2" X 1 1/2" WOODEN POST EXTENDING 4 FT. ABOVE THE GROUND
- The bearings and distances in degrees and feet between claim corners are as depicted on the map.

Form MCF100a
Revised July 2005

This form is available from the Arizona Department of Mines & Mineral Resources and may be reproduced.

2

FEE# 2014014497

OFFICIAL RECORDS OF MOHAVE COUNTY CAROL MEIER, COUNTY RECORDER



04/03/2014 02:42 PM Fee: \$10.00

PAGE: 1 of 2

LOCATION NOTICE FOR LODE MINING CLAIM

NOTICE IS HEREBY GIVEN that the SILVER CREEK 196 lode mining claim has been located by LA CUESTA INTERNATIONAL, INC. whose current mailing address is 3349 S STALLION DR., KINGMAN, AZ 86401

RECEIVED BLM AZ STATE OFFICE 2014 APR -7 P 3:00 PHOENIX, ARIZONA BLM Date Stamp

RET

The general course of this claim is EAST - WEST and it is situated in MOHAVE County, Arizona. This claim is 1500 feet in length and 600 feet in width. This claim runs from the location monument on which this location notice is posted approximately 10 feet in a E direction to the E end line and 1490 feet in a W direction to the W end line. This claim is marked by six monuments, one at each corner and one at the center of each end line of the claim.

The location monument on which this notice is posted is situated within Section 28, Township 20N, Range 20 W, Gila Salt River Base and Meridian, Arizona and this claim encompasses portions of the following quarter section (s), section (s), Township (s) and Range (s) NW 1/4 SECTION 28, T20N, R20W, GILA SALT RIVER BASE, E MERIDIAN Gila Salt River Base and Meridian, Arizona.

The locality of this claim with reference to some natural object or permanent monument and additional information (if any) concerning its locality are as follows: THE NE CORNER OF THE CLAIM IS LOCATED 1300 FEET SOUTH AND 2460 FEET EAST OF THE NW CORNER OF SECTION 28, T20N, R20W

DATED AND POSTED on the ground this 13 day of FEBRUARY, 2014.

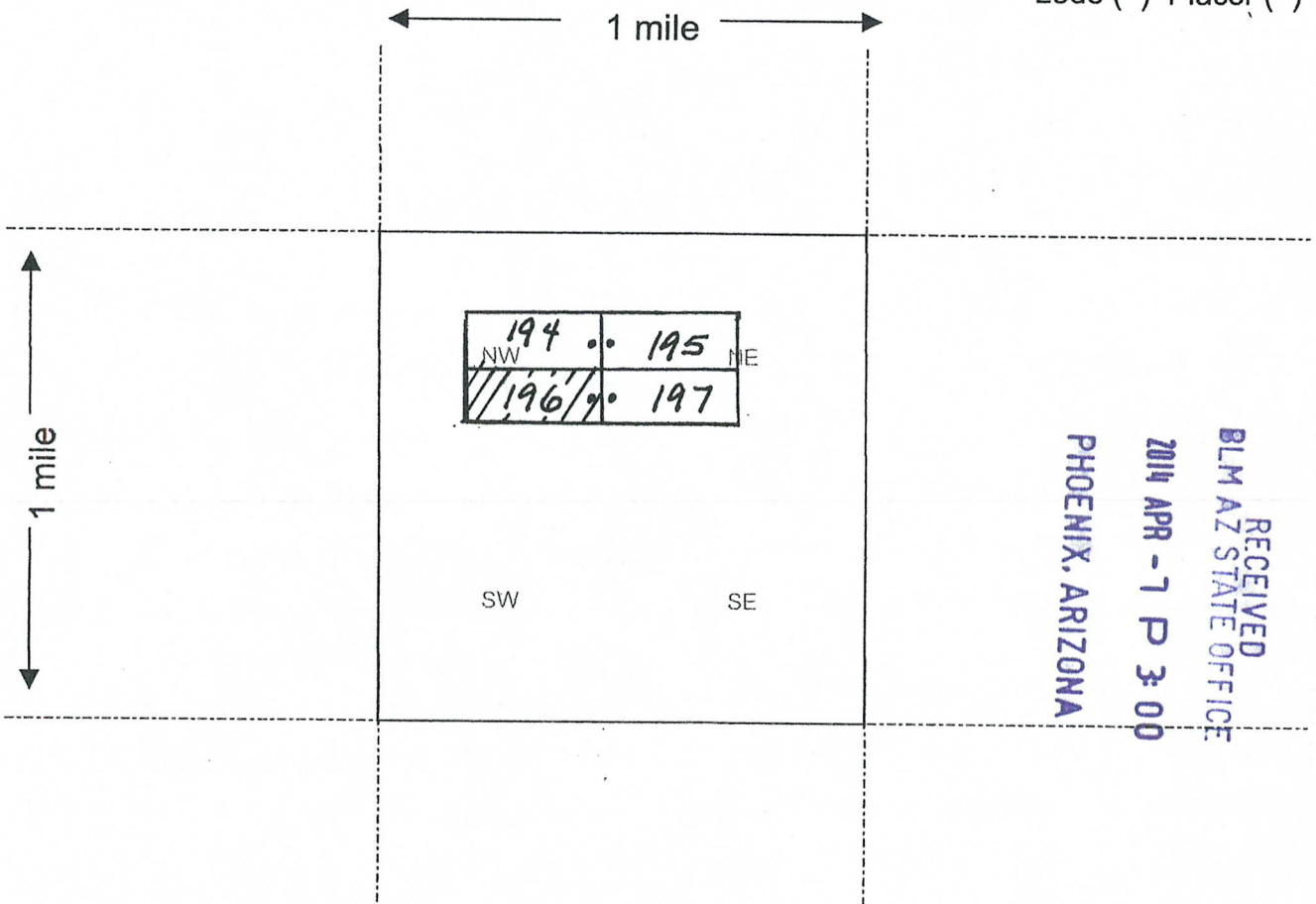
LOCATOR (s) Frank L. Hill FRANK L. HILLEMAYER - AGENT

AMC427720

Form MCF100 Revised July 2005

MINING CLAIM MAP

Lode () Placer ()



RECEIVED
 BLM AZ STATE OFFICE
 2014 APR - 7 P 3:00
 PHOENIX, ARIZONA

Scale: 1" = 2000 feet



1. The above map depicts the SILVER CREEK 196 mining claim, which is located in Section (s) 28, Township 20 N, Range 20 W, Gila and Salt River Base and Meridian, MOHAVE County, Arizona.

2. The type of corner and location monuments used are as follows: 1 1/2" X 1 1/2" WOODEN POST EXTENDING 4 FT. ABOVE THE GROUND

3. The bearings and distances in degrees and feet between claim corners are as depicted on the map.

Form MCF100a
 Revised July 2005

This form is available from the Arizona Department of Mines & Mineral Resources and may be reproduced.

AMC427720

2

FEE# 2014014498

OFFICIAL RECORDS OF MOHAVE COUNTY CAROL MEIER, COUNTY RECORDER



04/03/2014 02:42 PM Fee: \$10.00

PAGE: 1 of 2

LOCATION NOTICE FOR LODE MINING CLAIM

NOTICE IS HEREBY GIVEN that the SILVER CREEK 197 lode mining claim has been located by LA CUESTA INTERNATIONAL, INC. whose current mailing address is 3349 S STALLION DR., KINGMAN, AZ 86401

RET

RECEIVED BLM AZ STATE OFFICE 2014 APR - 7 P 3:01 PHOENIX, ARIZONA BLM Date Stamp

The general course of this claim is EAST - WEST and it is situated in MOHAVE County, Arizona. This claim is 1500 feet in length and 600 feet in width. This claim runs from the location monument on which this location notice is posted approximately 10 feet in a W direction to the W end line and 1490 feet in a E direction to the E end line. This claim is marked by six monuments, one at each corner and one at the center of each end line of the claim.

The location monument on which this notice is posted is situated within Section 28, Township 20N, Range 20 W, Gila Salt River Base and Meridian, Arizona and this claim encompasses portions of the following quarter section (s), section (s), Township (s) and Range (s) NE 1/4 + NW 1/4 SECTION 28, T20N, R20W, GILA SALT RIVER BASE & MERIDIAN Gila Salt River Base and Meridian, Arizona.

The locality of this claim with reference to some natural object or permanent monument and additional information (if any) concerning its locality are as follows: THE NW CORNER OF THE CLAIM IS LOCATED 1300 FEET SOUTH AND 2460 FEET EAST OF THE NW CORNER OF SECTION 28, T20N, R20W

DATED AND POSTED on the ground this 13 day of FEBRUARY, 2014.

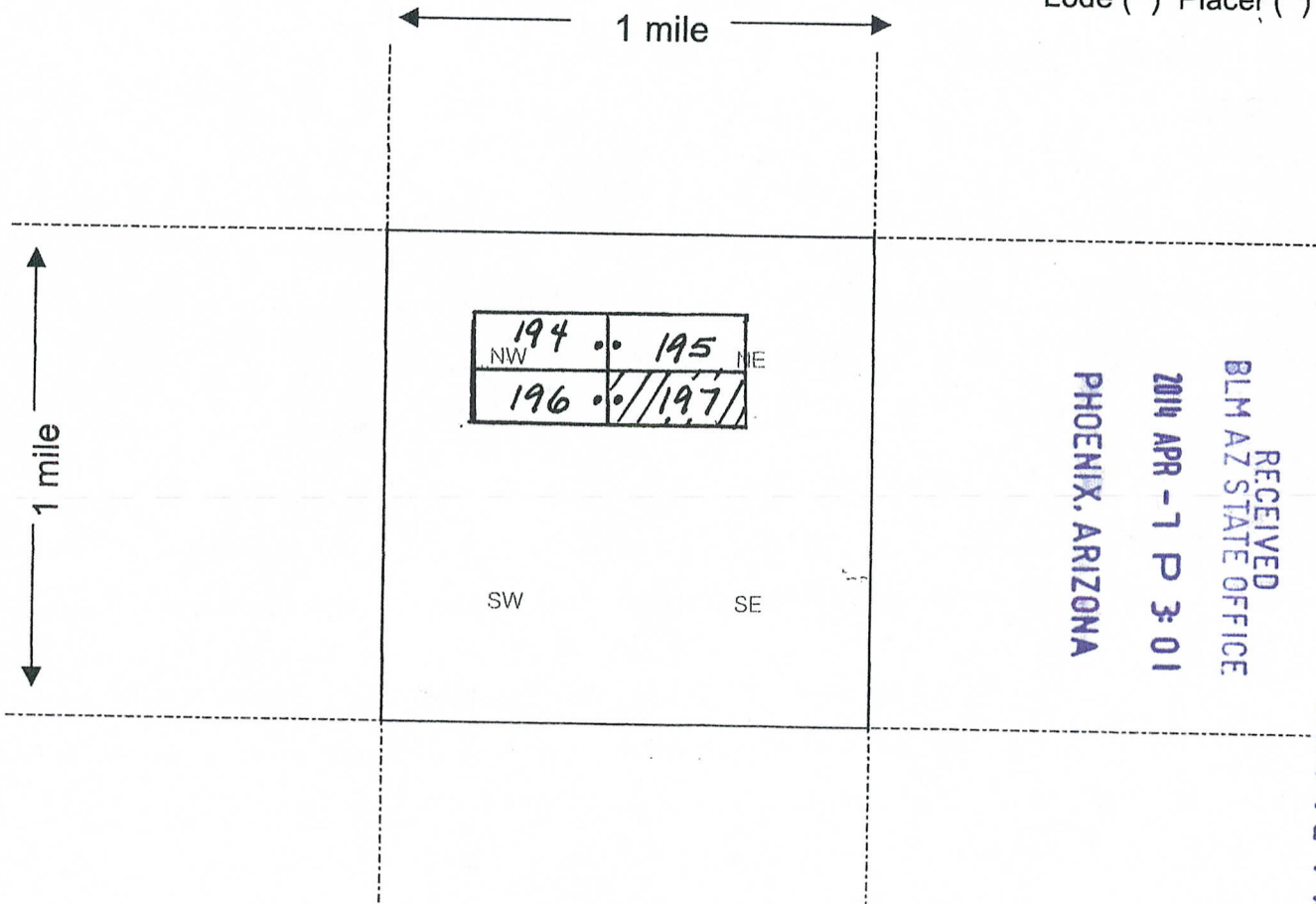
LOCATOR (s) FRANK L. HILLEMAYER - AGENT

AM0427721

Form MCF100 Revised July 2005

MINING CLAIM MAP

Lode () Placer ()



RECEIVED
 BLM AZ STATE OFFICE
 2014 APR - 7 P 3:01
 PHOENIX, ARIZONA

AM04277211

1. The above map depicts the SILVER CREEK 197 mining claim, which is located in Section (s) 28, Township 20 N, Range 20 W, Gila and Salt River Base and Meridian, MOHAVE County, Arizona.
2. The type of corner and location monuments used are as follows: 1 1/2" X 1 1/2" WOODEN POST EXTENDING 4 FT. ABOVE THE GROUND
3. The bearings and distances in degrees and feet between claim corners are as depicted on the map.

Form MCF100a
 Revised July 2005

FEE# 2014014499

OFFICIAL RECORDS OF MOHAVE COUNTY CAROL MEIER, COUNTY RECORDER



04/03/2014 02:42 PM Fee: \$10.00

PAGE: 1 of 2

LOCATION NOTICE FOR LODE MINING CLAIM

NOTICE IS HEREBY GIVEN that the SILVER

CREEK 198 lode mining claim has been located

RET by LA CUESTA INTERNATIONAL, INC. whose current mailing address is 3349 S STALLION DR., KINGMAN, AZ 86401

RECEIVED
BLM AZ STATE OFFICE
2014 APR - 7 P 3:01
PHOENIX, ARIZONA
BLM
Date
Stamp

The general course of this claim is NORTH-SOUTH and it is situated in MOHAVE County, Arizona. This claim is 1500 feet in length and 600 feet in width. This claim runs

from the location monument on which this location notice is posted approximately 10 feet in a S direction to the S end line and 1490 feet in a N direction to the N end line. This claim is marked by six monuments, one at each corner and one at the center of each end line of the claim.

The location monument on which this notice is posted is situated within Section 21, Township 20 N, Range 20 W, Gila Salt River Base and Meridian, Arizona and this claim encompasses portions of the following quarter section (s), section (s), Township (s) and Range (s) NW 1/4 SECTION 21, T20N, R20W, GILA SALT RIVER BASE & MERIDIAN.

Gila Salt River Base and Meridian, Arizona.
The locality of this claim with reference to some natural object or permanent monument and additional information (if any) concerning its locality are as follows:

THE SE CORNER OF THE CLAIM IS LOCATED 2,723 FEET SOUTH AND 1,411 FEET EAST OF THE NW CORNER OF SECTION 21, T20N, R20W

DATED AND POSTED on the ground this 13 day of FEBRUARY, 2014.

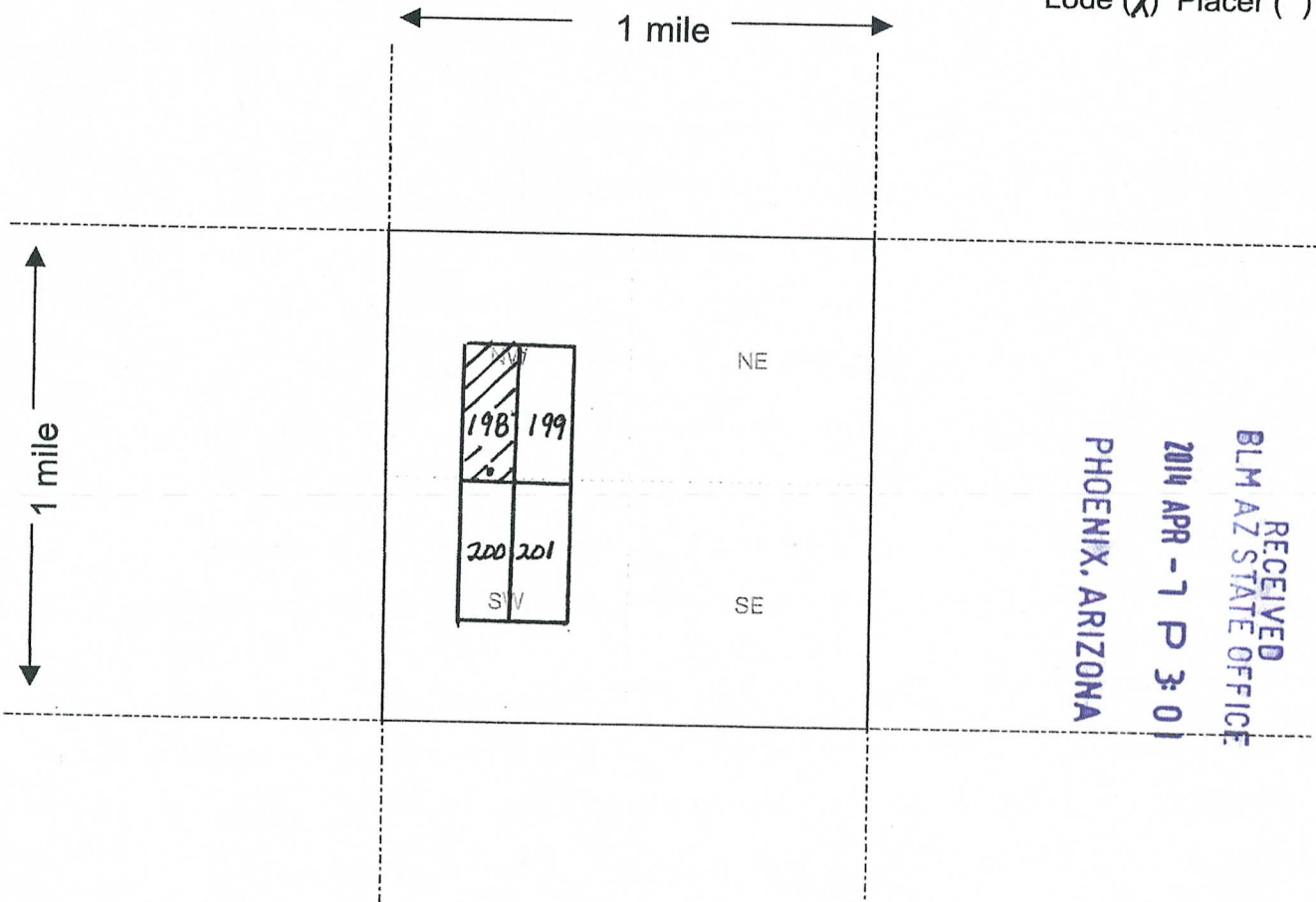
LOCATOR (s) Frank L. Hillemeyer
FRANK L. HILLEMAYER - AGENT

Form MCF100
Revised July 2005

ANC427122

MINING CLAIM MAP

Lode (X) Placer ()



RECEIVED
BLM AZ STATE OFFICE
2014 APR - 1 P 3: 01
PHOENIX, ARIZONA

AM04217221

Scale : 1" = 2000 feet



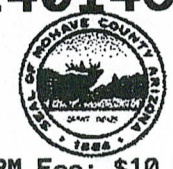
1. The above map depicts the SILVER CREEK 198 mining claim, which is located in Section (s) 21, Township 20 N, Range 20 W, Gila and Salt River Base and Meridian, MOHAVE County, Arizona.
2. The type of corner and location monuments used are as follows: 1 1/2" X 1 1/2" WOODEN POSTS EXTENDING 4 FEET ABOVE THE GROUND.
3. The bearings and distances in degrees and feet between claim corners are as depicted on the map.

Form MCF100a
Revised July 2005

2

FEE# 2014014500

OFFICIAL RECORDS OF MOHAVE COUNTY CAROL MEIER, COUNTY RECORDER



04/03/2014 02:42 PM Fee: \$10.00

PAGE: 1 of 2

LOCATION NOTICE FOR LODE MINING CLAIM

NOTICE IS HEREBY GIVEN that the SILVER CREEK 199 lode mining claim has been located by LA CUESTA INTERNATIONAL, INC. whose current mailing address is 3349 S STALLION DR., KINGMAN, AZ 86401

RET

RECEIVED BLM AZ STATE OFFICE 2014 APR - 7 P 3:01 PHOENIX, ARIZONA

The general course of this claim is NORTH-SOUTH and it is situated in MOHAVE County, Arizona. This claim is 1500 feet in length and 600 feet in width. This claim runs from the location monument on which this location notice is posted approximately 10 feet in a S direction to the S end line and 1490 feet in a N direction to the N end line. This claim is marked by six monuments, one at each corner and one at the center of each end line of the claim.

The location monument on which this notice is posted is situated within Section 21, Township 20 N, Range 20 W, Gila Salt River Base and Meridian, Arizona and this claim encompasses portions of the following quarter section (s), section (s), Township (s) and Range (s) NW 1/4 SECTION 21, T20N, R20W, GILA SALT RIVER BASE & MERIDIAN.

Gila Salt River Base and Meridian, Arizona. The locality of this claim with reference to some natural object or permanent monument and additional information (if any) concerning its locality are as follows: THE SW CORNER OF THE CLAIM IS LOCATED 2,723 FEET SOUTH AND 1,411 FEET EAST OF THE NW CORNER OF SECTION 21, T20N, R20W

DATED AND POSTED on the ground this 13 day of FEBRUARY, 2014.

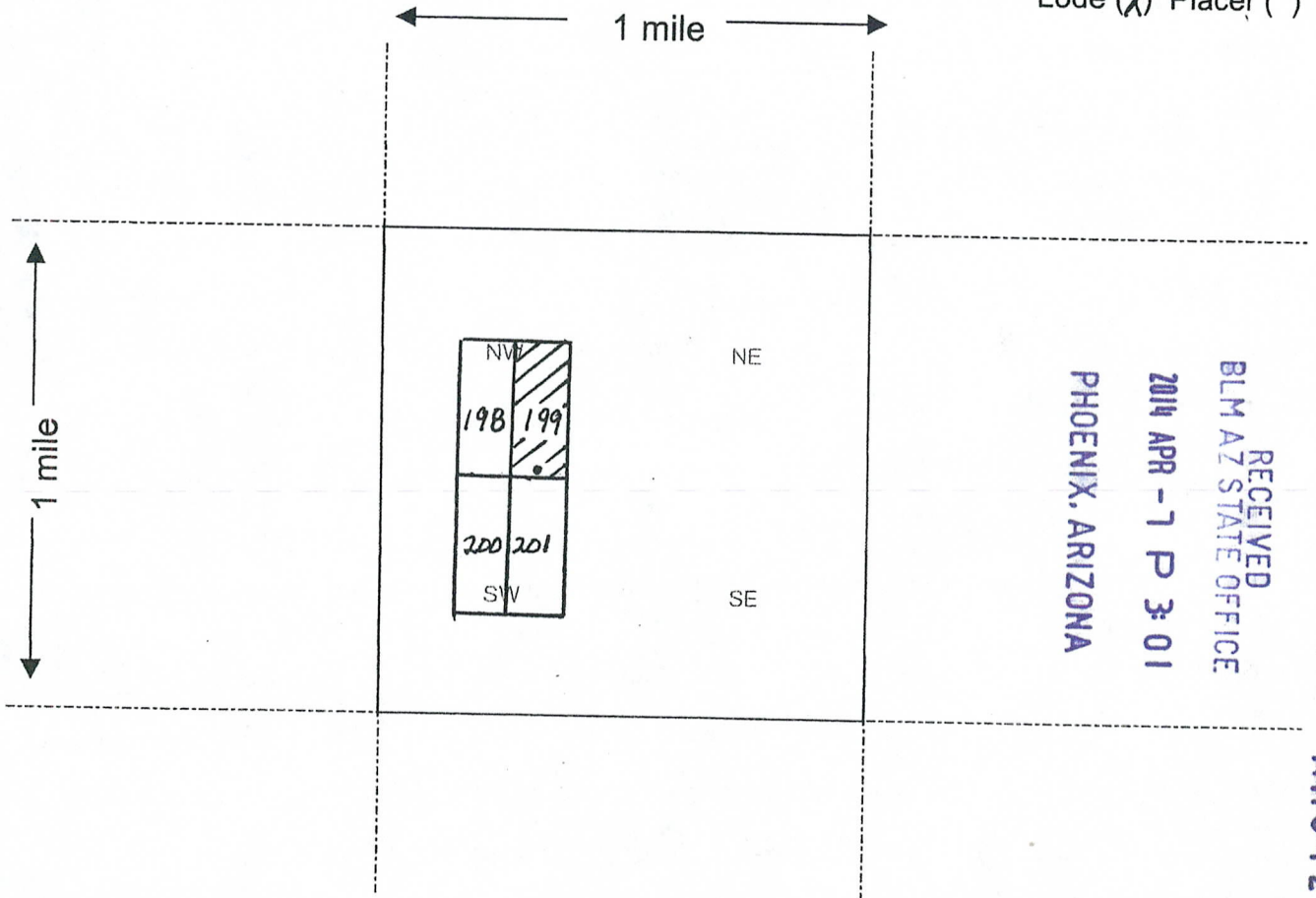
LOCATOR (s) FRANK L. HILLEMEYER - AGENT

Form MCF100 Revised July 2005

AMC427123

MINING CLAIM MAP

Lode (X) Placer ()



RECEIVED
 BLM AZ STATE OFFICE
 2014 APR - 7 P 3:01
 PHOENIX, ARIZONA

AMC427723

Scale : 1" = 2000 feet



- The above map depicts the SILVER CREEK 199 mining claim, which is located in Section (s) 21, Township 20 N, Range 20 W, Gila and Salt River Base and Meridian, MOHAVE County, Arizona.
- The type of corner and location monuments used are as follows: 1 1/2" X 1 1/2" WOODEN POSTS EXTENDING 4 FEET ABOVE THE GROUND.
- The bearings and distances in degrees and feet between claim corners are as depicted on the map.

Form MCF100a
 Revised July 2005

FEE# 2014014501

OFFICIAL RECORDS
OF MOHAVE COUNTY
CAROL MEIER,
COUNTY RECORDER



04/03/2014 02:42 PM Fee: \$10.00

PAGE: 1 of 2

LOCATION NOTICE FOR LODE MINING CLAIM

NOTICE IS HEREBY GIVEN that the SILVER
CREEK 200 lode mining claim has been located
by LA CUESTA INTERNATIONAL, INC. whose current mailing
address is 3349 S STALLION DR.,
KINGMAN, AZ 86401

BLM
Date
Stamp

RECEIVED
BLM AZ STATE OFFICE
2014 APR - 7 P 3:01
PHOENIX, ARIZONA

RET

The general course of this claim is NORTH-SOUTH and it is situated in MOHAVE
County, Arizona. This claim is 1500 feet in length and 600 feet in width. This claim runs
from the location monument on which this location notice is posted approximately 10 feet in a
N direction to the N end line and 1490 feet in a S direction to the
S end line. This claim is marked by six monuments, one at each corner and one at the center of each
end line of the claim.

The location monument on which this notice is posted is situated within Section 21, Township 20
N, Range 20 W, Gila Salt River Base and Meridian, Arizona and this claim encompasses portions
of the following quarter section (s), section (s), Township (s) and Range (s) SW 1/4 SECTION 21,
T20N, R20W, GILA SALT RIVER BASE & MERIDIAN.
Gila Salt River Base and Meridian, Arizona.

The locality of this claim with reference to some natural object or permanent monument and additional information
(if any) concerning its locality are as follows: THE NE CORNER OF THE CLAIM IS

LOCATED 2,723 FEET SOUTH AND 1,411 FEET EAST OF
THE NW CORNER OF SECTION 21, T20N, R20W

DATED AND POSTED on the ground this 13 day of FEBRUARY, 2014.

LOCATOR (s) Frank L. Hillmeyer

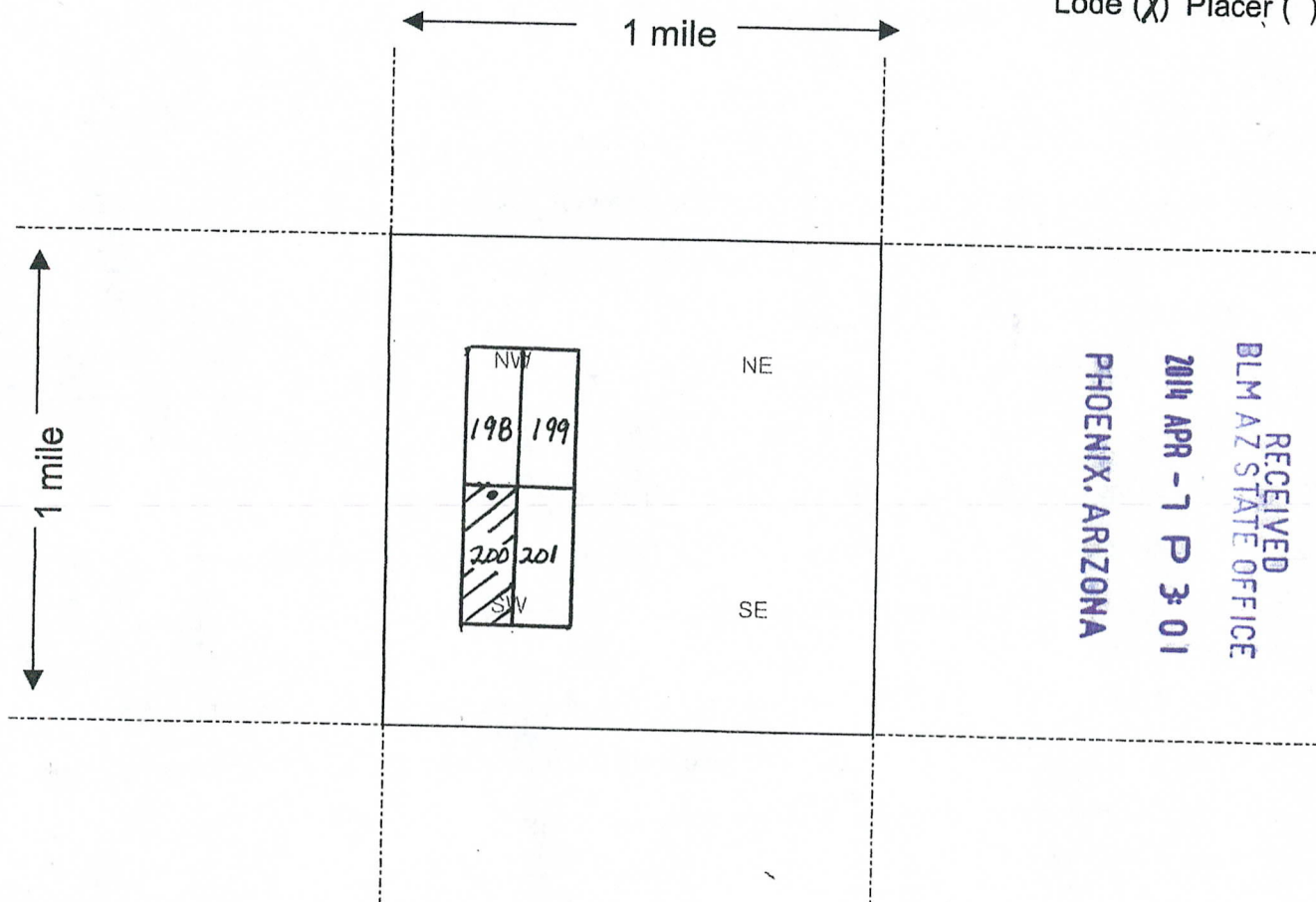
FRANK L. HILMEYER - AGENT

Form MCF100
Revised July 2005

AMC427724

MINING CLAIM MAP

Lode (X) Placer ()



RECEIVED
BLM AZ STATE OFFICE
2014 APR - 7 P 3:01
PHOENIX, ARIZONA

AMC427724

Scale: 1" = 2000 feet



- The above map depicts the SILVER CREEK 200 mining claim, which is located in Section (s) 21, Township 20 N, Range 20 W, Gila and Salt River Base and Meridian, MOHAVE County, Arizona.
- The type of corner and location monuments used are as follows: 1 1/2" X 1 1/2" WOODEN POSTS EXTENDING 4 FEET ABOVE THE GROUND.
- The bearings and distances in degrees and feet between claim corners are as depicted on the map.

Form MCF100a
Revised July 2005

2

FEE# 2014014502

OFFICIAL RECORDS OF MOHAVE COUNTY CAROL MEIER, COUNTY RECORDER



04/03/2014 02:42 PM Fee: \$10.00

PAGE: 1 of 2

LOCATION NOTICE FOR LODE MINING CLAIM

NOTICE IS HEREBY GIVEN that the SILVER CREEK 201 lode mining claim has been located

RET: by LA CUESTA INTERNATIONAL, INC. whose current mailing address is 3349 S STALLION DR., KINGMAN, AZ 86401

RECEIVED BLM AZ STATE OFFICE PHOENIX, ARIZONA 2014 APR -7 P 3:01 BLM Date Stamp

The general course of this claim is NORTH-SOUTH and it is situated in MOHAVE County, Arizona. This claim is 1500 feet in length and 600 feet in width. This claim runs from the location monument on which this location notice is posted approximately 10 feet in a N direction to the N end line and 1490 feet in a S direction to the S end line. This claim is marked by six monuments, one at each corner and one at the center of each end line of the claim.

The location monument on which this notice is posted is situated within Section 21, Township 20 N, Range 20 W, Gila Salt River Base and Meridian, Arizona and this claim encompasses portions of the following quarter section (s), section (s), Township (s) and Range (s) SW 1/4 SECTION 21, T20N, R20W, GILA SALT RIVER BASE & MERIDIAN.

Gila Salt River Base and Meridian, Arizona. The locality of this claim with reference to some natural object or permanent monument and additional information (if any) concerning its locality are as follows: THE NW CORNER OF THE CLAIM IS LOCATED 2,723 FEET SOUTH AND 1,411 FEET EAST OF THE NW CORNER OF SECTION 21, T20N, R20W

DATED AND POSTED on the ground this 13 day of FEBRUARY, 2014.

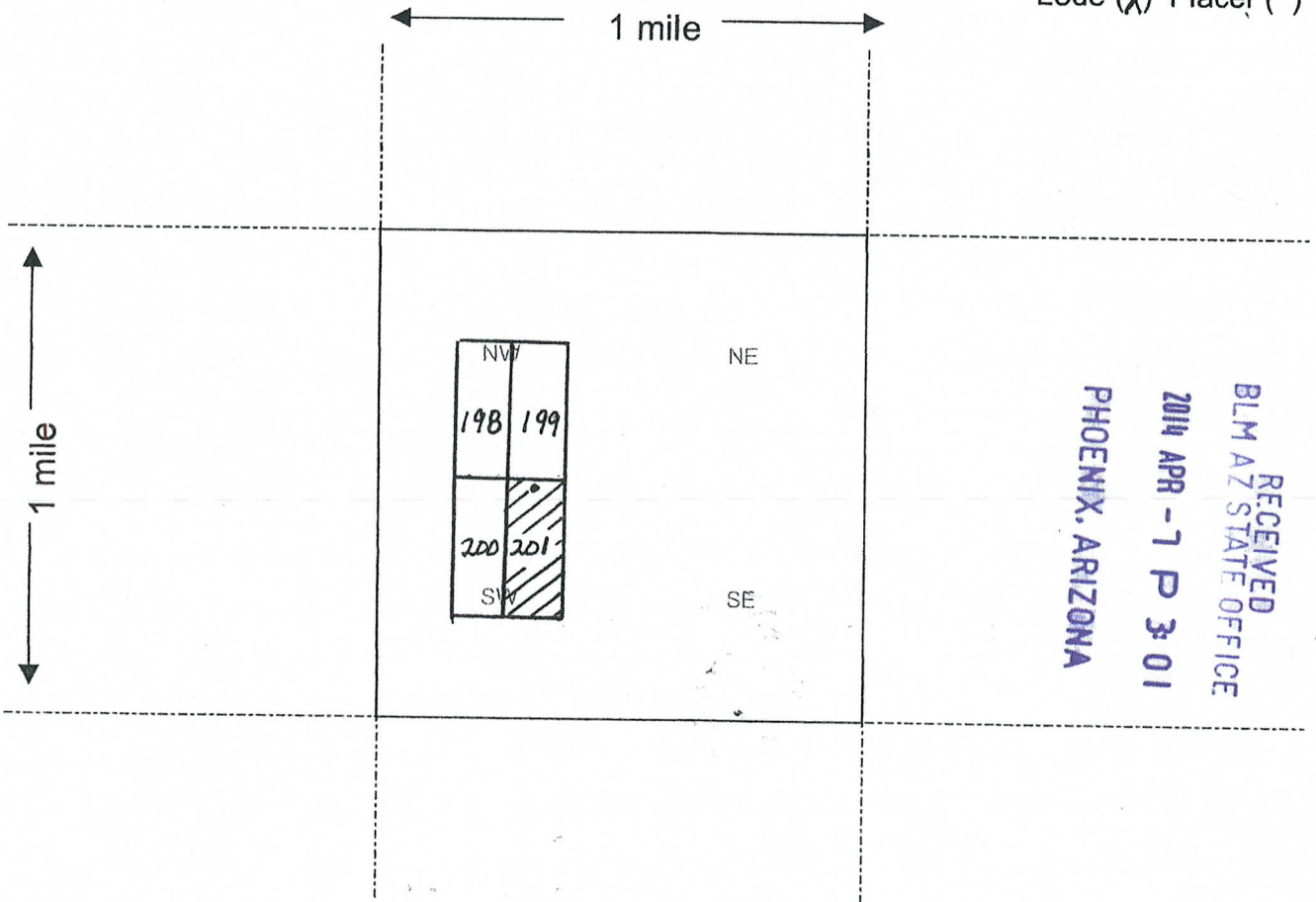
LOCATOR (s) Frank L. Hullemeyer FRANK L. HULLEMEYER - AGENT

Form MCF100 Revised July 2005

AMC427725

MINING CLAIM MAP

Lode (X) Placer ()



RECEIVED
BLM AZ STATE OFFICE
2014 APR - 7 P 3:01
PHOENIX, ARIZONA

AM0427725

Scale: 1" = 2000 feet



- The above map depicts the SILVER CREEK 201 mining claim, which is located in Section (s) 21, Township 20 N, Range 20 W, Gila and Salt River Base and Meridian, MOHAVE County, Arizona.
- The type of corner and location monuments used are as follows: 1 1/2" X 1 1/2" WOODEN POSTS EXTENDING 4 FEET ABOVE THE GROUND.
- The bearings and distances in degrees and feet between claim corners are as depicted on the map.

Form MCF100a
Revised July 2005

This form is available from the Arizona Department of Mines & Mineral Resources and may be reproduced.

Input Parameters for Geographic Report with Land

System Id = CR

Admin State = AZ

Geo State = AZ

Casetype Begins With

Case Disp Txt = AUTHORIZED, CANCELLED, EXPIRED, PENDING, REJECTED, RELINQUISHED, WITHDRAWN

Mer Twp Rng =

Section =

Mtrs = 14 0200N 0200W 021, 14 0200N 0200W 028, 14 0200N 0200W 999

Commodity =

Commodity Txt =

Pending Org =

Pend Org Decode =

Total Rows Returned: 5

RUN TIME: 01:12 PM

UNITED STATES DEPARTMENT OF INTERIOR
BUREAU OF LAND MANAGEMENT
GEOGRAPHIC REPORT WITH LAND
Sorted by Serial Number

RUN DATE: 04/15/2014
Page 1 of 1

Adm State: AZ

Serial Number: AZA 025482
Total Case Acres: 27,660.000

<u>Casetype</u>	<u>Case Disp</u>	14	0200N	0200W	<u>Sect</u>	<u>Sur Typ</u>	<u>Sur Num</u>	<u>Suff</u>	<u>Subdivision</u>	<u>Act Pend</u>
231106	AUTHORIZED				021	LOTS			5,11;	
					028	LOTS			11,12;	

Serial Number: AZA 033484
Total Case Acres: 1.000

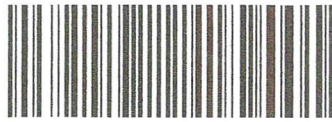
<u>Casetype</u>	<u>Case Disp</u>	14	0200N	0200W	<u>Sect</u>	<u>Sur Typ</u>	<u>Sur Num</u>	<u>Suff</u>	<u>Subdivision</u>	<u>Act Pend</u>
293200	AUTHORIZED				028	ALIQ			S2NE,SENW,SE;	

Serial Number: AZA 035875
Total Case Acres: 1.000

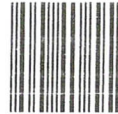
<u>Casetype</u>	<u>Case Disp</u>	14	0200N	0200W	<u>Sect</u>	<u>Sur Typ</u>	<u>Sur Num</u>	<u>Suff</u>	<u>Subdivision</u>	<u>Act Pend</u>
380913	AUTHORIZED				021	ALIQ			N2;	
					028	ALIQ			S2;	

La Cuesta International, Inc.
3349 S. Stallion Drive
Kingman, AZ 86401

RECEIVED
BLM AZ STATE OFFICE
2014 APR -1 P 3:00
PHOENIX, ARIZONA



7013 2250 0001 1928 4780



1000

85004

U.S. POSTAGE
PAID
KINGMAN, AZ
86401
APR 04, 14
AMOUNT

\$4.42

00069017-05

BUREAU OF LAND MANAGEMENT
AZ STATE OFFICE RE: MINING CLAIMS
ONE NORTH CENTRAL, SUITE 800
PHOENIX, AZ 85004-4427